

2019 Larimer County Fair

5280 Arena Circle, Ste #101

Loveland, CO 80538

Fairgrounds Main Office - (970) 619-4000 FAX 619-4001

Fair Extension Entry Office - (970) 619-4080 (July 10 – August 9) FAX – 970-619-4085

INDEX

2019 County Fair Schedule

General Information.....	1
Exhibitor General Rules & Regulations.....	2
4-H Rules & Regulations	4
4-H Livestock Division Rules.....	5
County Fair Health Regulations.....	8

4-H Livestock / Animal Division

Department D - Horses	30
-----------------------------	----

Code of Conduct & Dress Code.....	157
-----------------------------------	-----

IAFE Code of Show Ring Ethics	158
-------------------------------------	-----

Entry Forms

4-H Horse Entry Form	
----------------------	--

2019 Larimer County Fair Schedule of Events

SCHEDULE as of May 21, 2019 ---- SCHEDULE SUBJECT TO CHANGE

WEDNESDAY, JULY 10

8:00 a.m. - 5:00 p.m. Fair Extension Office Opens,
McKee Building, The Ranch

THURSDAY, JULY 11

8:00 a.m. - 5:00 p.m. Fair Extension Office Open,
McKee Building, The Ranch

FRIDAY, JULY 12

8:00 A.M. - 5:00 p.m. Fair Extension Office Open,
McKee Building, The Ranch

MONDAY, JULY 15

8:00 a.m. - 6:00 p.m. 4-H & OPEN CLASS EXHIBIT
ENTRY/PRE-REGISTRATION
FORM SUBMISSION DEADLINE-
Fairgrounds Extension Office,
McKee Building, The Ranch

By 6:00 p.m. Musical Freestyle Riding Pattern and
Music Submitted to Fairgrounds
Extension Office, *McKee Building,
The Ranch*

THURSDAY, JULY 18

5:00 p.m. - 6:30 p.m. 4-H Cat Show Set Up *4-H BLDG*

FRIDAY, JULY 19

8:00 a.m. - 9:00 a.m. 4-H Cat Show Check-In *4-H BLDG*
9:00 a.m. 4-H Cat Show *4-H BLDG*
1:00 p.m. - 4:00 p.m. Dog Show Set-Up *NEXH*
5:00 p.m. Dress-A-Pup *NEXH*
5:00 p.m. **All Horse Entries Close**

SATURDAY, JULY 20

1:00 p.m. - 2:00 p.m. 4-H Dog Showmanship & Advanced,
Excellent & Advanced/Excellent
Rally Check-In *SEXH*
2:30 p.m. 4-H Dog Showmanship & Advanced,
Excellent & Advanced/Excellent
Rally Show
SEXH

SUNDAY, JULY 21

8:00 a.m. - 9:30 a.m. 4-H Dog Obedience & Novice &
Intermediate Rally Check-In *SEXH*
10:00 a.m. 4-H Dog Obedience & Novice &
Intermediate Rally Show
SEXH

WEDNESDAY, JULY 24

7:30 a.m. **Sign up for Interview Judging
Open until 12:00 noon Monday
July 29 - Online**
9:00 a.m. 4-H Fashion Revue Judging,
4-H BLDG
5:00 p.m. All 4-H Entries Close (No entries
accepted beyond this point)
7:00 p.m. Public Fashion Revue,
4-H BLDG, Exhibit Hall

THURSDAY, JULY 25

4:00 p.m. Premier Exhibitor Testing
4-H BLDG
4:00 p.m. Supreme Beef Interviews
4-H BLDG
4:00 p.m. Dairy Goat Knowledge Bowl Contest
4-H BLDG
7:00 p.m. Livestock Superintendent Meeting,
RSA

FRIDAY, JULY 26

6:00 p.m. - 8:00 p.m. 4-H Horse Stall Set Up (No Horses)
WPAV

SATURDAY, JULY 27

9:30 a.m. LARIMER COUNTY FAIR
PARADE *Downtown Loveland*
6:00 p.m. - 8:00 p.m. **Session One & Whole Fair Camper
Check-In**
4:00 p.m. - 6:00 p.m. **Horse Check-In ALL Horses
Vet Check WPAV**
5:00 p.m. - 8:30 p.m. **Mac Equipment Indoor Arena &
Round Up Outdoor Arena - Open
Barn Closes WPAV**

SUNDAY, JULY 28

6:00 a.m. Barn Opens *WPAV*
7:30 a.m. - 9:00 a.m. Indoor & Outdoor Arenas Open
8:00 a.m. Model Rocketry Fly Day
Field East of Parking Lot A
8:00 a.m. - 12:00 Noon **Session One & Whole Fair Camper
Check-In**
10:00 a.m. - 6:00 p.m. 4-H Horse Show English Classes
INA & BEC
4:00 p.m. - 6:00 p.m. Barn Access Feeding Time *WPAV*
6:00 p.m. - 8:00 p.m. English Horse Check-Out *WPAV*
9:00 p.m. Barn Closes *WPAV*
4:00 p.m. - 6:00 p.m. Dairy /Pygmy Goat Barn Set Up
EPAV

MONDAY, JULY 29

6:00 a.m. Barn Opens *WPAV*
6:00 a.m. - 7:00 a.m. Indoor & Outdoor Arenas Open
6:00 a.m. - 8:00 a.m. Barn Access Feeding Time *WPAV*
8:00 a.m. - 4:00 p.m. 4-H Horse Show Western Classes
INA & BEC
4:00 p.m. - 6:00 p.m. Barn Access Feed Time *WPAV*
4:00 p.m. - 7:00 p.m. Interview Judging Set Up
4-H BLDG
4:00 p.m. - 7:00 p.m. Open Class Exhibit Set Up
SEXH
4:00 p.m. - 7:00 p.m. **Dairy/Pygmy Goat Check-In & Vet
Check EPAV**
6:00 p.m. Musical Freestyle *INA*
9:00 p.m. **Barns Close WPAV**

BEC Budweiser Events Center

INA Mac Equipment Indoor Arena

EPAV Mac Equipment Livestock Pavilion - East

SEXH First National Bank Exhibition Hall - South *WPAV* Mac Equipment Livestock Pavilion - West *RUAO* Round Up Outdoor Arena

NEXH First National Bank Exhibition Hall - North *LHOA* Long Horn Outdoor Arena *RSA* Ranch Small Arena

4-H BLDG McKee 4-H & Community Bldg.

2019 Larimer County Fair Schedule of Events

SCHEDULE as of May 21, 2019 ---- SCHEDULE SUBJECT TO CHANGE

TUESDAY, JULY 30

6:00 a.m. Barns Open WPAV
 6:00 a.m. – 8:00 a.m. Barn Access Feeding Time WPAV
 7:30 a.m. Walk Through Trail Course BEC
 8:00 a.m. – 2:00 p.m. 4-H Horse Show Western Classes
 INA & BEC
 8:00 a.m. – 11:30 a.m. 4-H Horse Western Trail BEC
 8:30 a.m. - 10:00 a.m. 4-H General & Family Projects not
 being interviewed - Check-In
 4-H BLDG
 9:00 a.m. - 5:30 p.m. 4-H General Projects - Interview
 Judging – by appointment
 4-H BLDG
 9:00 a.m. - 5:00 p.m. 4-H Consumer & Family Projects -
 Interview Judging - by appointment
 4-H BLDG
 10:00 a.m. - 4:00 p.m. Cloverbud & Special 4-H Displays
 Check-In 4-H BLDG
1:00 p.m. – 2:00 p.m. Dairy Goat Entry Check & Clipper
Decontamination EPAV
 2:00 – 4:00 p.m. Dairy Goat Fitting & Judging
 Contests RSA
 2:00 p.m. – 8:00 p.m. Horse Check-Out WPAV
 2:00 p.m. – 8:30 p.m. 4-H Ranch Horse Classes
 INA & BEC
 4:00 p.m. – 6:00 p.m. Market Goat Barn Set Up EPAV
 4:00 p.m. – 6:00 p.m. Barn Access Feeding Time WPAV
 5:00 p.m. - 8:00 p.m. Open Class Home Economics, Fine
 Arts, Photography & Creative Crafts
 Exhibits - Check-In SEXH
 6:00 p.m. Milk Does & Weigh In by 6:00 p.m.
 EPAV
 9:00 p.m. Barn Closes WPAV
 10:00 p.m. Barn Closes EPAV

WEDNESDAY, July 31

6:00 a.m. Barns Open WPAV & EPAV
 6:00 a.m. – 8:00 a.m. Barn Access Feeding Time
 WPAV & EPAV
 8:00 a.m. 4-H Horse Gymkhana Orientation &
 Written Test INA
 8:00 a.m. - 6:00 p.m. Dairy & Pygmy Goat Showmanship;
 followed by Dairy Goat Show &
 Pygmy Goat Show; Milk Does after
 Completion of Show RSA
 8:30 a.m. - 5:00 p.m. Open Class Home Economics &
 Creative Crafts Judging SEXH
 9:00 a.m. 4-H Horse Gymkhana Classes
 INA & RUOA
 10:00 a.m. Open Class Fine Arts Judging
 SEXH
9:30 a.m. Wine & Liqueur Judging SEXH
1:30 p.m. Honey Judging SEXH
 3:30 p.m. Horse Awards Ceremony RSA
 4:00 p.m. – 6:00 p.m. Barn Access Feeding Times
 WPAV & EPAV
 4:00 p.m. – 5:00 p.m. Dog Agility Check-in INA
 5:00 p.m. Dog Agility Show INA
5:00 p.m. – 8:00 p.m. Swine Barn Set Up EPAV

WEDNESDAY, July 31

(continued)
 6:00 - 8:00 p.m. Market Goat Check-In/Weigh-
 In/Carcass Ultrasound/Breeding Goat
 Check-In EPAV
 6:00 – 8:00 p.m. Alpaca/Llama Check-In WPAV
 10:00 p.m. Barns Close WPAV & EPAV

THURSDAY, AUGUST 1

6:00 a.m. Barns Open
 6:00 a.m. – 8:00 a.m. Barn Access Feeding Time
 WPAV & EPAV
 7:00 a.m. Dairy Goat - Milk Does & Weigh In
 EPAV
 7:30 a.m. - 9:30 a.m. Open Class Horticulture Check-In
 SEXH
 7:30 a.m. - 10:45 a.m. Open Class Garden Flowers
 Check-In SEXH
 8:00 a.m. Goat Costume Classes & Goat
 Obstacle Course RSA
 8:00 a.m. Alpaca Show & Awards INA
 10:00 a.m. Open Class Horticulture Judging
 SEXH
 11:00 a.m. Open Class Garden Flowers Judging
 SEXH
 11:00 a.m. – 1:00 p.m. Dairy/Pygmy Goat Check-out
 1:00 p.m. Showmanship, Breeding & Market
 Goat Judging RSA
 4:00 p.m. – 6:00 p.m. Barn Access Feeding Time EPAV
BY 5:00 p.m. **Session One Camper Check-Out –
 MUST BE OUT BY 5:00**
 5:00 p.m. Open Class Photography Judging
 SEXH
4:00 p.m. **Poultry Barn Setup** EPAV
 5:00 p.m. – 7:00 p.m. Sheep Barn Setup EPAV
 5:00 p.m. – 8:00 p.m. Beef/Dairy Barn Set Up
 WPAV

6:00 p.m. – 9:00 p.m.

**Swine Weigh-In/Carcass
 Ultrasound** EPAV
 6:00 – 8:00 p.m. Alpacas Check-Out
 10:00 p.m. Barns Close EPAV

FRIDAY, AUGUST 2

6:00 a.m. Barns Open EPAV
 6:00 a.m. – 8:00 a.m. Barn Access Feeding Times EPAV
 7:00 a.m. - 9:00 a.m. Sheep Check-In/Weigh-In/Carcass
 Ultrasound/Breeding Check-in EPAV
 7:00 a.m. – 10:00 a.m. Market Beef Check-In/Weigh-In &
 Breeding Beef Check-In WPAV
10:30 a.m. – 12:30 p.m. **Session Two Camper Check-In**
 12:00 Noon – 5:00 p.m. Dairy Barn Set Up WPAV
 12:00 Noon - 6:00 p.m. Rabbit Barn Set Up WPAV
1:00 p.m. **Dairy Goat Awards** RSA
 3:00 p.m. – 6:00 p.m. Poultry Check-In EPAV
3:00 p.m. – 7:00 p.m. **Session Two Camper Check-In**
 4:00 p.m. – 6:00 p.m. Barn Access Feeding Time
 WPAV & EPAV
 4:00 p.m. - 9:00 p.m. 4-H & Open Class Exhibit Halls
 Open to the Public
5:00 p.m. **Breeding Sheep Judging, Sheep
 Showmanship** RSA

BEC Budweiser Events Center

INA Mac Equipment Indoor Arena

EPAV Mac Equipment Livestock Pavilion - East

SEXH First National Bank Exhibition Hall –South WPAV Mac Equipment Livestock Pavilion –West RUOA Round Up Outdoor Arena

NEXH First National Bank Exhibition Hall – North LHOA Long Horn Outdoor Arena RSA Ranch Small Arena

4-H BLDG McKee 4-H & Community Bldg.

2019 Larimer County Fair Schedule of Events

SCHEDULE as of May 21, 2019 ---- SCHEDULE SUBJECT TO CHANGE

FRIDAY, AUGUST 2

(continued)

6:00 p.m. - 9:00 p.m. Rabbit Check-In (all rabbits) *WPAV*
 7:00 p.m. Poultry Barn Closed *EPAV*
 10:00 p.m. Barns Close *EPAV & WPAV*

SATURDAY, AUGUST 3

6:00 a.m. Barns Open *EPAV & WPAV*
 6:00 a.m. - 8:00 a.m. Barn Access Feeding Time
EPAV & WPAV

7:00 a.m. - 10:00 a.m. Dairy Cattle Check In *WPAV*
 8:30 a.m. - 3:30 p.m. Poultry Showmanship *EPAV*
9:00 a.m. - 11:00 a.m. Session Two Camper Check-In
9:00 a.m. Sheep - Pee Wee Showmanship,
Market Classes *RSA*

10:00 A.M. Weighing Meat Production Trio
 Chickens *EPAV*

10:00 a.m. - 6:00 p.m. Rabbits-Six-Class, Non-Purebred
 Pets, Market Rabbits & Four Class-
 Judging *WPAV*

10:00 a.m. - 9:00 p.m. 4-H & Open Class Exhibit Halls
Open to the Public

4:00 p.m. Swine Showmanship *RSA*

4:00 p.m. - 6:00 p.m. Barn Access Feeding Time
EPAV & WPAV

6:00 p.m. 4-H Rabbit Check-Out (not all
 rabbits) *WPVA*

10:00 p.m. Barns Close *EPAV & WPAV*

SUNDAY, AUGUST 4

6:00 a.m. Barns Open *EPAV & WPAV*
 6:00 a.m. - 8:00 a.m. Barn Access Feeding Times
EPAV & WPAV

7:00 a.m. - 9:00 a.m. Free Pancake Breakfast *Private*
Party Tent outside Indoor Arena

9:00 a.m. Market Swine & Club Pen of Three
 Market Swine, Under Weight/Over
 Weight Pigs Judging
RSA

9:00 a.m. Poultry Judging *EPAV*

10:00 a.m. - 2:30 p.m. Rabbit Showmanship *WPAV*

10:00 a.m. - 8:00 p.m. 4-H & Open Class Exhibit Halls
Open to the Public

1:00 p.m. - 3:30 p.m. Poultry Showmanship *EPAV*

4:00 p.m. Dress A Bunny Contest
INA Concourse

4:00 p.m. Breeding Beef Judging followed by
Beef Showmanship *INA*

4:00 p.m. - 6:00 p.m. Barn Access Feeding Time
EPAV & WPAV

7:00 p.m. PRCA RODEO Performance
BEC

10:00 p.m. Barns Close *EPAV & WPAV*

MONDAY, AUGUST 5

5:00 a.m. Barns Open *WPAV*

6:00 a.m. Barns Open *EPAV*

6:00 a.m. - 8:00 a.m. Barn Access Feeding Time
EPAV & WPAV

9:00 a.m. Market Beef Judging - Heifers, Steers
INA

MONDAY, AUGUST 5

(continued)

9:00 a.m. - 6:00 p.m. Poultry-Judging - *EPAV*
 11:00 a.m. Dairy Cattle Costume Judging
RSA

2:00 p.m. - 8:00 p.m. 4-H & Open Class Exhibit Halls
Open to the Public

4:00 p.m. - 6:00 p.m. Barn Access Feeding Time
EPAV & WPAV

4:00 p.m. - 6:00 p.m. Milking Dairy Cattle Check-In
WPAV

6:00 p.m. - 8:00 p.m. Rabbit Awards Ceremony
RSA

8:00 p.m. - 10:00 p.m. Rabbit Check-Out *WPAV*
 7:00 p.m. PRCA RODEO Performance, "4-H
 Family Night", Market Animal
 Parade of Champions *BEC*

10:00 p.m. Barns Close *EPAV & WPAV*

TUESDAY, AUGUST 6

5:00 a.m. Barns Open *WPAV*

6:00 a.m. Barns Open *EPAV & WPAV*

6:00 a.m. - 8:00 a.m. Barn Access Feeding Time
EPAV & WPAV

8:00 a.m. - 10:00 a.m. Rabbit Check-Out *WPAV*

9:00 a.m. Dairy Cattle Show *INA*

9:00 a.m. Beef Fitting Contest
West Side of West Pavilion

Goat Fitting Contest

West Side of West Pavilion

(Immediately after the Beef Contest)

Mandatory Sale Meeting

INA Bleachers

2:00 p.m.

2:00 p.m. Wild & Crazy Kids Day, *LHOA*

2:00 p.m. - 7:00 p.m. 4-H & Open Class Exhibit Halls
Open to the Public

4:00 p.m. - 6:00 p.m. Barn Access Feeding Time
EPAV & WPAV

4:00 p.m. Round Robin Clinic *INA*

5:00 p.m. Poultry Department Awards Night
RSA

Poultry Exhibit Private Treaty Sale &
 Poultry Checkout & Barn Clean up
(following awards) EPAV

7:00 p.m. Set Up for 4-H & Open Class Check-
 Out *4-H BLDG & SEXH*

7:00 p.m. PRCA RODEO Performance
BEC

10:00 p.m. Barns Close *EPAV & WPAV*

WEDNESDAY, AUGUST 7 JUNIOR LIVESTOCK SALE DAY

6:00 a.m. Barns Open *EPAV & WPAV*

6:00 a.m. - 8:00 a.m. Barn Access Feeding Time
EPAV & WPAV

7:00 a.m. - 10:00 a.m. 4-H Exhibits Check-Out
4-H Building

7:00 a.m. - 1:00 p.m. Livestock Check-Out, excluding
 Junior Livestock Sale Animals

BEC Budweiser Events Center

INA Mac Equipment Indoor Arena

EPAV Mac Equipment Livestock Pavilion - East

SEXH First National Bank Exhibition Hall - South *WPAV* Mac Equipment Livestock Pavilion - West *R/OA* Round Up Outdoor Arena

NEXH First National Bank Exhibition Hall - North *LHOA* Long Horn Outdoor Arena *RSA* Ranch Small Arena

4-H BLDG McKee 4-H & Community Bldg.

2019 Larimer County Fair Schedule of Events
SCHEDULE as of May 21, 2019 ---- SCHEDULE SUBJECT TO CHANGE

WEDNESDAY, AUGUST 7

(continued)

7:00 a.m. – 12:00 Noon	Session Two Camper Check-Out MUST BE OUT BY NOON
7:00 a.m. – 7:00 p.m.	Premium Money may be picked up <i>4-H BLDG</i>
9:00 a.m.	Sr., Int., & Jr. Round Robin <i>INA</i>
4:00 p.m. – 6:00 p.m.	Barn Access Feeding Time <i>EPAV & WPAV</i>
4:30 p.m. - 10:30 p.m.	Junior Livestock Sale <i>RSA</i>
5:00 p.m. – 7:00 p.m.	Open Class Check-Out <i>SEXH</i>

THURSDAY, AUGUST 8

9:00 a.m. – 4:00 p.m.	Extension Fair Office Open <i>(Premium money may be picked up)</i> <i>4-H BLDG</i>
-----------------------	--

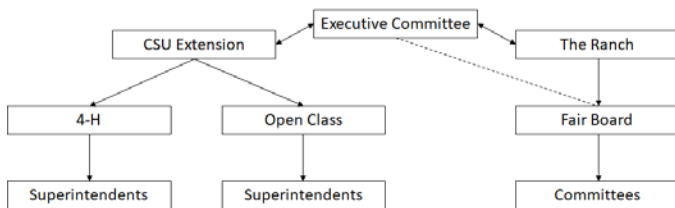
FRIDAY, AUGUST 9

8:00 A.M. – 12:00 Noon	Extension Fair Office Open <i>(Premium money may be picked up - money not picked up by noon will be forfeited)</i> <i>4H BLDG</i>
------------------------	--

General Information

Cooperation: The Larimer County Fair & Rodeo is held in cooperation with the Larimer County Board of Commissioners, The Ranch, the Larimer County Fair Board, the PRCA Rodeo Committee and the Larimer County Office of Colorado State University Extension. The Larimer County Fair & Rodeo does not discriminate on the basis of race, color, sex, religion, age, disability, sexual preference, veteran or marital status, or national origin in its policies or activities.

County Fair Structure



Executive Committee: Made up of a County Commissioner, CSU Extension Director, The Ranch Director, The Fair Board President and the Rodeo representative.

4-H Fair Show Management: 4-H staff and volunteer Superintendents.

Fairground Location: The Larimer County Fair is held at The Ranch located just east of Interstate Highway 25, between exit numbers 259 (Crossroads Blvd.) and 262 (Windsor Highway 392). Access to grounds is off of Fairgrounds Avenue (County Road 5). The mailing address of the Fair Office is 5280 Arena Circle, Suite 101, Loveland, Colorado 80538. Phone 970-619-4009; Fax 970-619-4085. **(Fair Extension Office Phone is 970-619-4080, July 10 - August 9)**

Responsibility: The Ranch, Larimer County Fair Board, and Extension staff will use reasonable diligence to insure safety of exhibits after their arrival and placement but in no case will they be responsible for any loss or damage done to, occasioned by, or arising from any animals or articles on exhibition. The exhibitors shall indemnify The Ranch, Larimer County Fair Board and Extension staff and volunteers of all legal or other proceedings in regard thereto. The entry of any exhibits on the show grounds by any and all exhibitors shall signify his or her agreement to abide by this rule.

Leash Law: Larimer County and the City of Loveland require all dogs to be on a leash at all times on public property. For the safety of animals and people, The Ranch discourages bringing dogs to the Larimer County Fair & Rodeo.

Exhibition Hall Schedule

The First National Bank Building South Exhibition Hall and McKee 4-H Building are open for public viewing:
 Friday, August 2 4 p.m. to 9 p.m.
 Saturday, August 3 10 a.m. to 9 p.m.
 Sunday, August 4 10 a.m. to 8 p.m.
 Monday, August 5 2 p.m. to 8 p.m.
 Tuesday, August 6 2 p.m. to 7 p.m.

First Aid and Emergencies: Every effort will be made to have Emergency Medical Services personnel on site during the busiest times of the Larimer County Fair & Rodeo. A First Aid room will be designated. Please contact any staff member if you need assistance for medical treatment and in the event of a life threatening emergency, please call 911.

Thank you note for Awards - All special awards and trophies are provided by sponsors. These people need to receive a thank you note from the winners in order to encourage their sponsorship for future years. Names and addresses of award sponsor(s) are located on the bottom of the award or in an envelope received when premium money is received.

Larimer County Fair Congeniality Award

The Ted and Mabel Thompson Fair Congeniality Memorial Award will be presented to a Junior Fair exhibitor who works "above and beyond the call of duty" at the 2019 Larimer County Fair. Nominations are to be made via letter to the Extension Office, postmarked no later than **September 16** and should include a brief description of what the individual did to make the 2019 Larimer County Fair a better event. Anyone can nominate an exhibitor. The award will be presented at the county 4-H Achievement Program.

Exhibitor General Rules and Regulations

1. Entries – Prior Entry is required in all departments. Entry Pre-Registration Forms must be submitted to the Larimer County Extension Fair Office, 5280 Arena Circle, Ste #101, Loveland, CO 80538, by 6:00 p.m., July 15. Postmarks, faxes, or internet entries accepted only if posted on or before July 15.

2. Late Entries – 4-H Entry forms received after July 15 are subject to a \$25 late charge per class. No late entries will be taken after 5:00 p.m. on Wednesday, July 24 for 4-H exhibits. No late entries will be taken for Horse after 5:00 p.m. on July 19. Open Class Pre-Registration Forms must include a \$5.00 per department late fee. No late entries will be taken after department check in.

3. Premiums and Special Awards: Exhibitors who win a placing ribbon, i.e. Blue (1st), Red (2nd), White (3rd) receive a cash award (premium). Exhibitors may collect payment for premiums and special awards during the following times.

Wednesday, August 7: 7:00 a.m. - 7:00 p.m. (All Departments)

Thursday, August 8: 9:00 a.m. - 4:00 p.m. (All Departments)

Friday, August 9: 8:00 a.m. - 12:00 noon (All Departments)

Award Money not collected before noon, Friday, August 9 will be forfeited. No Exceptions.

4. Judging – See the judging schedule in front of Fair Book. The decision of the judges will be final. No exhibitor shall be permitted to follow the judges about while the awards are being made. No exhibitor, parent, or superintendent shall try to influence the judge, or in any way hinder the progress of judging. Any discourtesies to the superintendents, judges, or fair officials by the exhibitor, parent, or other person shall be reported to the **Superintendent or Extension staff person with responsibility for that particular class or area.** Violators of this rule will be barred from one or more future Larimer County Fairs.

Any spectator that is interfering with the judging of any event will be asked to leave the show ring area.

5. Release of Exhibits – No exhibit shall be released until 7:00 a.m. Wednesday, August 7, except livestock as listed in the schedule. All exhibits in the 4-H Building must be picked up between 7:00 a.m. and 10:00 a.m., Wednesday, August 7. Open Class exhibits in the South Exhibition Hall must be picked up between **5:00 p.m. and 7:00 p.m., Wednesday, August 7. The 4-H Fair Show Management will not be responsible for exhibits left after 7:00 p.m., August 7.** Removal of any exhibit before the designated time will cause the forfeiture of award money. Early removal requires a written approval from the affected Department Head Superintendent or Department Extension contact person.

6. Rule Violation – A report of a rule violation may be communicated by any means to a Larimer County Extension staff person or Superintendent with responsibility for that particular class or area. All reports regarding conduct or activity during the County Fair shall be made immediately. Any reports of violations of Fair rules will be promptly, impartially, and fully investigated. **The identity of the individual(s) making reports of possible violations or protests and the identity of individuals against whom allegations have been made will be confidential and only revealed as is necessary to investigate the allegations and for any disciplinary hearings. Larimer County Extension**

staff person or Superintendent with responsibility for that particular class or area will communicate final decisions with appropriate parties.

7. Protest – A protest is an allegation that a specific rule of the Larimer County Fair has been violated and must be made in writing and be signed by the person making the protest (and signed by at least one adult). Such protest must set out the particular allegations in detail and state which specific Larimer County Fair rule has been violated on the Appeal Form. A protest must be accompanied by \$100.00 for protests. Said protest fee shall be paid in cash or check and will be returned if the protest is sustained. All protests shall be submitted to the Larimer County Extension staff person with responsibility for that particular class or area immediately after the occasion for such protest, up to 2 hours after the decision or incident being protested. No protest of the Judge's decision will be considered.

A review committee will be established to include the Larimer County Extension staff person with responsibility for that particular class or area, and 2 recruited Superintendents with knowledge of the issue/topic to support making an unbiased and informed decision.

A final decision will be made and communicated in writing to the protester and individual in question from the review committee. Any exhibitor, 4-H parent or legal guardian, or 4-H leader who violates any rule or regulation may be subject to forfeiture of all privileges, awards, and premiums and to such other penalty as agreed to by the Review Committee.

In the event that the exhibitor is not satisfied by the protest resolution, the exhibitor may appeal the protest resolution to the Fair Executive Committee. The appeal must be in writing, on an Appeal Form, and accompanied by a fee of \$100.00 in cash or check. The appeal shall plainly state the matter being appealed and shall be delivered to Larimer County Extension staff person with responsibility for that particular class or area within 2 hours of the protest resolution was communicated. The decision of the Fair Executive Committee is final. The fee(s) imposed above shall be refunded if the matter is resolved in favor of the person bringing the protest or appeal. The forms and policy further explain the protest and appeals procedure.

The Fair Executive Committee has the final and absolute opportunity to evaluate the appeal of review committee. Any exhibitor, 4-H parent or legal guardian, or 4-H leader who violates any rule or regulation may be subject to forfeiture of all privileges, awards, and premiums and to such other penalty as agreed to by the Executive Committee.

8. Unsportsmanlike Conduct – When an exhibitor, parent or leader is guilty of unsportsmanlike conduct and/or inhumane/unethical treatment of an animal, the privilege of that person to participate in future Larimer County Fairs may be revoked.

9. The use of marijuana and CBD in any display, food item, or exhibit is prohibited and shall be rejected. The exhibitor shall be referred to law enforcement.

10. Alcohol Restrictions: Pursuant to Colorado Statute 12-47-901(1)(h)(I), it is illegal to bring any outside alcoholic beverages onto the Larimer County Fairgrounds and Events Complex, including parking lots. Alcoholic beverages not purchased on the premises will be confiscated immediately and may result in fines and/or ejection from the premises.

Out of respect for the goals of the 4-H Youth Development Program and the Colorado 4-H Code of Conduct, alcoholic beverages are discouraged in the 4-H camping areas, Thomas M. McKee 4-H Youth and Community Building, and areas where 4-H animals are housed.

4-H Rules & Regulations

1. Eligibility: Only members in good standing regularly and actively enrolled in the Larimer County 4-H program who have carried out and completed all required project work to date, are eligible to exhibit and show in the 4-H fair classes. (Members must have passed their 8th birthday but not their 19th birthday on December 31, 2018. 4-H exhibitors must be enrolled in the project in which they are exhibiting. 4-H Cloverbuds must have passed their 5th birthday on December 31, 2018.

2. Fees: \$1.00 health inspection fee for horses, beef cattle, dairy cattle, alpaca, goats, sheep, swine, dogs and cat must accompany the entry form(s). Other fees are noted on the entry form.

3. Prior Entry: Prior entry is required in all 4-H departments. Entry forms must be submitted to the Larimer County Extension Fair Office, at the Fairgrounds in Loveland on or before July 15, by 6 p.m.

4. Adding Classes: Classes may be created by Extension Agents for emerging youth development programs under auspices of Larimer County Office of Colorado State University Extension.

5. Code of Conduct: The Larimer County Fair and Rodeo is a family event environment. Patron behavior is expected to be consistent with this family atmosphere. Any violations of rules at The Ranch, local ordinances, or State Statutes may result in eviction from the facility and/or the filing of criminal charges. All 4-H members, parents and leaders must abide by the Colorado 4-H Code of Conduct.

4-H Livestock Division Rules

Exhibit & Exhibitor Rules

1. The Larimer County Fair and 4-H Program adheres to the International Association of Fairs and Expositions (IAFE) National Code of Show Ring Ethics. Each livestock exhibitor is required to sign a form indicating they have read the code and will abide by the guidelines. **(All forms found at the end of the Premium Book.)**

2. Ownership – All animals must be owned by the exhibitor on or before May 31, 2019, except market beef which must be owned by February 19; market lambs and market goats which must be owned by April 29 and market swine by May 1 (excluding Leased Horses & Dairy animals). All registered breeding animals which are shown in the 4-H Division must be registered in the Junior exhibitor's name. **Breeding Beef Heifers must deliver the original copy of the registration papers, brand inspection certificate, or bill of sale by 4:30 p.m. on the ownership deadline (April 1) to the Extension Office.** Upon request, the exhibitor must show certificate verifying said animals or animals are duly registered in his or her name with the breed association in question. The rules of the breed association shall determine the ownership of the animal. Animals may be registered in the name of one or more junior exhibitors but cannot be jointly owned with an adult. If jointly owned, only one owner may exhibit the animal in this Fair. In cases where registration papers are in transit, all prize money, trophies, or special awards won by the animal in question shall be withheld until the owner can furnish satisfactory proof that said registration papers are in due process of being recorded and mailed. Grade or non-registered animals must be accompanied by a bill of sale, affidavit or other written proof of ownership satisfactory to the superintendent. Proof of ownership must be presented upon request to the superintendent in each department by the exhibitors before stalling their livestock. Failure to present proof to superintendents upon request may be grounds to cancel an entry. The act of entering an animal in the County Fair is the giving of consent by the 4-H exhibitor for show management to obtain retinal images on any animal, at any time, and for any reason during Fair and 4-H Fair Show Management may take any action deemed appropriate based on results of the retinal images

3. Showing – All livestock must be on grounds and entered at the time designated to be eligible to show. All livestock 4-H members **are required to present to the Superintendents of each species their up-to-date record book** at the time their project is entered. Books are available by going to the following website: <https://larimer.extension.colostate.edu> If records are not up-to-date, the project will not be allowed to be shown at the 2019 Fair.

a. **Livestock Must Be Shown by the 4-H Exhibitor Personally;** however, Superintendents may allow another Larimer County 4-H exhibitor to substitute in showing in case of timing conflict in two different departments, in case of illness of exhibitor, or other emergency or situation.

b. An exhibitor may show only two exhibits per class in the breeding departments.

c. Each animal shown in a group class must be shown by a different exhibitor.

d. The Superintendent and/or Judge in each department reserves the right to group the classes for the sake of competition.

e. All 4-H livestock exhibitors will be assigned an exhibitor's number which will be worn by the exhibitor while showing.

f. A substitution may be made for an animal entered on the Fair Entry Blank where the entered animal is sick or dies as long as the substitution fits the division and class as pre-entered and meets ownership requirements. **Exception—No substitutions allowed in any Market classes.** A veterinarian certificate must accompany the request. Substitutions must have approval of Head Superintendent of the department.

g. No parents or leaders are allowed in the show ring unless they are ring stewards selected by the coordinating Superintendent

4. Care, Fitting & Grooming of Livestock – 4-H exhibitors are encouraged to care, fit and groom their own livestock whenever possible. Youth should always be present and engaged in fitting and grooming, while receiving support, unless approval has been granted by the Superintendent in writing due to an overlap in 4-H scheduled events. **Appropriate reasons for 4-H youth to recruit help include, but, are not limited to: safety precautions, mentoring, teaching, or multiple animals being prepped for exhibit at the same time. If appropriate approval has not been granted for support to fit and groom an animal without the youth exhibitor present, the youth exhibitor may forfeit eligibility to show the animal in question.**

5. Premises Identification (ID) – All Market Beef, Sheep, Swine, Goat, Rabbit and Poultry youth are required to have a valid Premises ID prior to the Fair Entry date, in order to show at Fair. This does NOT apply to breeding animals. Market Rabbits and Poultry refer to all meat pens/exhibits. There is a place on this year's Fair 4-H Entry Form to record your Premises ID number.

Premises ID is one component of the National Animal Identification System (NAIS). For NAIS's purposes, a premises is defined as a location or site where livestock and poultry are born, handled, housed, managed, marketed, processed, or exhibited. Premises ID is critical to rapid detection and evaluation of the scope of animal disease outbreaks and in improving emergency response efficiency. A Premises ID is not the same as a Scrapie ID (there is no ear tag associated with Premises ID). A Premises ID is always seven digits made up of both numbers and letters. If your 4-H project animal is housed/boarded somewhere other than your property, the Premises ID would need to be obtained from/through the landowner where your animals are housed. It is simple and free to obtain a Premises ID. You can register by calling 303-869-9130.

6. Equipment – All feed and feeding equipment must be furnished by the Exhibitors. Water hoses will not be furnished at the wash racks. Exhibitors are asked to bring their own hoses. Stalls and alleyways must be cleaned by 9 a.m. each morning. No generators allowed due to fire regulations. Exhibitors may have only one fan for the first two beef animals and one additional fan for three or more animals.

7. Control of Livestock – Any livestock deemed uncontrollable, as determined by the Superintendents in charge, will be excused from the show ring or the fairgrounds, depending upon the severity of the situation.

8. The following market species (beef, goat, sheep, swine) will need to be castrated before arrival.

9. All animals (except pygmy goats and meat goats) will need to be dehorned before arrival.

10. 4-H Members, Leaders and Parents are not to bring livestock scales to the Fairgrounds for the purpose of weighing market animals. A scale will be provided for that purpose. Failure to observe this rule will result in animals being disqualified from showing and selling in the Jr. Livestock Sale.

11. No animals will be allowed in the Pavilions until they have gone through their respective species check in/vet check.

Schedule

12. Feeding: Feeding hours are scheduled to be 6 a.m. to 8 a.m. and 4 p.m. to 6 p.m. each day of Fair.

13. ONLY Market Animals Going to State Fair may be released one hour after their show is completed. Release is made through the Head Superintendent of that department only. Exhibitor must present their State Fair Entry to the Head Superintendent and request permission to be released.

14. All 4-H Members may bring show equipment and feed to the barns at the designated times:

- Horse – 6:00 p.m. – 8:00 p.m. July 26
- Dairy Goats & Pygmy Goats – 4:00 – 6:00 p.m. July 28
- Market Goat – 4:00 p.m. – 6:00 p.m. July 30
- Swine – 5:00 p.m. – 8:00 p.m. July 31
- Alpaca – 6:00 – 8:00 p.m. (at check-in time) July 31
- Sheep – 5:00 – 7:00 p.m. August 1
- Beef & Dairy – 5:00 – 8:00 p.m. August 1
- Dairy – 12:00 noon – 5:00 p.m. August 2
- Poultry – 3:00 p.m. – 6:00 p.m. (at check-in time) August 2
- Rabbits – 6:00 p.m. – 9:00 p.m. (at check-in time) August 2
- No animals until check-in.

15. The West Pavilion will close at 9:00 p.m. each night during the Horse Show and reopen at 6:00 a.m. each day. Livestock Pavilions will close at 10:00 p.m. each night there are animals in the barns and will reopen at 6:00 a.m. each day. Poultry barn will close at 7:00 p.m., Friday, August 2. West Pavilion will open at 5:00 a.m. on Monday, August 5 and Tuesday, August 6.

Animal Care

16. Inhumane Treatment of Animals - Abuse of animal(s) in any form will not be allowed. No electric prods will be allowed to be used on any animal at any time. Any violation of this rule and any other activity deemed inhumane by Fair Management will result in immediate disqualification with no recourse.

17. Ethical Treatment of Animals – Tubing, pumping or injecting of any unauthorized substance or water into an animal will not be tolerated. Any violation of this rule and any other activity deemed unethical by Fair Management will result in immediate disqualification with no recourse.

18. Bedding – All bedding must be furnished by Exhibitor, including Poultry and Rabbit Exhibitors. Straw and shavings will be available and sold on grounds. Turf materials must have wood chips underneath them. No sand can be used. **NO DYED OR COLORED SHAVINGS ALLOWED.**

19. Animal Care – Exhibitors must feed, water and bed, and otherwise care for the entries during the Fair. Exhibitors are expected to help keep exhibit areas, grooming areas, and barn perimeters clean and attractive. All animals and other exhibits should be kept clean and in a presentable condition at all times. The Head Superintendent

for each Livestock Department and the 4-H Livestock Extension Agent reserve the right to feed and water neglected animals. Any animal found in neglect of feed, water, and/or care will be dismissed from the grounds and the exhibitor will be scratched in all entered classes with all premiums and awards forfeited.

20. Manure Removal – A designated location will be provided for disposing of manure. Manure must be taken to this area via wheelbarrow or other conveyance. Piling of manure at ends of the barn or in immediate vicinity of building will be prohibited. Use dumpsters that are provided. All exhibitors must clean their stall(s) after exhibit is released. Pens must be left clean.

21. Tying of Livestock – All cattle (Beef and Dairy) must be tied with a neck rope in addition to the regular halter. Head Superintendent or their representative will determine if ties are proper.

22. Housing of Livestock – The Livestock Superintendents will make stall and pen assignments according to prior entries. 4-H clubs will be stalled together at the discretion of the Superintendent in charge. Any change of pen cards by an exhibitor is prohibited unless approved by the Head Superintendent of the department. Any pens not used for housing of livestock will be released to other exhibitors. There will be no tie outs except in the case of emergencies (upon approval of the Superintendent). **DO NOT MOVE OR CHANGE STALL ASSIGNMENTS. NO DISASSEMBLY OF PENS IS PERMITTED. DO NOT REMOVE CENTER PANEL.**

23. Veterinary Needs – The Larimer County Fair will have a practicing veterinarian on the grounds. The exhibitor **can** contact **either the veterinarian on call** or their own veterinarian should the need arise. **Contact a Head Superintendent or Show Official if you need the Fair veterinarian.** Any veterinary fees are the responsibility of the exhibitor. Important – The Superintendent in charge has the right to call for the services of a veterinarian in the treatment of a sick animal if the exhibitor is not available. **Note – A Superintendent or veterinarian must be in attendance when any drug or medication is administered to an animal(s) and a written report filed with the Fair Horse/Livestock Office and placed in the official entry book.**

Meat Quality

24. USDA Wholesome Meat Act and Quality Assurance Program –The Larimer County Fair endorses and supports the USDA Wholesome Meat Act and insists exhibitors be in compliance with all Quality Assurance Programs. Exhibitors of all meat animals (beef, sheep, swine, goats, catch-it program animals, poultry and rabbits) must certify their compliance with manufacturer's pre-market withdrawal periods specified for any and all medications, drugs, medicated feeds, pesticides, or feed additives administered. The use of any non-approved chemical or improper use of approved chemicals is strictly prohibited. Members must submit the Certification Statement of Disclosure (purple form) at check in. Failure to produce this document will make the member ineligible to show at the Larimer County Fair and participate in the Junior Livestock Sale.

The Larimer County Fair management reserves the right to screen or test any market animal for drug residues or illegal drugs of any nature and take any action deemed appropriate if testing results show any positive residues above naturally occurring levels or positive results for illegal drug usage.

25. COOL – The USDA mandated Country of Origin Labeling (COOL) on September 30, 2008. Therefore, all cuts of lamb, goat, chicken and rabbit must have documentation as to the origin of the animals to be marketed in the U.S and international meat industry. Therefore, every 4-H youth showing market animals (sheep, goat, poultry and rabbit) must complete the “Country of Origin Label Declaration” form. 4-H youth can use one form for all species. The form documents the seller’s basic contact information (in this case, the 4-H youth), the animal ID (tag #) for each individual animal in the transaction, and validation of what country(s) the animals were **BORN** and **RAISED** in. It also requires a youth and parent signature. According to USDA, this document must be kept on file for one year (in this case, by the Sale Committee). This form must be turned in at time of check in/weigh in.

26. BSE – Bovine Spongiform Encephalopathy (BSE), commonly known as mad-Cow Disease, is a fatal, neuro-degenerative disease in cattle. Due to the FDA’s food safety requirements, ruminant animals presented for slaughter must have been handled in accordance with the Food and Drug Administration’s ban of feeding identified mammalian derived protein materials to ruminant animals (21 CFR Part 589). The BSE form, required by packers, is validating that you, as a livestock producer, have fed your animal in accordance with this government regulation. This form must be turned in at the time of check in/weigh in.

Carcass Contest

27. Carcass Contests (Market Beef, Market Lamb, Market Swine and Market Goat) – A carcass contest will be held for Market Beef, Swine, Sheep and Goats, providing there is access to packing plants willing to allow carcass data to be collected or ability to ultrasound live livestock.

Plans are to collect actual carcass data on Market Beef, and use ultrasound on Market Lamb, Swine and Goats, but are subject to availability and change.

All Market Lambs, Swine and Goats, regardless of nomination for the Jr. Livestock Sale, are eligible to compete in the carcass contest.

Carcass contest entry for these three species is included on the Livestock Fair Entry Form. If a Market Lamb, Swine, or Goat exhibitor wishes to compete in the carcass contest, the exhibitor must be entered by July 15. Exhibitors may choose to enter up to three (3) animals per species, but must specify tag # on entry form.

Only those Market Beef that qualify to sell in the Jr. Livestock Sale and use a processor where other sale animals are actually being processed will be eligible to compete in the carcass contest, since plans are to collect actual carcass data. If an exhibitor's Market Beef animal qualifies for the Jr. Livestock Sale and he/she wishes to compete in the carcass contest, the exhibitor must be entered in this contest by Wednesday, August 7 at 10 a.m. in the Livestock Office.

By entering the carcass contest, exhibitors are obligated to make their animal available for carcass data collection or ultrasound (during the check-in/weigh-in time for the respective species).

This is an **optional** contest, which will cost \$6/animal to enter (in addition to traditional fair entry fees) and must be paid at time of carcass contest entry. **To be eligible for the carcass contest, your animal must weigh in the range of the specie weight requirements. Underweight and overweight animals will not be considered in the carcass contest. Underweight and overweight carcass data will not be given out. No refunds will be given**

Awards

28. Champion and Reserve Champion Selection – The first place animal of each class will compete for breed/market division champion. Second place animals are required to be brought into the arena. After the Breed/Market Champion is selected, the second place

animal in the class that furnished the Champion competes with the first place animals in the other classes for Reserve Champion.

29. Overall Grand and Reserve Grand Champion Market Beef, Chicken Pens, Ducks, Geese, Goat, Rabbit Pens, Sheep, Swine and Turkeys are required to sell in the Junior Livestock Sale provided all requirements for exhibits and exhibitors are met, including compliance with the Wholesome Meat Act and Quality Assurance Program. Animals eligible for Grand and Reserve Grand Champion Awards, which do not wish to sell in the Junior Livestock Sale, **must be scratched prior to the call of the Grand and Reserve Grand Champion class.** The Superintendent of the Department must be informed of the decision prior to the fielding of the class so an announcement can be made to the judge, other superintendents, exhibitors, and spectators. Once the animal has entered the show ring, it will remain in competition for Grand and Reserve Grand Champion selection until all judging is complete and the Grand and Reserve Grand Champion has been selected by the Judge. No animal can be scratched after judging has started.

County Fair Health Regulations

Health Inspection will be made

–Read Carefully–

30. Procedure:

It will not be necessary to obtain health certificates on livestock prior to arriving on the Fairgrounds. However, it is mandatory that all animals be checked for evidence of infectious or contagious disease. As animals are unloaded and before being stalled, all animals will be examined by veterinarians. Health inspection fees must be paid or animal cannot be stalled or shown, except poultry and rabbits. Animals showing evidence of **contagious** or **infectious** diseases will be released from the Fairgrounds at the discretion of the veterinarians, Head Superintendents and/or the 4-H Livestock Extension Agent. Animals arriving late from other shows must have a current health certificate. Any animal originating from a herd under quarantine because of an infectious or contagious disease shall be ineligible for admission. Dairy and Beef cattle do not have to be tested for Brucellosis or T.B. to be entered at the Fair. Whenever possible, a veterinarian will do random vet checks in the barns. The veterinarians, Head Superintendents and/or the 4-H Livestock Extension Agent will release any animal during the Fair found to be non-acceptable.

Special Requirements

Swine:

1. Swine fed raw garbage will not be allowed on the grounds.
2. Swine showing evidence/symptoms of the following disease conditions (but not limited to) will not be allowed on the grounds:
 - A. PEDV
 - B. Lice
 - C. Scabies
 - D. Atrophic Rhinitis
 - E. Jowl abscesses
 - F. Mange
 - G. Any other infectious or contagious disease, sign of malnutrition or any other animal welfare concern

Sheep:

1. Any sheep showing evidence/symptoms of the following disease conditions (but not limited to) will not be allowed on the grounds:
 - A. Sore Mouth
 - B. Ringworm (unless under treatment by directions of a veterinarian)
 - C. Scabies
 - D. Caseous Lymphadenitis (CL)
 - E. Any other infectious or contagious disease, sign of malnutrition or any other animal welfare concern

Cattle:

1. Any cattle showing evidence/symptoms of any of the following disease conditions (but not limited to) will not be allowed on the grounds:
 - A. Respiratory infections
 - B. Ringworm (unless under treatment by directions of a veterinarian)
 - C. Scabies
 - D. Any other infectious or contagious disease, sign of malnutrition or any other animal welfare concern

Horses:

1. Any horse showing evidence/symptoms of any of the following disease conditions (but not limited to) will not be allowed on the grounds:
 - A. Ringworm (unless under treatment by directions of veterinarian)
 - B. Infectious respiratory diseases
 - C. Strangles
 - D. Any other infectious or contagious disease, sign of malnutrition or any other animal welfare concern

Goats:

1. Any goat showing evidence/symptoms of any of the following disease conditions (but not limited to) will not be allowed on the grounds:
 - A. Sore Mouth
 - B. Ringworm (unless under treatment by directions of a veterinarian)
 - C. Caseous Lymphadenitis (CL)
 - D. Pink Eye
 - E. Lice
 - F. Any other infectious or contagious disease, sign of malnutrition or any other animal welfare concern

Alpacas:

1. Alpaca/Llama's must have proof of current vaccinations (CD&T, AD&E, dewormer) and a negative BVD (Bovine Venereal Disease) test result to check in at County Fair.

Dogs:

1. Dogs must hold a current rabies vaccination certificate **and show proof of current Canine Distemper and Parvovirus vaccinations.**

Cats:

1. Must have proof of the following vaccinations
 - A. Distemper
 - B. Rabies
 - C. Leukemia (test or vaccination)

Poultry & Rabbits:

1. Poultry and Rabbits will be inspected upon arrival. Any animals showing evidence of lice, mites, **ring worm** or another infectious disease will not be allowed on the grounds.

Suggested Vaccinations:

1. Horses should be vaccinated **Encephalomyelitis** (sleeping sickness) **Influenza, Rhinopneumonitis**, West Nile virus, and Tetanus before the month of July.
2. All female breeding cattle should be vaccinated for Brucellosis in accordance with the Federal Brucellosis program.

Inspection Fee – A \$1.00 per head health inspection fee will be assessed to cover the cost of health inspections (excluding poultry, and rabbits). This fee must accompany the entry blank. No exceptions. Dogs will pay \$1.00 per division (obedience, showmanship, rally & agility).

Department D Horses

Superintendent - Jodie Martin-Witt
Extension Contact – Diane Kern

Horse Show Rules

1. Please read all the General Information and Rules, Exhibitor Rules and 4-H Livestock Division Rules starting on page 1 of the Fair Book.
2. Prior entry is required for all classes. **No late entries will be taken for Horse after 5:00 p.m. on July 19.**
3. Horse leaders are to supply the Extension office with their stalling requirements by July 15.
4. Vets will be present at check-in; health certificates are not required at the time of this printing but may be requested if recommended by Colorado State University. During vet check, all leg wraps and blankets must be removed.
5. The 2018 Colorado 4-H Horse Show Rule Book (LA 1500J - 2018) will be used as the guideline for all judging. The Horse Department Superintendent(s) reserve(s) the right to amend or change rules, classes, patterns, and times of scheduled classes at any time prior to the judging. Due notice will be given to exhibitors of any such change. Judge's comments on classes will not be posted.
6. No dogs, bikes or skateboards allowed in the barns or arena.
7. All stalls and alley ways are to be kept clean and swept. Remember, your club is being judged on this. Individuals are expected to clean the wash rack after use.
8. Classes will be broken out by ages and levels. Please check all schedules closely.
 - Junior - Ages 8 to 10 years of age, as of December 31, 2018 - Walk/Trot, Level 1, Level 2
 - Intermediate - Ages 11 to 13 years of age, as of December 31, 2018 - Walk/Trot, Level 1, Level 2, Level 3
 - Senior - Ages 14 to 18 years of age, as of December 31, 2018 - Walk/Trot, Level 1, Level 2, Level 3, Level 4
Levels 3 and 4 will be shown together.
9. The exception to the above is the Ranch Horse classes. Please see details on pages 32 & 33 of this Premium Book.
10. Written Test questions will be taken from 4-H Horse project and related materials. "Readers" will be available for those exhibitors needing help. (Check with Superintendent prior to the Written Test.) Parents may not serve as readers for their own children. Any members communicating in any way during written test will receive a "0" score and will be disqualified from the All Around competition.
11. No spectators are allowed in the staging areas. These are the areas located at the end and next to the arena entrances. This area is for contestants preparing to enter their class. This is for the safety of everyone and in compliance with insurance requirements and will be enforced.
12. All class times are approximate and are subject to change.

Exhibitor Rules

1. No exhibitor may compete in more than 5 classes per division, with 1 class being the written test. If not competing for All-Around, and not taking the written test, an exhibitor may compete in no more than 4 classes. **Any exhibitor that enters more than 5 classes (4 if not competing for All Around) will automatically be dropped from English Controlled Riding and/or Western Reining.**
2. An exhibitor may show only one horse in each performance class, and a horse may only be shown once in each performance class within an age division. If more than one horse has been identified, exhibitor must specify on the entry blank which horse is to be shown in each class.
3. All 4-H Horse exhibitors are required to present their up-to-date record book to their Superintendents at check-in time. (Please bring a hard copy of your record book.) Books are available at the following website: www.larimer.extension.colostate.edu Click on 4-H, then Horse. **Please review the e-record link on the website for the specifics regarding what is considered up-to-date for Fair check-in purposes. If records are not up-to-date, the animal can't be shown at the 2019 Fair.**
4. ASTM/SEI approved helmets must be **worn and correctly fastened**, by exhibitors at all times while mounted. This includes warm-up, riding to and from arenas, during all competitions and all other occasions. Failure to comply with this policy will result in a warning. A second failure to comply will result in dismissal from the 4-H Horse Show.
5. Riding Safety Rules
 - No riding on pavement.
 - Only 4-H members allowed on horses.
 - No riding double.
 - Must have one hand on the reins at all times.
 - Must have one leg on either side of the horse at all times.
 - No cell phone use during testing or while riding.
6. All contestants will be required to wear their exhibitor's number on their back, saddle pad or blanket, visible to the Judge, while the animal is being shown, and to have their exhibitor number with them during the Written Test. Numbers must be worn at all times when mounted.
7. All exhibitors will receive copies of patterns for all classes. These will be sent to all exhibitors by email prior to the horse show. Patterns will also be posted near the show office. Additional copies may be purchased for the fee of \$5.00. Please have your record book and riding levels card with you when you pick up your patterns.
8. **The selected individuals (1st, 2nd or alternates determined and notified) must represent the horse division in the Overall Round Robin held on Wednesday morning, August 7 at 9:00 a.m.**
9. **Dropping classes or any change in horse must be done in the Horse Show Office.**
10. Once a show order is drawn and the exhibitor's number is called, the exhibitor must appear in this order. The exhibitor will be given two minutes in which to appear at the in-gate. Failure to do so will disqualify the exhibitor from that class. The gateman will line the class up in individual order three deep: up, on deck, and in-the-hole. Observe ring courtesy and check-in with the ring clerk prior to each

class to indicate "scratch" or "present" for the class. If you have a conflict with another class, contact Horse Superintendent(s).

11. To be eligible for the All Around Horseman award and Super Team award, you must enter this on your entry form.

Horse Rules

1. All classes are open to registered, grade, or crossbred horses.
2. Any and all horse exhibits that meet the requirements of a bonafide 4-H project may be shown only if the horse ID certificate is in the 4honline system by May 1. If two 4-H members plan to use the same horse, both members must have ID the horse in the system.
3. There will be no age limit on horses to be shown.
4. No stallions may be shown in any horse class.
5. Horses will be stalled at the Larimer County 4-H Horse Coordinator's discretion - one horse per stall. All stalls will be assigned individually. Clubs will be stalled together and assigned tack stalls.
6. Absolutely no horses other than those entered, checked in, and vet checked will be allowed to be stalled on the fairgrounds during the 4-H Horse Show.
7. All horses must be in show shape to enter Fairgrounds. This must be enforced at the club level or the Extension Staff or Superintendent will be required to dismiss the entry. It is recommended that all horses entered at the Fair have the Eastern and Western Encephalomyelitis, West Nile Virus, and Tetanus vaccinations.
8. **Any horse, regardless of their age, that is shown by a W/T or Level 1 rider may be ridden with one hand and a standard western bit as approved by the 4-H western equipment rules or with two hands and a snaffle bit or bosal as described under 4-H equipment rules. Two hands may not be used with a curb bit or any shanked bit regardless of where the reins are attached.**
9. Any horse deemed to be uncontrollable, unsound, or distressed will be excused from competition by Judges or Superintendents.
10. Any horse found in neglect of feed, water, and/or care will be dismissed from the grounds, and the exhibitor will be scratched in all classes entered with all premiums and awards forfeited.
11. Horse check out. English horses may check-out on Sunday, July 28, 6:00 p.m. - 8:00 p.m. Western horses may check-out on Tuesday, July 30, 2:00 p.m. - 8:00 p.m. All stalls are to be vacated as soon as possible on July 31. All stalls must be stripped clean of manure and shavings and checked by a Club Leader to receive a release form. All horses must have a release form to leave the grounds. A special arrangement for other dismissal of horses is to be made with the Larimer County 4-H Program Coordinator.
12. **At no time is anyone, except the youth, or another 4-H member, allowed to ride or exercise a horse.** Family members, leaders, or other Larimer County 4-H members (**no trainers or others**) may offer reasonable assistance to an exhibitor as long as the contestant is actively involved along with the adult. Any exception must be approved by the Superintendents or Program Coordinator in advance.
13. **Gymkhana horses:** Wednesday, July 31 check in between **6:30 and 7:30 a.m.** Horses coming in on this day will not be assigned stalls, may not be placed in any stalls or stalling area and will not be vet

checked **unless conditions warrant. Horses may be kept at trailers inside the fenced area.**

All Around Horseman

The aim of this section is to promote interest in all areas of the horse project and program and to make the horse and individual work together as a team toward better horsemanship.

1. An exhibitor must properly enter and show in the required classes in order to be eligible.
2. Members who have won an All Around Award at a specific level and age division, are not eligible for the All Around again at the same level and age division (Jr., Int., Sr.). **Exhibitors who show up a level without holding that level card will not be eligible for the All Around award for that level. (Example: a level 2 rider showing at level 3 will not be eligible for level 3 All Around.)**
3. The following classes are required to be eligible for **All Around Western**: Written Test (tie breaker), Western Showmanship, Western Horsemanship, **All Around** and **no more than two optional classes**. The optional classes are: Western Riding, Reining, and Trail. (**No Reining or Western Riding for Walk/Trot.**)
4. **All Around English**: Written Test (tie breaker), English Showmanship, English Equitation, **All Around** and **no more than two optional classes**. The optional classes are: Hunter Hack, Show Hack, or English Controlled Riding. (**No Hunter Hack or English Controlled Riding for Walk/Trot.**)
5. **All Around Gymkhana**: Written Test (tie breaker), Barrels, Poles, Poled Key Hole, Flags and **All Around**. (**No Flags for Walk/Trot.**)
6. **All Around Ranch Horse**: Written Test (tie breaker), **Ranch Horsemanship** and **All Around** are required. Then choose up to three of the optional classes, no more than five total classes. The optional classes are: Ranch Trail, Ranch Cattle Sorting, Boxing or Boxing/Fencing and Ranch Riding. See page 34 for your level options. (**No Walk/Trot offered.**)
7. Scores will be ranked on placing and competitors may only use **one horse** per division. No premiums given. Scoring for All Around will be based on the total points earned in **all** classes. If an exhibitor rides in two Option classes, **both** scores will be included in the total for All Around awards.

Super Team Belt Buckle Award

Super Team is a Belt Buckle award for the best rider and one horse combination. Points will be calculated on all ages and levels during the show. One prize will be awarded to whoever receives the most total points. To be eligible you must enter three of the four following divisions; you may enter all four: **English, Western, Gymkhana, and Ranch Horse. Musical Freestyle does not count toward this award.** Rider must use the same horse for all classes entered to be considered for this award. If a tie-breaker is necessary, the following criteria will be used:

1. Showmanship score.
2. Fastest total gymkhana time.
3. Highest points awarded in **cattle sorting**.
4. You can only win this award one time.

2019 4-H Horse Show Schedule

Each arena will follow its own schedule for classes. A show bill will be provided in the check-in packet.

Friday, July 26

6:00 p.m. - 8:00 p.m. Set up time for stalls and tack rooms
No horses to come in this day. All stalls must be prepared before horse check-in. Tack stalls may be locked and each club is responsible for their own locks.

Saturday, July 27

4:00 p.m. – 6:00 p.m......**Check-in/Vet Check of all 4-H Horses**
Horse may only be checked in by a 4-H member and they must have a hard copy of their up-to-date e-record.

5:00 p.m. – 8:30 p.m. Indoor and Outdoor arenas open
9:00 p.m. Barn Closed

Sunday, July 28 English Classes

6:00 a.m. **Barn Open for feeding**

7:30 a.m. – 9:00 a.m. **Indoor and Outdoor arenas open**

10:00 a.m. **Written Test**

Mac Equipment Indoor Arena bleachers

11:30 a.m. **English Showmanship**

Mac Equipment Indoor Arena: Levels Walk/Trot and I; Junior, Intermediate and Senior

Budweiser Events Center Arena: Levels II, III and IV; Junior, Intermediate and Senior

1:30 p.m. **English Equitation**

Mac Equipment Indoor Arena: Levels Walk/Trot and I; Junior, Intermediate and Senior

Budweiser Events Center Arena: Levels II, III and IV; Junior, Intermediate and Senior

Show Hack will follow the completion of English Equitation Classes

Mac Equipment Indoor Arena: Levels Walk/Trot, I, II, III and IV; Junior, Intermediate and Senior

English Controlled Riding will follow the completion of English Equitation Classes

Budweiser Events Center Arena: Levels I, II, III and IV; Junior, Intermediate and Senior

Hunter Hack (Level Walk/Trot card required) will follow the completion of Show Hack Classes

Mac Equipment Indoor Arena, Levels I, II, III and IV Junior, Intermediate and Senior

These classes involve 2 fences set at heights appropriate to the levels competing and work on the rail.

English Horses may check-out between 6:00 p.m. – 8:00 p.m.

All horses must have a release form to leave the grounds.

9:00 p.m. Barn Closed

Monday, July 29 Western Classes

6:00 a.m. Barns open for feeding

6:00 a.m. - 7:00 a.m. Indoor and Outdoor Arenas Open

8:00 a.m. **Written Test**

Mac Equipment Indoor Arena bleachers

9:30 a.m. **Western Showmanship**

Mac Equipment Indoor Arena, Levels Walk/Trot and I, Junior, Intermediates and Senior

Budweiser Events Center Arena: Levels II, III and IV, Junior, Intermediate and Senior.

Round Robin Selection immediately following the completion of Western Showmanship in the Mac Equipment Indoor Arena.

Two exhibitors will be chosen from the English and Western Junior, Intermediate & Senior Showmanship divisions to

compete for Master Showman of the Fair. Members who qualify in English Showmanship must show in English attire. Members who qualify in Western must show in Western attire. Those who qualify in both may choose. Please read rule #8 under Exhibitor Rules in Department D and Livestock Showmanship Round Robin, Department G.

After Lunch Break..... Western Horsemanship
Mac Equipment Indoor Arena, Levels Walk/Trot and I, Junior, Intermediate and Senior

Budweiser Events Center Arena, Levels II, III and IV, Junior, Intermediate and Senior

4:00 p.m. - 5:00 p.m. Musical Freestyle Warm Up

Mac Equipment Indoor Arena

6:00 p.m. 4-H Musical Freestyle Class

Mac Equipment Indoor Arena

This class will be shown by age and levels and all riders must hold a Level I or above card. Junior, Intermediate, and Senior Contestants may show in English and Western tack. See complete rules and scoring posted on the Larimer County Extension web site:

www.larimer.extension.colostate.edu

No horses to check-out of the barn on Monday evening, unless prior arrangements have been made with 4-H Horse Program Coordinator.

9:00 p.m. **Barn Closed**

Tuesday, July 30 Western Classes

6:00 a.m. Barn open for feeding

6:00 a.m. – 7:00 a.m. Indoor and Outdoor Arenas Open

7:30 a.m.....Walk Through Tail Course

8:00 a.m. Reining Classes

Reining: Mac Equipment Indoor Arena, All levels, Junior, Intermediate, and Senior

8:00 a.m. – 11:30 a.m. **Western Trail Class**

Budweiser Events Center Arena. Must sign in with ring steward by **11:00 a.m.** and show at will.

9:30 a.m. **Riding Classes**

Western Riding: Round Up Outdoor Arena, All levels, Senior, Intermediate, and Junior

Ranch Horse Classes

All competitors in these classes must hold a Ranch Horse card with a rating of Level I or higher.

Following Lunch Break. **Ranch Horse Written Test**

Mac Equipment Indoor Arena bleachers **immediately followed by exhibitor meeting**

Following Written Test **Ranch Horse Trail Class**

Budweiser Events Center Arena, ridden in order of go, NOT at will.

Competitors are to check in at the gate by 2:00 p.m.

Ranch Horse Cattle Sorting will follow Ranch Horse Trail in the Mac Equipment Indoor Arena

Ranch Horsemanship will follow Cattle Sorting in the Mac Equipment Indoor Arena

Ranch Riding will follow Ranch Horsemanship in the Mac Equipment Indoor Arena

Boxing and Boxing/Fencing will follow Ranch Riding in the Mac Equipment Indoor Arena

Horse check-out will be from 2:00 p.m. – 8:00 p.m. for horses not competing in Ranch Horse or Gymkhana. All horses must have a release form to leave the grounds.

9:00 p.m. Barn Closed

Wednesday, July 31 Gymkhana Classes

8:00 a.m. Gymkhana Orientation Meeting
 8:00 a.m. Gymkhana Written Test
 Mac Equipment Indoor arena bleachers
 8:30 a.m. Gymkhana Classes, All Levels
 Mac-Equipment Indoor Arena & Round Up Outdoor Arena
3:30 p.m. **Horse Awards Ceremony**
 Small Indoor Arena bleachers

All horses to vacate barns at completion of awards ceremony.

Tuesday, August 6 Round Robin Clinic

4:00 p.m. **Round Robin Clinic**
 Mac Equipment Indoor Arena, Animals Provided – Opportunity
 to learn how to show other species that will be shown in the
 Round Robin on Wednesday morning.

Premiums will be:

1st - \$2.00; 2nd - \$1.50; 3rd - \$1.00; 4th - 10th – Ribbons

Walk-Trot Classes for All English and Western Performance Classes

Walk-Trot classes are for exhibitors who have passed the Walk-Trot levels test, and who have not passed Level 1. Exhibitors may not participate in Walk-Trot classes after they have won two blue ribbons at the Walk-Trot Level.

English Division Written and Performance Classes by Age & Level

	Walk/Trot	Level 1	Level 2	Level 3	Level 4
Juniors					
English Written Test	110	140	170		
English Showmanship	111	141	171		
English Equitation	112	142	172		
Show Hack	113	143	173		
English Controlled Riding		144	174		
Hunter Hack	115	145	175		
All Around	116	146	176		
Intermediates					
English Written Test	120	150	180	200	
English Showmanship	121	151	181	201	
English Equitation	122	152	182	202	
Show Hack	123	153	183	203	
English Controlled Riding		154	184	204	
Hunter Hack	125	155	185	205	
All Around	126	156	186	206	
Seniors					
English Written Test	130	160	190	210	220
English Showmanship	131	161	191	211	221
English Equitation	132	162	192	212	222
Show Hack	133	163	193	213	223
English Controlled Riding		164	194	214	224
Hunter Hack	135	165	195	215	225
All Around	136	166	196	216	226

Western Division Written and Performance Classes by Age & Level

	Walk/Trot	Level 1	Level 2	Level 3	Level 4
Juniors					
Western Written Test	310	340	370		
Western Showmanship	311	341	371		
Western Horsemanship	312	342	372		
Western Riding		343	373		
Western Reining		344	374		
Trail	315	345	375		
All Around	316	346	376		
Intermediates					
Western Written Test	320	350	380	400	
Western Showmanship	321	351	381	401	
Western Horsemanship	322	352	382	402	
Western Riding		353	383	403	
Western Reining		354	384	404	
Trail	325	355	385	405	
All Around	326	356	386	406	
Seniors					
Western Written Test	330	360	390	410	420
Western Showmanship	331	361	391	411	421
Western Horsemanship	332	362	392	412	422
Western Riding		363	393	413	423
Western Reining		364	394	414	424
Trail	335	365	395	415	425
All Around	336	366	396	416	426

Ranch Horse Classes by Age and Levels

Classes will be divided by age groups of Juniors 8-13 and Seniors 14-18, and also by level. All exhibitors must hold a Ranch Horse Levels I card or higher.

1. **There will be a onetime \$30 cattle fee**, per competitor, for these classes. There will be a space on your entry form for this fee.
2. **Ranch Horsemanship:** for description, see page 91 of the 2018 Colorado 4-H Horse Show Rule Book. The pattern will be in your fair pattern book and posted on July 28. All judging forms are located on the CSU Equine site under 4-H Youth and Ranch Horse.
3. **Ranch Trail:** for description, see page 108 of the 2018 Colorado 4-H Horse Show Rule Book.
4. **Ranch Cattle Sorting:** for description, see page 104 of the 2018 Colorado 4-H Horse Show Rule Book. Level 1 riders will enter herd, track a calf for 15 seconds, go back, identify another calf, and track for 15 seconds. Excessive speed will be penalized. Contestants will sort up to three head of cattle with a 2 minute time limit. Level 2 riders will follow class guidelines in the Rule Book.
5. **Boxing:** for description, see page 111 of the 2018 Colorado 4-H Horse Show Rule Book, listed under Individual Cow Work. Boxing is not available for Level 1 riders. Level 2 riders will box **for 50**

seconds. (See #339-C) Level 3 & 4 riders will box, fence and circle or rope. (See #339-D)

6. Ranch Riding: for description see page 118 of the 2018 Colorado 4-H Horse Show Rule Book.

Working Ranch Horse Classes

	Level 1	Level 2	Level 3	Level 4
Juniors				
Written Test	500	520	540	
Ranch Horsemanship	501	521	541	
Ranch Trail	502	522	542	
Ranch Cattle Sorting	503	523	543	
Boxing		524		
Boxing/Fencing			544	
Ranch Riding	505	525	545	
All Around	506	526	546	
Seniors				
Written Test	510	530	550	560
Ranch Horsemanship	511	531	551	561
Ranch Trail	512	532	552	562
Ranch Cattle Sorting	513	533	553	563
Boxing		534		
Boxing/Fencing			554	564
Ranch Riding	515	535	555	565
All Around	516	536	556	566

Gymkhana

The horse to be used for these events **must be an exhibitor's project horse**. Gymkhana rules from the 2018 Colorado 4-H Horse Rule Book will be followed.

Gymkhana Written and Performance Classes by Age & Level

	Walk/Trot	Level 1	Level 2	Level 3	Level 4
Juniors					
Written Test	600	630	660		
Barrels	601	631	661		
Poles	602	632	662		
Poled Key Hole	603	633	663		
Flags		634	664		
All Around	605	635	665		
Intermediates					
Written Test	610	640	670	690	710
Barrels	611	641	671	691	711
Poles	612	642	672	692	712
Poled Key Hole	613	643	673	693	713
Flags		644	674	694	714
All Around	615	645	675	695	715

Seniors					
Written Test	620	650	680	700	720
Barrels	621	651	681	701	721
Poles	622	652	682	702	722
Poled Key Hole	623	653	683	703	723
Flags		654	684	704	724
All Around	625	655	685	705	725

Musical Freestyle

1. Length of performance is to be between 2 and 2 ½ minutes. This is an individual competition. Any animal or human "props" should not distract from the main competitor.

2. This is a costume and music class. It is an individual demonstration of the rider's ability with their horse. Each horse and rider will enter the arena and perform a pattern that they have created to the music of their choice. This is not categorized as a reining or dressage event, but is open to the rider's imagination. This class will combine the elegance and beauty as well as the power and strength of the horse, along with the stirring impact of music.

3. All Horse Show, Exhibitor and Horse rules apply.

4. All contestants must supply their own CD for music. **The music and riding pattern is to be submitted to the Fair Extension Office by 6:00 p.m. on Monday, July 15.** Please have your CD clearly marked with your name, the name of your music and number of music selection.

Musical Freestyle Classes by Age & Levels

	Level 1	Level 2	Level 3	Level 4
Juniors				
Musical Freestyle	800	810		
Intermediates				
Musical Freestyle	801	811	820	
Seniors				
Musical Freestyle	802	812	821	830

Super Team

Class 840. Super Team

Awards

Club Image Award

1. A special banner will be presented at the Awards program to the club who best represents the true essence of 4-H. This banner is to be hung the following year in the club's barn area at the Fair.

2. The club will be selected by a committee of adults.

3. Safety, cleanliness of stall areas, friendliness to visitors, good sportsmanship, and helpfulness to other 4-H members will be the prime emphasis for this award. The committee realizes parents need to help, but at a minimal level. Preference will be given to those clubs whose members either do things themselves or seek help from another 4-H member, rather than a parent or other adult.

Spirit of 4-H Award

1. A special award will be given in the Horse Department to an individual exhibitor who best represents the true spirit of 4-H.

2. Criteria for selection: Individual's display of safety, friendliness, good sportsmanship and helpfulness to other 4-H members.

3. Selection of the winner will be made by a committee, based on votes cast by parents, leaders, spectators and 4-H members. Cast ballots on official ballots. List reason why nominee should receive this special award. It is recommended that you nominate individuals in a 4-H club other than your own club.

Spirit of 4-H Award

Jason & Cheri Kraft, Fort Collins

Special Awards

All Around English Horseman Awards

Junior – Walk/Trot

Leslie Weibel Duke, Berthoud

Junior - Level 1

William & Jane Lentz, Fort Collins

Junior - Level 2

June Baker, Fort Collins

Intermediate – Walk/Trot

Leslie Weibel Duke, Berthoud

Intermediate - Level 1

Patti Phillips of The Group, Inc., Real Estate, Fort Collins

Intermediate - Level 2

Patti Phillips of The Group, Inc., Real Estate, Fort Collins

Senior – Walk/Trot

Leslie Weibel Duke, Berthoud

Senior - Level 1

Owl Canyon Vaqueros 4-H Club, Jennifer Wolf, LaPorte

Senior - Level 2

Laffey's Irish Animals LLC, Steve & Kelly Laffey, Fort Collins

Senior - Level 3

Spring View 4-H Club, Fort Collins

Senior – Level 4

Loveland Ready Mix Concrete, Inc., Fancher Family, Loveland

All Around Western Horseman Awards

Junior – Walk/Trot

Leslie Weibel Duke, Berthoud

Junior - Level 1

Sweetheart Riders 4-H Club, Doug Shirack, Loveland

Junior - Level 2

Sweetheart Riders 4-H Club, Doug Shirack, Loveland

Intermediate – Walk/Trot

Leslie Weibel Duke, Berthoud

Intermediate - Level 1

Royal Vista Equine, Inc., Jill Cook, Fort Collins

Intermediate - Level 2

Janet Parfet & Larry Potter, Loveland

Intermediate - Level 3

Carol Fulkrod, Fort Collins

Senior – Walk/Trot

Leslie Weibel Duke, Berthoud

Senior - Level 1

Eclipse Ranch Performance Horses, Loveland

Senior - Level 2

Halls Out West, Grant & Joyce Hall, Fort Collins

Senior - Level 3

Parker Family, Loveland

Senior Level 4

Robert & Debra Dehn Family, Loveland

All Around Ranch Horseman Awards

Junior – Level 1

Dr. Melissa King, Fort Collins

Senior – Level 1

Barnyard Vet Supply, Loveland

Junior – Level 2

All Animal Feed & Supply, Jessica Neeley-Huwa, Loveland

Senior – Level 2

Poudre Valley Coop, Gordon Ledall, Fort Collins

Senior – Level 3

Cinch 'Em Up 4-H Club, Teresa Wilcox, Wellington

All Around Gymkhana Horseman Awards

Junior – Walk/Trot

Leslie Weibel Duke, Berthoud

Junior - Level 1

Robert & Debra Dehn Family, Loveland

Junior - Level 2

Desperados 4-H Club, Jay Crouse, Fort Collins

Intermediate – Walk/Trot

Leslie Weibel Duke, Berthoud

Intermediate - Level 1

Robert & Debra Dehn Family, Loveland

Intermediate - Level 2

Sheila Roth Family, Fort Collins

Intermediate - Level 3

Patti Phillips of The Group, Inc., Real Estate, Fort Collins

Intermediate – Level 4

Mountain Trails 4-H Club, Dee Dee Farago, Loveland

Senior – Walk/Trot

Leslie Weibel Duke, Berthoud

Senior - Level 1

Robert & Debra Dehn Family, Loveland

Senior - Level 2

Desperados 4-H Club, Jay Crouse, Fort Collins

Senior - Level 3

Patti Phillips of The Group, Inc., Real Estate, Fort Collins

Senior – Level 4

Crowned Creations, Laurel Lalicker, Wellington

Super Team Award

Marv and Jodie Witt, Mead

Robert & Debra Dehn, Loveland

Colorado 4-H Code of Conduct

4-H Members, Leaders, Parents, and other Adults participating in 4-H Programs will:

- 1. Adhere to program rules, curfews, dress codes, policies, and rules of the facility being used.**
- 2. Conduct themselves in a courteous, respectful manner, use appropriate language, exhibit good sportsmanship, and act as positive role models.**
- 3. Abstain from illegal behaviors, use of alcohol, marijuana, illegal or illicit drugs, and tobacco including e-cigarettes and vaping device during 4-H events and activities.**
- 4. Fully participate in scheduled activities.**
- 5. Respect others property and privacy rights.**
- 6. Respect the rights and authority of parents, leaders and Extension Agents.**
- 7. Abstain from abuse (physical and/or verbal) and harassment.**
- 8. Accept personal responsibility for behavior including any financial damage.**
- 9. Be responsible for any financial damage caused by inappropriate behavior.**
- 10. Adhere to principles and rules of safety.**

Consequences for violating any part of this code of conduct may include, but, are not limited to: removal from participation in the event in which the code of conduct has been violated (at the individual's expense); sanctions on participating in future 4-H events; forfeiture of financial support for the event; removal from offices held, etc.

Behavior outside of 4-H activities can affect "member in good standing" or "volunteer in good standing" status.

It is the responsibility of all program participants to reinforce the code of conduct and intervene when necessary to enforce the rules.

Colorado 4-H Dress Code

The following dress code has been developed for 4-H members and leaders to exhibit their best appearance during any 4-H events or activities. If you choose to dress inappropriately, you will be asked to change. Planning ahead will save you the inconvenience of changing your attire during the 4-H event or activity and ensure that you contribute to a pleasant 4-H atmosphere.

Please be advised that the following dress code will be enforced for all 4-H members attending 4-H events and activities.

- Clothing: All clothing shall be neat, clean, acceptable in repair and appearance, and shall be worn within the bounds of decency and good taste as appropriate for 4-H events and activities.
- Articles of clothing which display profanity, products, or slogans which promote tobacco, alcohol, drugs, sex or are in any other way distracting, are prohibited.
- Excessively baggy or tight clothing which advertises gang symbols or affiliation is prohibited.
- Items of clothing which expose bare midriffs, bare chests, undergarments, or that are transparent (see-through) are prohibited. Tank tops with straps wider than one inch are permitted. Please be advised that spaghetti straps, shirts which expose a bare back, halter tops, and tube tops are prohibited.
- Shorts must be mid-thigh length. No cut-off shorts or short-shorts allowed.
- Hats need to be removed for meetings, workshops, meals, and other times when asked to remove them.
- Shoes must be worn at all times deemed appropriate.

IAFE Code of Show Ring Ethics

Exhibitors of animals at livestock shows shall at all times deport themselves with honesty and good sportsmanship. Their conduct in this competitive environment shall always reflect the highest standards of honor and dignity to promote the advancement of agricultural education. This code applies to all exhibitors who compete at the Larimer County Fair. All leaders working with 4-H exhibitors are under an affirmative responsibility to do more than avoid improper conduct or questionable acts. Their moral values must be so certain and positive that those younger and more pliable will be influenced by their fine example. Exhibitors who violate the code of ethics will forfeit premiums and awards and shall be prohibited from future exhibition in accordance with the rules adopted by the Larimer County Fair Board. Exhibitors who violate this code of ethics demean the integrity of all livestock exhibitors and should be prohibited from competition at all livestock shows in the United States and Canada.


The following is a list of guidelines for all exhibitors and all livestock in competitive events:

- a. All exhibitors must present, upon request of Fair and Livestock Show officials, proof of ownership, length of ownership and age of all animals entered. Misrepresentation of ownership, age, or any facts relating thereto is prohibited.
- b. 4-H exhibitors are expected to care for and groom their animals while at the Fair.
- c. Animals shall be presented to the Fair where they will enter the food chain free of violative drug residues. The act of entering an animal in the County Fair is the giving of consent by the 4-H exhibitor for show management to obtain any specimens of urine, saliva, blood, or other substances from the animal to be used in testing. Animals not entered in an event which culminates with the animal entering the food chain shall not be administered drugs other than in accordance with applicable federal, state and provincial statutes, regulations and rules. Livestock shall not be exhibited if the drugs administered in accordance with federal, state and provincial statutes, regulations and rules affect the animal's performance or appearance at the event. If the laboratory report on the analysis of saliva, urine, blood, or other sample taken from livestock indicates the presence of forbidden drugs or medication, this shall be prima facie evidence such substance has been administered to the animal either internally or externally. It is presumed that the sample of urine, saliva, blood, or other substance tested by the laboratory to which it is sent is the one taken from the animal in question, its integrity is preserved and all procedures of said collection and preservation, transfer to the laboratory and analysis of the sample are correct and accurate and the report received from the laboratory pertains to the sample taken from the animal in question and correctly reflects the condition of the animal at the time the sample was taken, with the burden on the owner, exhibitor, fitter, trainer, or absolutely responsible person to prove otherwise.
- d. At any time after an animal arrives at the Fair, all treatments involving the use of drugs and/or medications for the sole purpose of protecting the health of the animal shall be administered by a licensed veterinarian.
- e. Any surgical procedure or injection of any foreign substance or drug or the external application of any substance (irritant, counterirritant, or similar substance) which could affect the animal's performance or alter its natural contour, confirmation, or appearance, except external applications of substances to the hooves or horns of animals which affect appearance only and except for surgical

procedures performed by a duly licensed veterinarian for the sole purpose of protecting the health of the animal, is prohibited.

- f. The use of showing and/or handling practices or devices such as striking animals to cause swelling, using electrical contrivance, or other similar practices are not acceptable and are prohibited.
- g. Direct criticism or interference with the judge, fair or livestock show management, other exhibitors, breed representatives, or show officials before, during, or after the competitive event is prohibited. In the furtherance of their official duty, all judges, fair and livestock show management, or other show officials shall be treated with courtesy, cooperation and respect and no person shall direct abusive or threatening conduct toward them.
- h. No 4-H exhibitor shall conspire with another person or persons to intentionally violate this code of ethics or knowingly contribute or cooperate with another person or persons either by affirmative action or inaction to violate this code of ethics. Violation of this rule shall subject such individual to disciplinary action. The application of this code of ethics provides for absolute responsibility for an animal's condition by the 4-H exhibitor whether or not he or she was actually instrumental in or had actual knowledge of the treatment of the animal in contravention of this code of ethics.
- i. The act of entering an animal is the giving of consent by the 4-H exhibitor to have disciplinary action taken by the Fair Executive Committee without recourse against the Fair Executive Committee. The act of entering an animal is the giving of consent that any proceedings or disciplinary action taken by the Fair Executive Committee may be published with the name of the violators in any publication of the International Association of Fairs and Expositions, including Fairs and Expositions and any special notices to members.
- j. The act of entering an animal in the Larimer County Fair is the giving of verification by the 4-H exhibitor that he or she has read the Code of Show Ring Ethics and understands the consequences of and penalties provided for actions by the code. It is further a consent that any action which contravenes these rules and is also in violation of federal, state, or provincial statutes, regulations, or rules may be released to appropriate law enforcement authorities with jurisdiction over such infractions.

SUBMIT FORM:

 <p>4-H Horse Entry Form – Dept. D Entries Close July 15, 2019</p>	<p>Mail to: Larimer County Fair 5280 Arena Circle, Suite 101 Loveland, CO 80538 **By July 15**</p>	<p>Bring to: Fair Extension Office McKee 4-H Building (970) 619-4080 FAX (970) 619-4085 **July 10 - 15**</p>	<p>Office Use ONLY</p> <p>Exhibitor Number: _____</p> <p>Late Fees: \$ _____</p>
--	---	--	---

Number	Horse Entry Fees	
_____	Horse(s) @ \$6.00 each.....	\$ _____
_____	Health Inspection -- \$1.00 per horse.....	\$ _____
_____	Working Ranch Horse Cattle Fee -- \$30.00/exhibitor ...	\$ _____
_____	Late entry fee from July 16 to July 19 -- \$25.00 per class.....	\$ _____
	Total Amount Due.....	\$ _____

No late entries after July 19

Western Level: _____
English Level: _____
Working Ranch Horse Level: _____

Exhibitor Name: _____

Address: _____

City / Zip: _____

Parent / Guardian Name: _____

4-H Horse Leader: _____

Date of Birth: _____ Age on Dec 31: _____

Home Phone #: _____

4-H Club: _____

Emergency Phone #: () _____

Email: (required) _____

ALL COLUMNS BELOW MUST BE COMPLETED --- USE TWO ENTRY FORMS IF NECESSARY.

Class #	Class Name	Registered Name of Horse	Nickname of Horse	Breed	Horse's Date of Birth	Sex

Please accept the following entries, subject to the rules governing the exhibits at the Larimer County Fair as published in the 2019 Premium Book. All statements made in connection with these entries are true. I hereby release the Larimer County Fair from all damages or loss caused by my exhibit. I understand that horses are unpredictable and I take full responsibility for any injuries or accidents. I also agree to abide by the rules as stated in the Premium Book. Larimer County 4-H rules require participants to wear helmets at all times when mounted.

Signature of Member _____ Date _____

Signature of Parent / Guardian _____ Date _____