

2019 Larimer County Fair

5280 Arena Circle, Ste #101

Loveland, CO 80538

Fairgrounds Main Office - (970) 619-4000 FAX 619-4001

Fair Extension Entry Office - (970) 619-4080 (July 10 – August 9) FAX – 970-619-4085

INDEX

2019 County Fair Schedule

General Information.....1

Exhibitor General Rules & Regulations.....2

Open Class Division

How to Enter Open Class Exhibits130

General Rules & Regulations.....131

Open Class Horticulture & Garden Flowers

How to Enter Open Class Exhibits130

Department OG - Horticulture132

Department OJ - Garden Flowers134

Open Class Home Economics, Fine Arts, Photography & Creative Crafts

How to Enter Open Class Exhibits130

General Rules & Regulations.....131

Open Class Rules136

Department OK - Baked Products137

Department OL - Canned & Dried Products139

Department OM - Needlework142

Department ON - Quilting144

Department OP - Spinning & Weaving147

Department OR - Machine Work149

Department OS - Fine Arts151

Department OT - Photography153

Department OU - Creative Crafts155

Entry Forms

Open Class Entry Form

2019 Larimer County Fair Schedule of Events

SCHEDULE as of May 21, 2019 ---- SCHEDULE SUBJECT TO CHANGE

WEDNESDAY, JULY 10

8:00 a.m. - 5:00 p.m. Fair Extension Office Opens,
McKee Building, The Ranch

THURSDAY, JULY 11

8:00 a.m. - 5:00 p.m. Fair Extension Office Open,
McKee Building, The Ranch

FRIDAY, JULY 12

8:00 A.M. - 5:00 p.m. Fair Extension Office Open,
McKee Building, The Ranch

MONDAY, JULY 15

8:00 a.m. - 6:00 p.m. 4-H & OPEN CLASS EXHIBIT
ENTRY/PRE-REGISTRATION
FORM SUBMISSION DEADLINE-
Fairgrounds Extension Office,
McKee Building, The Ranch

By 6:00 p.m. Musical Freestyle Riding Pattern and
Music Submitted to Fairgrounds
Extension Office, *McKee Building,
The Ranch*

THURSDAY, JULY 18

5:00 p.m. - 6:30 p.m. 4-H Cat Show Set Up *4-H BLDG*

FRIDAY, JULY 19

8:00 a.m. - 9:00 a.m. 4-H Cat Show Check-In *4-H BLDG*
9:00 a.m. 4-H Cat Show *4-H BLDG*
1:00 p.m. - 4:00 p.m. Dog Show Set-Up *NEXH*
5:00 p.m. Dress-A-Pup *NEXH*
5:00 p.m. **All Horse Entries Close**

SATURDAY, JULY 20

1:00 p.m. - 2:00 p.m. 4-H Dog Showmanship & Advanced,
Excellent & Advanced/Excellent
Rally Check-In *SEXH*

2:30 p.m. 4-H Dog Showmanship & Advanced,
Excellent & Advanced/Excellent
Rally Show
SEXH

SUNDAY, JULY 21

8:00 a.m. - 9:30 a.m. 4-H Dog Obedience & Novice &
Intermediate Rally Check-In *SEXH*
10:00 a.m. 4-H Dog Obedience & Novice &
Intermediate Rally Show
SEXH

WEDNESDAY, JULY 24

7:30 a.m. **Sign up for Interview Judging
Open until 12:00 noon Monday
July 29 - Online**
9:00 a.m. 4-H Fashion Revue Judging,
4-H BLDG
5:00 p.m. All 4-H Entries Close (No entries
accepted beyond this point)
7:00 p.m. Public Fashion Revue,
4-H BLDG, Exhibit Hall

THURSDAY, JULY 25

4:00 p.m. Premier Exhibitor Testing
4-H BLDG
4:00 p.m. Supreme Beef Interviews
4-H BLDG
4:00 p.m. Dairy Goat Knowledge Bowl Contest
4-H BLDG
7:00 p.m. Livestock Superintendent Meeting,
RSA

FRIDAY, JULY 26

6:00 p.m. - 8:00 p.m. 4-H Horse Stall Set Up (No Horses)
WPAV

SATURDAY, JULY 27

9:30 a.m. LARIMER COUNTY FAIR
PARADE *Downtown Loveland*
6:00 p.m. - 8:00 p.m. **Session One & Whole Fair Camper
Check-In**
4:00 p.m. - 6:00 p.m. **Horse Check-In ALL Horses
Vet Check WPAV**
5:00 p.m. - 8:30 p.m. **Mac Equipment Indoor Arena &
Round Up Outdoor Arena - Open
Barn Closes WPAV**

SUNDAY, JULY 28

6:00 a.m. Barn Opens *WPAV*
7:30 a.m. - 9:00 a.m. Indoor & Outdoor Arenas Open
8:00 a.m. Model Rocketry Fly Day
Field East of Parking Lot A
8:00 a.m. - 12:00 Noon **Session One & Whole Fair Camper
Check-In**
10:00 a.m. - 6:00 p.m. 4-H Horse Show English Classes
INA & BEC
4:00 p.m. - 6:00 p.m. Barn Access Feeding Time *WPAV*
6:00 p.m. - 8:00 p.m. English Horse Check-Out *WPAV*
9:00 p.m. Barn Closes *WPAV*
4:00 p.m. - 6:00 p.m. Dairy /Pygmy Goat Barn Set Up
EPAV

MONDAY, JULY 29

6:00 a.m. Barn Opens *WPAV*
6:00 a.m. - 7:00 a.m. Indoor & Outdoor Arenas Open
6:00 a.m. - 8:00 a.m. Barn Access Feeding Time *WPAV*
8:00 a.m. - 4:00 p.m. 4-H Horse Show Western Classes
INA & BEC
4:00 p.m. - 6:00 p.m. Barn Access Feed Time *WPAV*
4:00 p.m. - 7:00 p.m. Interview Judging Set Up
4-H BLDG
4:00 p.m. - 7:00 p.m. Open Class Exhibit Set Up
SEXH
4:00 p.m. - 7:00 p.m. **Dairy/Pygmy Goat Check-In & Vet
Check EPAV**
6:00 p.m. Musical Freestyle *INA*
9:00 p.m. **Barns Close WPAV**

BEC Budweiser Events Center

INA Mac Equipment Indoor Arena

EPAV Mac Equipment Livestock Pavilion - East

SEXH First National Bank Exhibition Hall - South *WPAV* Mac Equipment Livestock Pavilion - West *RUAO* Round Up Outdoor Arena

NEXH First National Bank Exhibition Hall - North *LHOA* Long Horn Outdoor Arena *RSA* Ranch Small Arena

4-H BLDG McKee 4-H & Community Bldg.

2019 Larimer County Fair Schedule of Events

SCHEDULE as of May 21, 2019 ---- SCHEDULE SUBJECT TO CHANGE

TUESDAY, JULY 30

6:00 a.m.	Barns Open	WPAV
6:00 a.m. – 8:00 a.m.	Barn Access Feeding Time	WPAV
7:30 a.m.	Walk Through Trail Course	BEC
8:00 a.m. – 2:00 p.m.	4-H Horse Show Western Classes	INA & BEC
8:00 a.m. – 11:30 a.m.	4-H Horse Western Trail	BEC
8:30 a.m. - 10:00 a.m.	4-H General & Family Projects not being interview judged - Check-In	4-H BLDG
9:00 a.m. - 5:30 p.m.	4-H General Projects - Interview Judging – by appointment	4-H BLDG
9:00 a.m. - 5:00 p.m.	4-H Consumer & Family Projects - Interview Judging - by appointment	4-H BLDG
10:00 a.m. - 4:00 p.m.	Cloverbud & Special 4-H Displays Check-In	4-H BLDG
1:00 p.m. – 2:00 p.m.	Dairy Goat Entry Check & Clipper Decontamination	EPAV
2:00 – 4:00 p.m.	Dairy Goat Fitting & Judging Contests	RSA
2:00 p.m. – 8:00 p.m.	Horse Check-Out	WPAV
2:00 p.m. – 8:30 p.m.	4-H Ranch Horse Classes	INA & BEC
4:00 p.m. – 6:00 p.m.	Market Goat Barn Set Up	EPAV
4:00 p.m. – 6:00 p.m.	Barn Access Feeding Time	WPAV
5:00 p.m. - 8:00 p.m.	Open Class Home Economics, Fine Arts, Photography & Creative Crafts Exhibits - Check-In	SEXH
6:00 p.m.	Milk Does & Weigh In by 6:00 p.m.	EPAV
9:00 p.m.	Barn Closes	WPAV
10:00 p.m.	Barn Closes	EPAV

WEDNESDAY, July 31

6:00 a.m.	Barns Open	WPAV & EPAV
6:00 a.m. – 8:00 a.m.	Barn Access Feeding Time	WPAV & EPAV
8:00 a.m.	4-H Horse Gymkhana Orientation & Written Test	INA
8:00 a.m. - 6:00 p.m.	Dairy & Pygmy Goat Showmanship; followed by Dairy Goat Show & Pygmy Goat Show; Milk Does after Completion of Show	RSA
8:30 a.m. - 5:00 p.m.	Open Class Home Economics & Creative Crafts Judging	SEXH
9:00 a.m.	4-H Horse Gymkhana Classes	INA & RUOA
10:00 a.m.	Open Class Fine Arts Judging	SEXH
9:30 a.m.	Wine & Liquer Judging	SEXH
1:30 p.m.	Honey Judging	SEXH
3:30 p.m.	Horse Awards Ceremony	RSA
4:00 p.m. – 6:00 p.m.	Barn Access Feeding Times	WPAV & EPAV
4:00 p.m. – 5:00 p.m.	Dog Agility Check-in	INA
5:00 p.m.	Dog Agility Show	INA
5:00 p.m. – 8:00 p.m.	Swine Barn Set Up	EPAV

WEDNESDAY, July 31

(continued)

6:00 - 8:00 p.m.	Market Goat Check-In/Weigh-In/Carcass Ultrasound/Breeding Goat Check-In	EPAV
6:00 – 8:00 p.m.	Alpaca/Llama Check-In	WPAV
10:00 p.m.	Barns Close	WPAV & EPAV

THURSDAY, AUGUST 1

6:00 a.m.	Barns Open	
6:00 a.m. – 8:00 a.m.	Barn Access Feeding Time	WPAV & EPAV
7:00 a.m.	Dairy Goat - Milk Does & Weigh In	EPAV
7:30 a.m. - 9:30 a.m.	Open Class Horticulture Check-In	SEXH
7:30 a.m. - 10:45 a.m.	Open Class Garden Flowers Check-In	SEXH
8:00 a.m.	Goat Costume Classes & Goat Obstacle Course	RSA
8:00 a.m.	Alpaca Show & Awards	INA
10:00 a.m.	Open Class Horticulture Judging	SEXH
11:00 a.m.	Open Class Garden Flowers Judging	SEXH
11:00 a.m. – 1:00 p.m.	Dairy/Pygmy Goat Check-out Showmanship, Breeding & Market Goat Judging	RSA
1:00 p.m.	Barn Access Feeding Time	EPAV
4:00 p.m. – 6:00 p.m.	Session One Camper Check-Out – MUST BE OUT BY 5:00	
BY 5:00 p.m.	Open Class Photography Judging	SEXH
5:00 p.m.	Poultry Barn Setup	EPAV
4:00 p.m.	Sheep Barn Setup	EPAV
5:00 p.m. – 7:00 p.m.	Beef/Dairy Barn Set Up	WPAV
5:00 p.m. – 8:00 p.m.		
6:00 p.m. – 9:00 p.m.	Swine Weigh-In/Carcass Ultrasound	EPAV
6:00 – 8:00 p.m.	Alpacas Check-Out	
10:00 p.m.	Barns Close	EPAV
FRIDAY, AUGUST 2		
6:00 a.m.	Barns Open	EPAV
6:00 a.m. – 8:00 a.m.	Barn Access Feeding Times	EPAV
7:00 a.m. - 9:00 a.m.	Sheep Check-In/Weigh-In/Carcass Ultrasound/Breeding Check-in	EPAV
7:00 a.m. – 10:00 a.m.	Market Beef Check-In/Weigh-In & Breeding Beef Check-In	WPAV
10:30 a.m. – 12:30 p.m.	Session Two Camper Check-In	
12:00 Noon – 5:00 p.m.	Dairy Barn Set Up	WPAV
12:00 Noon – 6:00 p.m.	Rabbit Barn Set Up	WPAV
1:00 p.m.	Dairy Goat Awards	RSA
3:00 p.m. – 6:00 p.m.	Poultry Check-In	EPAV
3:00 p.m. – 7:00 p.m.	Session Two Camper Check-In	
4:00 p.m. – 6:00 p.m.	Barn Access Feeding Time	WPAV & EPAV
4:00 p.m. - 9:00 p.m.	4-H & Open Class Exhibit Halls Open to the Public	
5:00 p.m.	Breeding Sheep Judging, Sheep Showmanship	RSA

BEC Budweiser Events Center

INA Mac Equipment Indoor Arena

EPAV Mac Equipment Livestock Pavilion - East

SEXH First National Bank Exhibition Hall –South WPAV Mac Equipment Livestock Pavilion –West RUOA Round Up Outdoor Arena

NEXH First National Bank Exhibition Hall – North LHOA Long Horn Outdoor Arena RSA Ranch Small Arena

4-H BLDG McKee 4-H & Community Bldg.

2019 Larimer County Fair Schedule of Events

SCHEDULE as of May 21, 2019 ---- SCHEDULE SUBJECT TO CHANGE

FRIDAY, AUGUST 2

(continued)

6:00 p.m. - 9:00 p.m. Rabbit Check-In (all rabbits) *WPAV*
 7:00 p.m. Poultry Barn Closed *EPAV*
 10:00 p.m. Barns Close *EPAV & WPAV*

SATURDAY, AUGUST 3

6:00 a.m. Barns Open *EPAV & WPAV*
 6:00 a.m. - 8:00 a.m. Barn Access Feeding Time
EPAV & WPAV

7:00 a.m. - 10:00 a.m. Dairy Cattle Check In *WPAV*
 8:30 a.m. - 3:30 p.m. Poultry Showmanship *EPAV*
9:00 a.m. - 11:00 a.m. Session Two Camper Check-In
9:00 a.m. Sheep - Pee Wee Showmanship,
Market Classes *RSA*

10:00 A.M. Weighing Meat Production Trio
 Chickens *EPAV*

10:00 a.m. - 6:00 p.m. Rabbits-Six-Class, Non-Purebred
 Pets, Market Rabbits & Four Class-
 Judging *WPAV*

10:00 a.m. - 9:00 p.m. 4-H & Open Class Exhibit Halls
Open to the Public

4:00 p.m. Swine Showmanship *RSA*

4:00 p.m. - 6:00 p.m. Barn Access Feeding Time
EPAV & WPAV

6:00 p.m. 4-H Rabbit Check-Out (not all
 rabbits) *WPVA*

10:00 p.m. Barns Close *EPAV & WPAV*

SUNDAY, AUGUST 4

6:00 a.m. Barns Open *EPAV & WPAV*
 6:00 a.m. - 8:00 a.m. Barn Access Feeding Times
EPAV & WPAV

7:00 a.m. - 9:00 a.m. Free Pancake Breakfast *Private*
Party Tent outside Indoor Arena
 9:00 a.m. Market Swine & Club Pen of Three
 Market Swine, Under Weight/Over
 Weight Pigs Judging
RSA

9:00 a.m. Poultry Judging *EPAV*

10:00 a.m. - 2:30 p.m. Rabbit Showmanship *WPAV*

10:00 a.m. - 8:00 p.m. 4-H & Open Class Exhibit Halls
Open to the Public

1:00 p.m. - 3:30 p.m. Poultry Showmanship *EPAV*
 4:00 p.m. Dress A Bunny Contest
INA Concourse

4:00 p.m. Breeding Beef Judging followed by
Beef Showmanship *INA*

4:00 p.m. - 6:00 p.m. Barn Access Feeding Time
EPAV & WPAV

7:00 p.m. PRCA RODEO Performance
BEC

10:00 p.m. Barns Close *EPAV & WPAV*

MONDAY, AUGUST 5

5:00 a.m. Barns Open *WPAV*

6:00 a.m. Barns Open *EPAV*

6:00 a.m. - 8:00 a.m. Barn Access Feeding Time
EPAV & WPAV

9:00 a.m. Market Beef Judging - Heifers, Steers
INA

MONDAY, AUGUST 5

(continued)

9:00 a.m. - 6:00 p.m. Poultry-Judging - *EPAV*
 11:00 a.m. Dairy Cattle Costume Judging
RSA

2:00 p.m. - 8:00 p.m. 4-H & Open Class Exhibit Halls
Open to the Public

4:00 p.m. - 6:00 p.m. Barn Access Feeding Time
EPAV & WPAV

4:00 p.m. - 6:00 p.m. Milking Dairy Cattle Check-In
WPAV

6:00 p.m. - 8:00 p.m. Rabbit Awards Ceremony
RSA

8:00 p.m. - 10:00 p.m. Rabbit Check-Out *WPAV*
 7:00 p.m. PRCA RODEO Performance, "4-H
 Family Night", Market Animal
 Parade of Champions *BEC*

10:00 p.m. Barns Close *EPAV & WPAV*

TUESDAY, AUGUST 6

5:00 a.m. Barns Open *WPAV*

6:00 a.m. Barns Open *EPAV & WPAV*

6:00 a.m. - 8:00 a.m. Barn Access Feeding Time
EPAV & WPAV

8:00 a.m. - 10:00 a.m. Rabbit Check-Out *WPAV*

9:00 a.m. Dairy Cattle Show *INA*

9:00 a.m. Beef Fitting Contest
West Side of West Pavilion

Goat Fitting Contest

West Side of West Pavilion

(Immediately after the Beef Contest)

Mandatory Sale Meeting

INA Bleachers

2:00 p.m.

2:00 p.m.

2:00 p.m. - 7:00 p.m.

4:00 p.m. - 6:00 p.m.

4:00 p.m.

5:00 p.m.

5:00 p.m.

5:00 p.m.

5:00 p.m.

5:00 p.m.

5:00 p.m.

5:00 p.m.

5:00 p.m.

5:00 p.m.

5:00 p.m.

5:00 p.m.

5:00 p.m.

5:00 p.m.

5:00 p.m.

5:00 p.m.

5:00 p.m.

5:00 p.m.

5:00 p.m.

5:00 p.m.

5:00 p.m.

5:00 p.m.

5:00 p.m.

5:00 p.m.

5:00 p.m.

5:00 p.m.

5:00 p.m.

5:00 p.m.

5:00 p.m.

5:00 p.m.

Wild & Crazy Kids Day, *LHOA*

4-H & Open Class Exhibit Halls

Open to the Public

Barn Access Feeding Time

EPAV & WPAV

Round Robin Clinic *INA*

Poultry Department Awards Night

RSA

Poultry Exhibit Private Treaty Sale &

Poultry Checkout & Barn Clean up

(following awards) EPAV

Set Up for 4-H & Open Class Check-

Out *4-H BLDG & SEXH*

PRCA RODEO Performance

BEC

Barns Close *EPAV & WPAV*

WEDNESDAY, AUGUST 7

JUNIOR LIVESTOCK SALE

DAY

6:00 a.m.

6:00 a.m.

6:00 a.m.

6:00 a.m.

6:00 a.m.

6:00 a.m.

6:00 a.m.

6:00 a.m.

6:00 a.m.

6:00 a.m.

6:00 a.m.

6:00 a.m.

6:00 a.m.

6:00 a.m.

Barns Open *EPAV & WPAV*

Barn Access Feeding Time

EPAV & WPAV

4-H Exhibits Check-Out

4-H Building

Livestock Check-Out, excluding

Junior Livestock Sale Animals

BEC Budweiser Events Center

INA Mac Equipment Indoor Arena

EPAV Mac Equipment Livestock Pavilion - East

SEXH First National Bank Exhibition Hall - South *WPAV* Mac Equipment Livestock Pavilion - West *R/OA* Round Up Outdoor Arena

NEXH First National Bank Exhibition Hall - North *LHOA* Long Horn Outdoor Arena *RSA* Ranch Small Arena

4-H BLDG McKee 4-H & Community Bldg.

2019 Larimer County Fair Schedule of Events
SCHEDULE as of May 21, 2019 ---- SCHEDULE SUBJECT TO CHANGE

WEDNESDAY, AUGUST 7

(continued)

7:00 a.m. – 12:00 Noon	Session Two Camper Check-Out MUST BE OUT BY NOON
7:00 a.m. – 7:00 p.m.	Premium Money may be picked up <i>4-H BLDG</i>
9:00 a.m.	Sr., Int., & Jr. Round Robin <i>INA</i>
4:00 p.m. – 6:00 p.m.	Barn Access Feeding Time <i>EPAV & WPAV</i>
4:30 p.m. - 10:30 p.m.	Junior Livestock Sale <i>RSA</i>
5:00 p.m. – 7:00 p.m.	Open Class Check-Out <i>SEXH</i>

THURSDAY, AUGUST 8

9:00 a.m. – 4:00 p.m.	Extension Fair Office Open <i>(Premium money may be picked up)</i> <i>4-H BLDG</i>
-----------------------	--

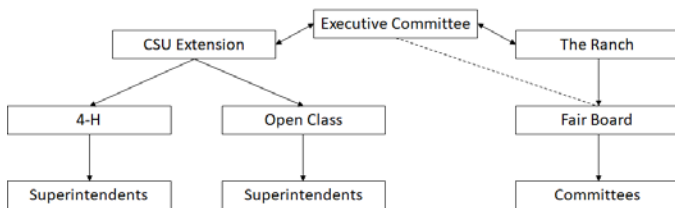
FRIDAY, AUGUST 9

8:00 A.M. – 12:00 Noon	Extension Fair Office Open <i>(Premium money may be picked up -</i> <i>money not picked up by noon will be</i> <i>forfeited)</i> <i>4H BLDG</i>
------------------------	--

General Information

Cooperation: The Larimer County Fair & Rodeo is held in cooperation with the Larimer County Board of Commissioners, The Ranch, the Larimer County Fair Board, the PRCA Rodeo Committee and the Larimer County Office of Colorado State University Extension. The Larimer County Fair & Rodeo does not discriminate on the basis of race, color, sex, religion, age, disability, sexual preference, veteran or marital status, or national origin in its policies or activities.

County Fair Structure



Executive Committee: Made up of a County Commissioner, CSU Extension Director, The Ranch Director, The Fair Board President and the Rodeo representative.

4-H Fair Show Management: 4-H staff and volunteer Superintendents.

Fairground Location: The Larimer County Fair is held at The Ranch located just east of Interstate Highway 25, between exit numbers 259 (Crossroads Blvd.) and 262 (Windsor Highway 392). Access to grounds is off of Fairgrounds Avenue (County Road 5). The mailing address of the Fair Office is 5280 Arena Circle, Suite 101, Loveland, Colorado 80538. Phone 970-619-4009; Fax 970-619-4085. **(Fair Extension Office Phone is 970-619-4080, July 10 - August 9)**

Responsibility: The Ranch, Larimer County Fair Board, and Extension staff will use reasonable diligence to insure safety of exhibits after their arrival and placement but in no case will they be responsible for any loss or damage done to, occasioned by, or arising from any animals or articles on exhibition. The exhibitors shall indemnify The Ranch, Larimer County Fair Board and Extension staff and volunteers of all legal or other proceedings in regard thereto. The entry of any exhibits on the show grounds by any and all exhibitors shall signify his or her agreement to abide by this rule.

Leash Law: Larimer County and the City of Loveland require all dogs to be on a leash at all times on public property. For the safety of animals and people, The Ranch discourages bringing dogs to the Larimer County Fair & Rodeo.

Exhibition Hall Schedule

The First National Bank Building South Exhibition Hall and McKee 4-H Building are open for public viewing:
 Friday, August 2 4 p.m. to 9 p.m.
 Saturday, August 3 10 a.m. to 9 p.m.
 Sunday, August 4 10 a.m. to 8 p.m.
 Monday, August 5 2 p.m. to 8 p.m.
 Tuesday, August 6 2 p.m. to 7 p.m.

First Aid and Emergencies: Every effort will be made to have Emergency Medical Services personnel on site during the busiest times of the Larimer County Fair & Rodeo. A First Aid room will be designated. Please contact any staff member if you need assistance for medical treatment and in the event of a life threatening emergency, please call 911.

Thank you note for Awards - All special awards and trophies are provided by sponsors. These people need to receive a thank you note from the winners in order to encourage their sponsorship for future years. Names and addresses of award sponsor(s) are located on the bottom of the award or in an envelope received when premium money is received.

Larimer County Fair Congeniality Award

The Ted and Mabel Thompson Fair Congeniality Memorial Award will be presented to a Junior Fair exhibitor who works "above and beyond the call of duty" at the 2019 Larimer County Fair. Nominations are to be made via letter to the Extension Office, postmarked no later than **September 16** and should include a brief description of what the individual did to make the 2019 Larimer County Fair a better event. Anyone can nominate an exhibitor. The award will be presented at the county 4-H Achievement Program.

Exhibitor General Rules and Regulations

1. Entries – Prior Entry is required in all departments. Entry Pre-Registration Forms must be submitted to the Larimer County Extension Fair Office, 5280 Arena Circle, Ste #101, Loveland, CO 80538, by 6:00 p.m., July 15. Postmarks, faxes, or internet entries accepted only if posted on or before July 15.

2. Late Entries – 4-H Entry forms received after July 15 are subject to a \$25 late charge per class. No late entries will be taken after 5:00 p.m. on Wednesday, July 24 for 4-H exhibits. No late entries will be taken for Horse after 5:00 p.m. on July 19. Open Class Pre-Registration Forms must include a \$5.00 per department late fee. No late entries will be taken after department check in.

3. Premiums and Special Awards: Exhibitors who win a placing ribbon, i.e. Blue (1st), Red (2nd), White (3rd) receive a cash award (premium). Exhibitors may collect payment for premiums and special awards during the following times.

Wednesday, August 7: 7:00 a.m. - 7:00 p.m. (All Departments)

Thursday, August 8: 9:00 a.m. - 4:00 p.m. (All Departments)

Friday, August 9: 8:00 a.m. - 12:00 noon (All Departments)

Award Money not collected before noon, Friday, August 9 will be forfeited. No Exceptions.

4. Judging – See the judging schedule in front of Fair Book. The decision of the judges will be final. No exhibitor shall be permitted to follow the judges about while the awards are being made. No exhibitor, parent, or superintendent shall try to influence the judge, or in any way hinder the progress of judging. Any discourtesies to the superintendents, judges, or fair officials by the exhibitor, parent, or other person shall be reported to the **Superintendent or Extension staff person with responsibility for that particular class or area.** Violators of this rule will be barred from one or more future Larimer County Fairs.

Any spectator that is interfering with the judging of any event will be asked to leave the show ring area.

5. Release of Exhibits – No exhibit shall be released until 7:00 a.m. Wednesday, August 7, except livestock as listed in the schedule. All exhibits in the 4-H Building must be picked up between 7:00 a.m. and 10:00 a.m., Wednesday, August 7. Open Class exhibits in the South Exhibition Hall must be picked up between **5:00 p.m. and 7:00 p.m., Wednesday, August 7. The 4-H Fair Show Management will not be responsible for exhibits left after 7:00 p.m., August 7.** Removal of any exhibit before the designated time will cause the forfeiture of award money. Early removal requires a written approval from the affected Department Head Superintendent or Department Extension contact person.

6. Rule Violation – A report of a rule violation may be communicated by any means to a Larimer County Extension staff person or Superintendent with responsibility for that particular class or area. All reports regarding conduct or activity during the County Fair shall be made immediately. Any reports of violations of Fair rules will be promptly, impartially, and fully investigated. **The identity of the individual(s) making reports of possible violations or protests and the identity of individuals against whom allegations have been made will be confidential and only revealed as is necessary to investigate the allegations and for any disciplinary hearings. Larimer County Extension**

staff person or Superintendent with responsibility for that particular class or area will communicate final decisions with appropriate parties.

7. Protest – A protest is an allegation that a specific rule of the Larimer County Fair has been violated and must be made in writing and be signed by the person making the protest (and signed by at least one adult). Such protest must set out the particular allegations in detail and state which specific Larimer County Fair rule has been violated on the Appeal Form. A protest must be accompanied by \$100.00 for protests. Said protest fee shall be paid in cash or check and will be returned if the protest is sustained. All protests shall be submitted to the Larimer County Extension staff person with responsibility for that particular class or area immediately after the occasion for such protest, up to 2 hours after the decision or incident being protested. No protest of the Judge's decision will be considered.

A review committee will be established to include the Larimer County Extension staff person with responsibility for that particular class or area, and 2 recruited Superintendents with knowledge of the issue/topic to support making an unbiased and informed decision.

A final decision will be made and communicated in writing to the protester and individual in question from the review committee. Any exhibitor, 4-H parent or legal guardian, or 4-H leader who violates any rule or regulation may be subject to forfeiture of all privileges, awards, and premiums and to such other penalty as agreed to by the Review Committee.

In the event that the exhibitor is not satisfied by the protest resolution, the exhibitor may appeal the protest resolution to the Fair Executive Committee. The appeal must be in writing, on an Appeal Form, and accompanied by a fee of \$100.00 in cash or check. The appeal shall plainly state the matter being appealed and shall be delivered to Larimer County Extension staff person with responsibility for that particular class or area within 2 hours of the protest resolution was communicated. The decision of the Fair Executive Committee is final. The fee(s) imposed above shall be refunded if the matter is resolved in favor of the person bringing the protest or appeal. The forms and policy further explain the protest and appeals procedure.

The Fair Executive Committee has the final and absolute opportunity to evaluate the appeal of review committee. Any exhibitor, 4-H parent or legal guardian, or 4-H leader who violates any rule or regulation may be subject to forfeiture of all privileges, awards, and premiums and to such other penalty as agreed to by the Executive Committee.

8. Unsportsmanlike Conduct – When an exhibitor, parent or leader is guilty of unsportsmanlike conduct and/or inhumane/unethical treatment of an animal, the privilege of that person to participate in future Larimer County Fairs may be revoked.

9. The use of marijuana and CBD in any display, food item, or exhibit is prohibited and shall be rejected. The exhibitor shall be referred to law enforcement.

10. Alcohol Restrictions: Pursuant to Colorado Statute 12-47-901(1)(h)(I), it is illegal to bring any outside alcoholic beverages onto the Larimer County Fairgrounds and Events Complex, including parking lots. Alcoholic beverages not purchased on the premises will be confiscated immediately and may result in fines and/or ejection from the premises.

Out of respect for the goals of the 4-H Youth Development Program and the Colorado 4-H Code of Conduct, alcoholic beverages are discouraged in the 4-H camping areas, Thomas M. McKee 4-H Youth and Community Building, and areas where 4-H animals are housed.

Instructions on How to Enter Open Class Exhibits

1. Access the 2019 Larimer County Fair Premium Book available online at:
<http://larimer.extension.colostate.edu/larimer-county-fair/>
2. Read the Fair Schedule located in the Premium Book.
3. Read the general information and rules starting on page 2.
 - A. Read Open Class Horticulture division rules, page 132.
 - B. Read Open Class Garden Flowers division rules, page 134.
 - C. Read Open Class Home Economics, Fine Arts, Photography & Creative Crafts division rules on page 136.
4. Locate Open Class Departments you wish to enter.
 - Horticulture, page 132
 - Garden Flowers, page 134
 - Baked Products, page 137
 - Canned & Dried Products, page 139
 - Needlework, page 142
 - Quilting, page 144
 - Spinning & Weaving, page 147
 - Machine Work, page 149
 - Fine Arts, page 151
 - Photography, page 153
 - Creative Crafts, page 155
5. Complete the Open Class Pre-Registration Form and send by e-mail or postal mail (information on entry form). Pre-Registration Form submitted after July 15 must be accompanied by \$5 late fee per department entered. Exhibitor number will be assigned by the Fair Office.
6. Take exhibit(s) to the Larimer County Fairgrounds (South Hall of the 1st National Bank Exhibition building) during check-in time for the exhibit(s). Park in the 4-H parking lot or Lot A or B.
Tuesday, July 30, 5:00 p.m. to 8:00 p.m. — Check-in Home Economics, Fine Arts, Photography and Creative Crafts
Thursday, August 1, 7:30 a.m. to 9:30 a.m. — Check-in Horticulture/Crops
Thursday, August 1, 7:30 a.m. to 10:45 a.m. — Check-in Garden Flowers
7. At check-in, arrive in time to receive your exhibitor number and exhibit identification tag(s). Complete the information on the I.D. tag and attach one tag to each exhibit. Take your exhibit(s) to the appropriate department in the South Exhibit Hall.
8. Viewing of judging is open to the public. You are welcome to listen and learn from the judges.
9. Please return to the Fairgrounds to pick up your exhibits on **Wednesday, August 7 between 5:00 p.m. and 7:00 p.m.** Collect any premiums and awards won. **If you are unable to pick up your exhibits that evening, please have someone else do it for you.**

Open Class Division

General Rules and Regulations

1. **Entries – Prior Pre-Registration Entry is required in all departments. All Pre-Registration Forms shall be received by the Larimer County Fair Office, 5280 Arena Circle, Ste #101, Loveland, CO 80538, by July 15. Entry Office closes at 6 p.m. on July 15. Postmarks, faxes, or internet pre-registration will be accepted only if posted on or before July 15.**

Exhibitors do not need to be Larimer County residents.

2. **Late Pre-Registration Forms** – Pre-Registration Forms received after July 15 are subject to a late charge of \$5.00/department, and subject to space availability in exhibit area. Please consult this booklet for information regarding rules and regulations for each department. **No Late Entries Taken After Department Check-In.**

3. **Check-In** – Open Home Economics, Fine Arts, Photography and Creative Crafts exhibits must be in place between 5 p.m. and 8 p.m. on Tuesday, July 30. Open Horticulture check in is 7:30 a.m. - 9:30 a.m. on Thursday, August 1. Open Garden Flower check-in is 7:30 a.m. - 10:45 a.m. on Thursday, August 1.

4. Exhibits shall be released between **5:00 p.m. and 7:00 p.m.** Wednesday, August 7. Removal of any exhibit before the designated time requires written approval from the Department Head Superintendent or Extension Agent contact and causes loss of any award money. Violation of this rule shall cause the exhibitor to forfeit any prize money due him or her. Exhibitors who are entered in another show and who wish an early release must furnish a copy of the entry blank to the department superintendent prior to check-in time.

5. All Exhibitor General Rules and Regulations apply to the Open Division and are available online at <https://larimer.extension.colostate.edu/larimer-county-fair/> specifically note the entries regarding Judging, Protests and Appeals, Rule Violations, and Thanking Award Donors.

6. **The use of marijuana or CBD in any display, food item, or exhibit is prohibited and shall be rejected. The exhibitor shall be referred to law enforcement.**

7. **Classes may be combined or divided at the discretion of the superintendents. If there are 3 or more items in a miscellaneous or “Any Other” class, a new class may be made.**

8. **Payment of Premiums:** Exhibitors who win a placing ribbon, i.e. Blue (1st), Red (2nd), or White (3rd), receive a cash award (premium). Exhibitors may collect payment for premiums and special other awards as follows:

Wednesday, August 7: 7 a.m. - 7 p.m.

Thursday, August 8: 9 a.m. - 4 p.m.

Friday, August 9: 8 a.m. - 12 noon

Premiums and special awards not collected before noon, Friday, August 9 will be forfeited. No Exceptions.

Premiums will be:

1st - \$2.00; 2nd - \$1.50; 3rd - \$1.00

Department OG

Open Class Horticulture

Division

Superintendent—Mitzi Davis
Extension Contact – Alison O'Connor

1. All exhibits in this department are subject to the general rules and regulations.
2. Exhibits must be checked in with the superintendent and in place between 7:30 a.m. - 9:30 a.m. on August 1.
3. Judging will start promptly at **10:00 a.m.**, Thursday, August 1, and is open to the public to hear judges' comments.
4. An exhibitor may not exhibit more than **one** entry of the same variety in the same class. If entering more than one variety, variety must be listed.
5. **Vegetable Critter Art (Classes 110 and 380)** – Made from any parts of vegetables, including stems, leaves and seeds. Not to exceed 12" x 12" x 12". Fastened with toothpicks only. No glue or tape. Judged on creativity.
6. Unworthy exhibits may be eliminated. Exhibits which do not follow the class description will be disqualified. Exhibits will be displayed and presented to the judge by superintendents and/or assistants in charge of this department.
7. Exhibits must remain on exhibit through Tuesday, August 6. If not removed by **7:00 p.m.**, August 7 they will be disposed of by Fair management.
8. Champions will be determined by points: First, 4 points; second, 3 points; and third, 2 points; times the number of entries in the class.
9. **Classes may be combined or divided at the discretion of the superintendents. If there are 3 or more items in a miscellaneous or "Any Other" class, a new class may be made.**
10. **The use of marijuana or CBD in any display, food item, or exhibit is prohibited and shall be rejected. The exhibitor shall be referred to law enforcement.**
11. Exhibitors in this Department shall make entry by Department Horticulture only to secure an exhibitor's number. **Do Not Make Entry For Each Individual Class On Your Entry Form.**
12. At check in time on August 1, your Department exhibitor's number will be given to you. At that time, each exhibitor will make out his or her own individual class entry tags and place them on their exhibits. A list of these entries should be given to the superintendent for checking. Lists and entry tags may be picked up at the Fair Office after **July 24**.
13. **Hot peppers have been moved to the end of judging. Tasting these peppers has resulted in residual heat in the mouth, making it difficult to taste/sample the entries from other classes.**
14. All 4-H members and other children are encouraged to enter vegetables in the Open Class Horticulture Show. **Classes 110 – 160 are specific for youth (ages 5 – 18). Youth are encouraged to enter in any other classes, as per their exhibits.**

15. **Payment of Premiums:** Exhibitors may collect payment for premiums and special cash awards. See Open Class Division General Rules and Regulations for schedule. Premiums and special awards not collected before noon Friday, August 9 will be forfeited. **No Exceptions.**

Premiums will be:
1st – \$2.00; 2nd – \$1.50; 3rd – \$1.00

Open Class Vegetables

Vegetables will be judged for "table use." Uniformity in size, shape and color are important. Please include variety name on tag.

Class

(Classes for youth only; ages 5 – 18)

110. Vegetable Critter Art – grown by exhibitor, made from vegetables or fruits, including the stems, leaves and seeds. Cannot exceed 12" in any dimension.

120. Beans, 9 pods, with stems (not more than 1" in length), any variety

130. Squash, 3 summer, zucchini or cocozelle type

140. Tomatoes, 5 cherry

150. Basil, 3 stalks, trimmed to 10"

160. Dill weed, 3 stems, no seeds, trimmed to 10"

170. Beans, 9 pods, with stems (not more than 1" in length), green, snap

180. Beans, 9 pods, with stems (not more than 1" in length), yellow, snap

190. Beets, 3 red table (topped to ½")

200. Beets, 3 any other variety (topped to ½")

210. Broccoli, 2 heads

220. Chard, 2 heads

230. Cabbage, 1 heads, any variety

240. Carrots, 3 (topped to 1")

250. Cucumbers, 3 pickling (4" to 5")

260. Cucumbers, 3 slicing

270. Eggplant, 2

280. Kohlrabi, 3, with tops & root, trim tops evenly ½" above ball, trim tap root ½" below ball

290. Lettuce, 2 heads

300. Kale, any variety, 2 bunches with 2 stalks per bunch, each bundled

310. Any other greens, 2 bunches

320. Onions, 6 green, bunched, tops may be trimmed

330. Onions, 3 round- or globe-type, white

340. Onions, 3 round- or globe-type, yellow

350. Onions, 3 round- or globe-type, red

360. Sweet Peppers, Bell type, 3

370. Sweet Peppers, Tapered type, 3

380. Vegetable Critter Art – ADULT – grown by exhibitor, made from vegetables or fruits, including the stems, leaves and seeds. Cannot exceed 12" in any dimension.

390. Potatoes, red, 3

400. Potatoes, any other variety, 3

410. Pumpkin, 1 small pie

420. Miniature Pumpkins, 3

430. Radishes, 6 (topped)

440. Rhubarb, 3 stalks, pulled, leaf cut to 1"

450. Squash, 3 summer, straight neck or crookneck

460. Squash, 3 summer, zucchini or cocozelle type

470. Squash, 3 summer, any other variety

480. Squash, Biggest Zucchini, by weight, stem trimmed to 1"

490. Winter Squash, 2 large, any variety

- 500. Winter Squash, 2 small, any variety
- 510. Tomatoes, 5 cherry
- 520. Tomatoes, plum or pear, 5
- 530. Tomatoes, 3 green
- 540. Tomatoes, 3 ripe
- 550. Any other vegetable, 3

Open Class Fruits

- 560. Apples, any variety, 5
- 570. Crabapples, 5
- 580. Currants, 1 cup, (8 oz.)
- 590. Grapes, 2 bunches, any variety
- 600. Plums, 5, any variety
- 610. Raspberries, 1 cup, (8 oz.)
- 620. Any other fruit

Herbs

- 630. Basil, 3 stems, trimmed to maximum of 10" (with leaves, in container of water)
- 640. Chives, 6 stems, trimmed to maximum of 10" (no flowers, in container of water)
- 650. Dill weed, 3 stems, with leaves, no seeds, trimmed to maximum of 10" (in container of water)
- 660. Dill, seed heads only, 2 (on paper plate)
- 670. Garlic, 3 bulbs
- 680. Hops, 3 stems, no longer than 12", bundled with a rubber band
- 690. Lavender, foliage only, 3 stems, trimmed to maximum of 10" (in container of water)
- 700. Lavender, flowers only, 6 stems, trimmed to a maximum of 10" (in a container of water)
- 710. Mint, 3 stems, trimmed to maximum of 10" (with leaves, in container of water)
- 720. Oregano, 3 stems, trimmed to maximum of 10" (with leaves, in container of water)
- 730. Parsley, 3 stems, trimmed to maximum of 10" (with leaves, in container of water)
- 740. Rosemary, 3 stems, trimmed to maximum of 10" (with leaves, in container of water)
- 750. Sage, 3 stems, trimmed to maximum of 10" (with leaves, in container of water)
- 760. Thyme, 3 stems, trimmed to maximum of 10" (with leaves, in container of water)
- 770. Any other herb, 3 stems, trimmed to maximum of 10" (with leaves, in container of water)

Hot Peppers

- 780. Peppers, Chili – Anaheim type, 3 (Limit 3 varieties per exhibitor)
- 790. Peppers, Chili – Jalapeno type, 3 (Limit 3 varieties per exhibitor)
- 800. Peppers, Chili - Cayenne type, 3 (Limit 3 varieties per exhibitor)
- 810. Peppers, Chili – Poblano type, 3 (Limit 3 varieties per exhibitor)
- 820. Peppers, Chili - Large, hot, 3 (Limit 3 varieties per exhibitor)
- 880. Peppers, Chili - Small, hot, 3 (Limit 3 varieties per exhibitor)
- 830. Hottest Pepper, any size, 1 (limit 3 varieties per exhibitor)

Champion Open Class Garden.....Rosette
 Reserve Champion Open Class Garden.....Rosette

Special Awards

- Champion Open Horticulture Exhibitor
Poudre Valley Coop, Gordon Ledall, Fort Collins
- Reserve Champion Open Horticulture Exhibitor
Larimer County Master Gardeners, Alison O'Connor, Larimer County
- Hottest Pepper Exhibitor
The Koski Family, Wellington
- Vegetable Critter Art Exhibitor – Youth
The Davis Family, Fort Collins
- Vegetable Critter Art Exhibitor – Adult
Larimer County Farmers' Market, Alison O'Connor, Larimer County
- Biggest Zucchini Exhibitor
Fort Collins Nursery, Dan Booth, Fort Collins
- Best of Show – Herb Division
Dick Christensen, Fort Collins

Department OJ Open Class Garden Flowers

Co-Superintendents – Lorrie Wellman & Tony Koski
Extension Contact–Alison O'Connor

1. **Prior pre-registration is required by July 15.** Substitution between classes in this department will be allowed provided the substituted exhibit meets the class description.
2. Exhibits are governed by the general rules.
3. Exhibitors in this department shall make entry by Department Garden Flowers only to secure an exhibitor's number. **Do Not Make Pre-Registration For Each Individual Class.** At check-in time, you will be given an exhibitor's number and you will make out your own tags for flowers in each class that you have brought. The entry list should be filled out completely. The exhibitor is responsible to give this list to the superintendent for entry into classes. Items not identified on entry list when turned in are ineligible for judging. Lists and entry tags may be picked up at the Fair Office after **July 24.**
4. **Please write variety of the flower, if known, on the entry tag.**
5. All exhibits must be in place between 7:30 a.m. and 10:45 a.m., Thursday, August 1. Late entries will be disqualified.
6. Judging will start promptly at 11 a.m. on Thursday, August 1. Judging is open to the public.
7. Exhibits must remain on exhibit through Tuesday, August 6. If not removed between 5:00 p.m. and **7:00 p.m.** August 7, they will be disposed of by the Fair management.
8. Exhibitors may keep flowers in good condition during the Fair by replacing flowers when necessary.
9. Exhibits which do not follow class description will be disqualified. Entering exhibits in the proper class is the exhibitor's responsibility.
10. If a class specifies one variety, **all** blooms, stems, or spikes **must be** one color.
11. If a class requires more than one bloom, stem, or spike, but does not specify "one variety," they may be all one color or a mixture of colors.
12. **The use of marijuana or CBD in any display, food item, or exhibit is prohibited and shall be rejected. The exhibitor shall be referred to law enforcement.**
13. Exhibitors may enter only one entry in each class.
14. In cut flower classes, foliage above water line should remain on stem. Multiple stems show best if cut at same length.
15. **Champions** - The Grand Champion Garden Flower Exhibit Department will be picked by the Judge from Classes 110 - 740. The County Flower Champion and Reserve Champion (Classes 110 - 470), the Best Flower Arrangement (Classes 480 - 540), the Best Houseplants (Classes 550 - 610), Best in Classes for Children (Classes 620 - 660, and Best in Classes for Youth (Classes 670 - 710) will be determined by points received: first, 4 points; second, 3 points; third, 2 points. **In the event of a tie based on the points**

awarded, the award will be divided equally among winners. A Special Award will be presented in each table setting class.

16. All flowers used, **including in the table settings classes, must be grown by the exhibitor. Store-bought flowers are prohibited.**

17. Materials used in dried arrangements must be collected and dried by exhibitor.

18. Table settings must be for 2 people and displayed on a card table **or similar (measuring less than 4' x 4')** provided by the exhibitor. The exhibit must include: a. Theme (state a chosen theme and include a menu and table setting appropriate to that theme); b. Table covering: table cloth, **OR** placemats (**not both**); c. Napkins; d. Dishes, cutlery, drinking vessel **and all items needed as per the menu**; e. Fresh flower arrangement, **with flowers and greens grown by the exhibitor**, proportioned to table, not taller than 10"; f. No food or drink.

19. With the exception of houseplants (classes 530 – 570), plants must be grown by the exhibitor for at least 2 months or in the container for 2 months.

20. Patio container size may not exceed 15" wide or long. Containers will be judged based on color, creativity, overall health, and display. Containers shall display plant materials only. Container flowers must be in possession of the exhibitor for at least 2 months, spring planting permitted.

21. Payment for Premiums: Exhibitors may collect payment for premiums and special cash awards won. See Open Class Division General Rules and Regulations for schedule. Premiums and special awards not collected before noon Friday, August 9 will be forfeited. **No Exceptions.**

Premiums will be:

1st – \$2.00; 2nd – \$1.50; 3rd – \$1.00

Garden Flowers

Class

110. Hybrid tea rose, 1–8" stem or longer
120. Rose, 3 varieties, 1 each–8" stem or longer, specify variety (i.e. floribunda, tea rose)
130. Rose, shrub rose, 2 stems, 1 variety
140. Gladiola, single spike
150. Zinnias, Giant, 5 stems
160. Zinnias, Pompom, 3 stems, **mixed colors**
170. Phlox, 1 stem
180. Marigold, large, one variety, 5 stems–flowers over 2"
190. Marigold, dwarf, one variety, 5 stems
200. Pansies, 5 stems
210. Petunias, 3 stems, **any flower size**
220. Calendulas, one variety, 5 stems
230. Snapdragons, 5 spikes, standard and knee high
240. Snapdragons, 5 spikes, **miniature**
250. Sweetpeas, annuals only, 5 stems only, no vines
260. Shasta Daisies, 5 stems
270. Cosmos, 5 stems
280. Sunflower, 5 stems
290. Rudbeckia, 3 stems
300. Echinacea, 3 stems
310. Chrysanthemums, 3 sprays
320. Yarrow, **one variety**, 5 stems
330. Columbine, 3 stems
340. Dahlias, 2-4", **1 stem**
350. Dahlias, 4-6", **1 stem**

- 360. Dahlias, over 6", 1 stem
- 370. Dahlias, 1 stem floating, Dahlia Water Lily (no stem; free floating in a clear bowl or brandy snifter – no artificial enhancements, such as marbles, are permitted; displayed with at least 2 detached dahlia leaves)
- 380. Daylily, same variety, 3 stems
- 390. Coleus, same variety, 3 stems
- 400. Any other flower, not previously listed, 3 stems

Arrangements for Special Purposes

Arrangement materials must be products of the exhibitor's home garden.

Class

- 410. Centerpiece for dinner table, floral only, fresh flowers only, size proportionate to formal dining table, 10" maximum height
- 420. Basket arrangement, fresh flowers and natural fiber basket material only
- 430. Ikebana arrangement, floral only, fresh flowers only (floral pin frogs okay)
- 440. Coffee table arrangement, floral only, 12" maximum height
- 450. Themed flower arrangement, any media, arrangement must be at least 75% fresh plant material (adornments and embellishments permitted to reinforce the theme).
- 460. Miniature arrangement in any media (no larger than 5" x 5")
- 470. Fresh Flower Arrangement or Bouquet, in water

Patio Container

Class

- 480. Patio container display (see rule #20); plants only, no hanging baskets; container size may not exceed 15" wide or long; all plants must be in possession of the exhibitor for 2 months (spring planting permitted).

Houseplants

- 490. Dish or Fairy Garden, with living plants, in owner's possession for 6 months
- 500. Houseplants, 6" and under inside measurement of container (should be started by exhibitor or in exhibitor's home for at least 6 months)
- 510. Houseplants, greater than 6" inside measurement of container (should be started by exhibitor or in exhibitor's home for at least 6 months)
- 520. Houseplants, succulents or cactus only, any size pot (should be started by exhibitor or in exhibitor's home for at least 6 months)
- 530. African Violets (should be started by exhibitor or in exhibitor's home for at least 6 months)
- 540. Orchid (must be flowering, in exhibitor's possession and cared for at least 6 months)
- 550. Terrarium display, with living plant material
- 560. Fairy garden, with living plant material

Classes for Children

Ages 5 Through 12

- 570. Mug arrangement, fresh flowers only
- 580. Fairy Garden
- 590. Holiday arrangement, exhibitor's choice of holiday
- 600. Fresh flower arrangement

Classes for Youth

Ages 13 Through 18

- 610. Miniature arrangement in any media (no larger than 5' x 5")
- 620. Fresh flower arrangement
- 630. Dish or Fairy garden
- 640. Terrarium display, with living plant material

Table Settings

Please refer to Rule #18 for information regarding table settings; flowers must be grown by the exhibitor.

- 650. Table setting for two (Ages 5 through 12)
- 660. Table setting for two (Ages 13 through 18)
- 670. Table setting for two (Adult)

Special Awards

- Grand Champion Garden Flower Exhibit
Loveland Garden Center & Nursery, Kevin & Debbie
Weakland, Loveland
County Flower Champion
Gulley Greenhouse, Jim & Jan Gulley, Fort Collins
County Flower Reserve Champion
Palmer Flowers, Michelle, Fort Collins
Best Flower Arrangement
Plantorium Greenhouse & Nursery, Fort Collins
Champion Houseplant
Bath Garden Center & Nursery, Sara Salzman, Fort Collins
Outstanding Children's Exhibit
Rowes Flowers, George & Clint, Loveland
Outstanding Youth Exhibit
Rowes Flowers, George & Clint, Loveland
Best Table Setting - Children 5 to 12
Walrus Ice Cream, Lisa Paugh, Fort Collins
Best Table Setting – Youth 13 to 18
Walrus Ice Cream, Lisa Paugh, Fort Collins
Best Table Setting - Adult
Walrus Ice Cream, Lisa Paugh, Fort Collins
Special Awards
Chick-fil-A, Timnath

Open Class

Home Economics, Fine Arts, Photography, Creative Crafts

(Extension Contact–Emily Alligood)

1. Prior pre-registration is required. Pre-Registration Forms are due in the Larimer County Fair Office, 5280 Arena Circle, Loveland, CO 80538, on or before July 15. **Late Pre-Registration Forms** - Entry forms received after July 15 are subject to a late entry fee charge of \$5.00/department, and to space availability in exhibit area. Entry office closes at 6 p.m. on July 15. Postmarks, faxes or internet pre-registration will be accepted only if posted on or before July 15.

2. Exhibitors in this department shall make entry by each Department Only – **Baked Products, Canned & Dried Products, Needlework, Quilting, Spinning & Weaving, Machine Work, Fine Arts, Photography, and Creative Crafts.** At check-in time, each exhibitor will be given an exhibitor's number to place on exhibitor tags for each item. Take each entry to the proper department to be recorded in the superintendent's book. A list of these entries should be given to the superintendent. Lists and entry tags may be picked up at the Fair Office after July 24.

3. All products exhibited must have been prepared since August 1, 2018 except for quilts. Exhibits can be entered only once.

4. Any article may be tested to the satisfaction of the judges. All articles and garments entered must be clean.

5. Exhibitor should be familiar with General Rules of the Fair.

6. Children's age is determined as of December 31, 2018.

7. Only one entry will be accepted in each class from each exhibitor except Fine Arts, Photography, and Spinning and Weaving. No award money will be awarded if the product is not worthy. No Champion or Reserve Champion will be awarded if the exhibit is not worthy. Special Awards will be given at the judges' discretion. Premiums will be paid from the records in the department judge's book.

8. All awards will be chosen at the discretion of the judge(s) in each department.

9. All exhibits must remain on exhibit for the entire Fair, regardless of whether or not award is given.

10. All Open Class Home Economics, Fine Arts, Photography, and Creative Crafts exhibits must be entered between 5 p.m. and 8 p.m. on Tuesday, July 30. Judging will begin at 8:30 a.m. on Wednesday, July 31, for Baked Goods, Canned Products, Creative Crafts, Needlework, Quilts, Spinning & Weaving, and Machine Work; 10:00 a.m. for Fine Arts. Photography will be judged Thursday, August 1, beginning at 5:00 p.m.

11. Viewing of judging is open to the public.

12. Exhibits will be checked out between **5:00 p.m. and 7:00 p.m.** on August 7.

13. The use of marijuana or CBD in any display, food item, or exhibit is prohibited and shall be rejected. The exhibitor shall be referred to law enforcement.

14. Payment for Premiums: Exhibitors may collect payment for premiums and special cash awards according to schedule in Open Class Division General Rules and Regulations. Premiums and special awards not collected before noon Friday, August 9 will be forfeited. **No Exceptions.**

Premiums will be:

1st – \$2.00; 2nd – \$1.50; 3rd – \$1.00

Department OK

Baked Products

Superintendent – Amanda Johnston
Extension Contact – Emily Alligood

1. Viewing of judging is open to the public at 8:30 a.m. on Wednesday, July 31. **If determined appropriate by the judge, exhibits may be moved to a different class for competition.**
2. **To be accepted for entry, all exhibits must be:**
 - A. Products made in the home and entered in the name of the person who made it.
 - B. Brought in a clear plastic, or zip seal-type bag.
 - C. Completely cooled prior to entry and submitted on suitable, covered, heavy cardboard or disposable plate. **Pies may be submitted in any pie tin or plate, but dishware will not be returned unless arrangements are made during exhibit check-in.**
3. **No products that require refrigeration will be accepted.** No cream or cream cheese fillings will be accepted. Sour cream or yogurt may be an ingredient in a baked product. Butter cream frosting is acceptable.
4. **All entry tags must be attached to exhibit, and paper work completed, before taking exhibit to department entry table.**
5. **All items containing nuts must be labeled: CONTAINS NUTS.**
6. Exhibitors may enter only **one item** in each class.
7. **Attach recipes to all products, written on 3" x 5" index card, listing measurements and ingredients only; directions are not needed.**
8. **Cake mix okay to use for exhibits entered in Decorated Cakes Category.**
9. Products "not for sale" must be marked by the exhibitor prior to entry and must be picked-up by 3 p.m. on Judging Day, July 31, or they will be sold. Cookies, sweet rolls, biscuits, candy, and muffins will not be saved for the exhibitor, except for the Cookie Jar and Gift Baskets. All proceeds from the Bake Sale items will go to the Open class exhibit area improvement.
10. Jars and Gift Baskets will not be opened for judging. (Classes 670, 680, 690)
11. **Important:** See Open Home Economics, Fine Arts, Photography, and Creative Crafts General Rules for additional requirements and information.
12. **The use of marijuana in any display, food item, or exhibit is prohibited and shall be rejected. The exhibitor shall be referred to law enforcement.**

Premiums will be:

1st – \$2.00; 2nd – \$1.50; 3rd – \$1.00

Yeast Breads

Class

110. Loaf White Yeast Bread
120. Loaf, any other yeast bread, identify variety
130. Dinner Rolls–exhibit of 4

140. Sweet or Fancy Rolls – exhibit of 4
150. Yeast Bread, gluten free

Quick Breads

Class

160. Cornbread (4 pieces, 3" x 3" each, no muffins)
170. Loaf Zucchini Bread
180. Loaf Banana Bread
190. Loaf Pumpkin Bread
200. Loaf of a Healthy Quick Bread (identify variety)
210. Coffee Cake (no yeast)
220. Batter Bread (no yeast), no shaping or kneading
230. Biscuits (no yeast), exhibit of 4
240. Fruit Muffins (identify kind), exhibit of 4 (no mini muffins)
250. Muffins, any other variety, (identify kind and/or ingredients, such as oatmeal, carrot, poppy seed, etc.), exhibit of 4 (no mini muffins)
260. Scones, exhibit of 4
270. Loaf Quick Bread – Gluten Free (identify variety)
280. Muffins – Gluten Free, **exhibit of 4** (identify variety)

Cakes–Whole Cakes

Display on heavy, covered cardboard, not more than 2" larger than cake; must use clear plastic bag covering for un-iced cakes.

Class

290. Novelty Cake–iced or not iced (identify variety, such as oatmeal, carrot, fruit, applesauce, etc.)
300. Angel Food Cake–no icing
310. Chiffon Cake–iced or not iced
320. Bundt Cake (identify variety)
330. Pound Cake (identify variety)
340. Cupcakes, iced, exhibit of 4
350. Cupcakes, iced – Gluten Free, exhibit of 4

Decorated Cakes

Decorated cakes must be left for exhibit. No cake forms are allowed. Fondant covered cakes must show additional cake decorating techniques. Display on heavy, covered cardboard, **not more than 2"** larger than cake. Maximum height for all cakes is 14". Cakes will be judged on creativity, techniques, and overall appearance. **Do not put a cover on the cake.**

Class

360. Decorated Cake – Junior (13 years and under, as of December 31, 2018)
370. Decorated Cake – Teenage (14 years to 18, as of December 31, 2018)
380. Decorated Cake – Adult
390. Fondant Decorated Cakes – Adult
400. Fondant Decorated Cakes – Youth under age 18, as of December 31, 2018
410. Cupcakes, decorated – Youth under age 18, as of December 31, 2018 (must all be edible) exhibit of 4
420. Cupcakes, decorated – Adult (must all be edible) exhibit of 4

Pies

Pies must have TWO crusts or a lattice top, **with the exception of class #490, which must have a crumb topping.** Any pie tin or plate may be used, but will be disposed of if arrangements are not made during exhibit check-in to pick up dishware after judging.

Class

430. Cherry Pie
440. Apple Pie
450. Fruit and Rhubarb Pie (identify variety)
460. Any Other Single Fruit or Berry Pie (identify kind)

470. Mixture of Fruits and/or Berry Pie (identify variety)
 480. Crumb topping Fruit Pie (identify variety)
 490. Hand Pie – Fruit or Berry (identify variety), **exhibit of 4**

Cookies

Exhibit of four of one kind – must leave entry for display. **No** “No Bake” cookies.

Class

500. Peanut Butter Cookies
 510. Peanut Butter Cookies, **Junior** (age 13 years & under, as of December 31, 2018)
 520. **Sugar Cookie, cut out, iced**
 530. **Sugar Cookie, cut out, iced, Junior** (age 13 years & under, as of December 31, 2018)
 540. Oatmeal Cookies – drop
 550. Oatmeal Cookies, **Junior** (13 years & under, as of December 31, 2018)
 560. Chocolate Chip Cookies – drop
 570. Chocolate Chip Cookies – drop, **Junior** (13 years & under, as of December 31, 2018)
 580. **Snickerdoodle Cookies**
 590. **Snickerdoodle Cookies, Junior** (age 13 years & under, as of December 31, 2018)
 600. Bar Cookies, not iced
 610. Bar Cookies, not iced, **Junior** (age 13 years & under, as of December 31, 2018)
 620. Brownies, no icing
 630. Brownies, no icing, **Junior** (13 years & under as of December 31, 2018)
 640. Refrigerator Cookies–sliced
 650. Nutritious Cookie
 660. Any Other Cookie (identify variety) (**No** “No-Bake” cookies)

Cookie Jar or Gift Baskets

Entire exhibit must be left on display.

Class

670. Cookie Jar or Gift Basket – A container of assorted cookies made from at least **three** different varieties of batters and doughs. The container **must be filled** and should contain not less than **four** cookies of each variety; must be individually wrapped in clear wrap (not colored). The container must be suitable for use as a cookie jar or basket. Entire entry must not exceed 12” x 12” x 12” in height, width and depth. Judging basis: 55% on variety and 45% on creativity and packaging. Entries will not be opened or tested. Identify variety of cookies on 3” x 5” index cards.
 680. Scone Gift Basket – A variety of **three** different scones, **two** scones of each variety; must be individually wrapped in clear wrap (not colored), and packaged for giving. Entire entry must not exceed 12” x 12” x 12” in height, width and depth. Judging will be based on 55% scone variety and 45% on creativity and packaging. Entries will not be opened or tested. Identify variety of scones on 3” x 5” index cards.
 690. Muffin Gift Basket - A variety of **three** different muffins; **two** muffins of each variety; must be individually wrapped in clear wrap (not colored), and packaged for giving. Entire entry must not exceed 12” x 12” x 12” in height, width and depth. Judging will be based on 55% muffin variety and 45% on creativity and packaging. Regular sized muffins; **no** mini muffins. Entries will not be opened or tested. Identify variety of muffins on 3” x 5” index cards.

Candy

Entries must consist of 4 pieces on a disposable plate in a zipper seal-type bag. No entries requiring refrigeration will be accepted.

Class

700. Fudge, Chocolate, 1” pieces
 710. Fudge, Any other variety, 1” pieces
 720. Brittles
 730. Any Other Candy, 1” pieces (identify ingredients)

Baked Food Specialties

Class

740. Baked Goods Sweetened Entirely With Honey. (Any baked product: cake, cookies, bread, rolls, etc. sweetened entirely with honey.)
 750. Holiday Baked Product–(All Holidays) (cakes, cookies, breads, etc.) Identify product.
 760. International or Ethnic Baked Product – (cakes, cookies, breads, etc.) Identify product variety and country of origin.

Gingerbread House

Entire display no larger than 14” x 14” x 14” tall. Decorations will consist of icing, candy, etc. **No Non-Food Items** to be used in house construction or decorating. No house forms to be used. Must be made from gingerbread. All pieces should be hand cut. Judging will consider utilization of decorating techniques and originality.

Class

770. Gingerbread House
 780. Gingerbread House - **Junior** (13 years and under, as of December 31, 2018.) Same rules as above.

Sugar-Free Baked Products

Class

790. Sugar-Free Baked Product - Any product made entirely free of beet or cane sugar or honey. Identify sweetener, if used. Attach recipe and identify product.

Special Awards

A Grand and Reserve Grand Champion and eleven Champions and eleven Reserve Champion ribbons will be awarded for outstanding exhibits. It shall be at the judges' discretion to withhold awards, if exhibits do not merit an award.

Best of Show - Open Baked Products

Alpine Cabinet Company, Dick, Scott & Bill Chinn, Timnath

Outstanding Exhibit - Open Baked Products

Alpine Cabinet Company, Dick, Scott & Bill Chinn, Timnath

Outstanding Exhibit - Open Baked Products

Alpine Cabinet Company, Dick, Scott & Bill Chinn, Timnath

Single Exhibitor with the most Entries - Open Baked Products -

Alpine Cabinet Company, Dick, Scott & Bill Chinn, Timnath

Outstanding Children’s Exhibits – Open Baked Products

Jolene Lindsey, Loveland

Department OL Canned & Dried Products

Superintendent – Doreen Moore
Extension Contact – Edie McSherry

Green Beans

Hot Pack
Pressure Canned – Dial Gauge
25 minutes at 12 ½ lbs. at 5,000 feet
June 20, 2019

1. Judging is open to the public on July 31 at 8:30 a.m. Wine and Liqueur judging will be at **9:30 a.m.** July 31. Honey judging will be at **1:30 p.m.** on July 31. Judge will determine eligibility of exhibit at time of judging. **If determined appropriate by the judge, exhibits may be moved to a different class for competition.**

2. **Recipes are required for all canned and dried products.** The recipe **must** be affixed to the jar or container and **must** include **source of recipe (resource name, year published and page number or date accessed online and website link)**, ingredients, preparation instructions, method, time, temperature and source of recipe.

3. All **canned** products **must** be canned in standard brand name **clear, non-colored** glass canning jars (no mayonnaise jars, etc.) and canned since August 1, 2018 by the person in whose name they are entered. Jars should be in good condition with two-piece canning lids with band in good condition and new flat lid.

4. **To be considered for judging, all canned food entries must be canned in a boiling water canner or pressure canner.** All canned and dried foods must be preserved using recipes from resources which use USDA recommendations for processing. All recipes must be from the most current version of your recipe resource and use canning information from 1994 or later. Acceptable resources include, but are not limited to: The USDA, University Extension publications and pectin package inserts. All preserved foods must be processed using recommendations for a high altitude area. Check with your local Extension Office prior to canning for acceptable resources for research tested recipes and altitude adjustments. In Larimer County, call 970-498-6008.

5. Processes that are unacceptable and unsafe include: open kettle processing, inversion sealing, steam canning, paraffin sealed jellies/jams, pickles, jams and jellies not processed in a boiling water bath canner, water bath canning of low acid products (vegetables require pressure canning), and meat jerky dried from unsafe meats. CSU recommendations must be used for jerky to ensure safety.

6. All **canned** products must be labeled properly. Label must include the following information:

- name of product
- method of preparation (type syrup, style of pack)
- method of processing (i.e. water bath, pressure canner – indicate weighted or dial gauge)
- processing time, altitude, and pounds of pressure (p.s.i.)
- date canned (all entries must have been preserved since August 1, 2018)

Examples:

Sliced Peaches in Light Syrup
Raw Pack
Boiling Water Canner
Processed 40 minutes at 5,000 feet
August 30, 2018

7. Fancy pack of canned products with special cuts or designs will not be considered. No decorative displays on jars except gift packs.

8. Products canned using reusable lids will not be accepted.

9. All **dried** foods should be displayed in appropriate storage containers (clear glass jars with rust-free lids, heavy-weight plastic food –quality bags, vacuum-sealed plastic food bags, etc.).

10. All **dried** foods must be labeled properly. Label must include the following information:

- name of product
- pretreatment used, if any
- method of drying (over or dehydrator – solar drying **not** recommended)
- total drying time
- date dried (all entries must have been preserved since August 1, 2018)
- Jerky recipes must use Colorado State University recommended procedures. Deer and elk meat are to include a copy of test results for Chronic Wasting Disease. Test is mandatory.

Example:

Apricots
Ascorbic Acid Dipped
Dehydrator Dried, 8 hours
July 15, 2019

11. Exhibitors are limited to one entry per class.

12. Canned products may be opened and tasted per discretion of the judge. Dried Foods may be handled by the judge to determine stage of doneness.

13. Commercially produced or canned or dried products produced under the Cottage Foods Act will not be considered for judging.

14. The use of marijuana in any display, food item, or exhibit is prohibited and shall be rejected. The exhibitor shall be referred to law enforcement.

15. See Open Class home Economics, Fine Arts, Photography and Creative Crafts General Rules for additional information.

Premiums will be:

1st – \$2.00; 2nd – \$1.50; 3rd – \$1.00

Canned Products

Canned Fruits

Class

- 110. Apricots
- 120. Red Cherries, sour and pitted
- 130. Peaches
- 140. Pears
- 150. Fruit Pie Filling
- 160. Applesauce
- 170. Any other fruit sauce
- 180. Tomatoes, sauce or paste
- 190. Tomatoes, whole, or stewed
- 200. Tomato Juice
- 210. Any other fruit juice
- 220. Any other fruit

Canned Vegetables

Class

- 230. Beans, green or yellow
- 240. Beets, red.
- 250. Corn
- 260. Any other vegetable

Pickled Products, Sauces and Condiments

Cucumbers

Class

- 270. Dill Pickles
- 280. Sweet Pickles
- 290. Bread and Butter Pickles

Vegetables

Class

- 300. Pickled Beans
- 310. Pickled Beets
- 320. Sauerkraut
- 330. Any other pickled vegetable (i.e. zucchini, cauliflower, peppers, mixed, etc.)

Fruit

Class

- 340. Any pickled fruit (i.e. watermelon, etc.)

Relish, Salsa and Chutney

Class

- 350. Cucumber Relish
- 360. Any other vegetable relish
- 370. Chutney
- 380. Fruit Salsa
- 390. Tomato or Vegetable Salsa

Sauces and Condiments

Class

- 400. Any pickled sauce or condiment

Gift Pack

Class

- 410. An assortment of 3 jars of any kind of pickled product **packed and labeled for giving**. Jars will not be opened, but will be judged on combination, color, and variety. **Each jar must be labeled** – see Rules 2 and 6.

Jellies, Jams and Preserves

Jelly

Class

- 420. Apple
- 430. Crabapple
- 440. Grape
- 450. Mint
- 460. Pepper
- 470. Plum
- 480. Any other kind

Jam

Class

- 490. Apricot
- 500. Peach
- 510. Blueberry
- 520. Raspberry
- 530. Strawberry
- 540. Strawberry Rhubarb
- 550. Combination of Fruit (2 or more)
- 560. Any other kind

Preserves

Class

- 570. Cherry
- 580. Strawberry
- 590. Combination of Fruit (2 or more)
- 600. Any other kind

Other

Class

- 610. Fruit Butter
- 620. Conserve
- 630. Marmalade
- 640. Fruit Syrup

Gift Pack

Class

- 650. An assortment of 3 jars of jam, jelly, preserve, fruit butter, fruit syrup, conserve or marmalade **packed and labeled for giving**. Jars will not be opened, but will be judged on combination, color, and variety. **Each jar must be labeled** – see Rules 2 and 6.

Dried Products

Class

- 660. Fruit (six pieces of one kind)
- 670. Vegetables (1/2 cup of one kind)
- 680. Herbs (1/2 cup of one kind)
- 690. Fruit Leather (six pieces of one kind, 2" x 5")
- 700. Dried Jerky (six pieces of one kind. (Must follow current CSU recommendations.) Recipe must accompany exhibit.
- 710. Gift Pack of Dried Herbs (4 varieties) **packed and labeled for giving**. Containers will not be opened. **Each container must be labeled** – see Rules 2 and 10.

Youth Division

(13 years and under as of December 31, 2018)

Class

- 720. Jelly, any kind
- 730. Jam, any kind
- 740. Canned Fruit
- 750. Canned Vegetable
- 760. Pickle or Pickled Product
- 770. Dried Product
- 780. Gift Pack (same as Class 650)

Homemade Wine & Liqueurs

1. Exhibitors must be 21 years of age and over.
2. Each homemade wine entry shall consist of one standard wine bottle (750 ml or 5th bottles). Colored glass is acceptable, but the glass must be translucent.
3. Homemade liqueurs entry shall consist of one bottle, approximately 1 pint in re-closable bottles. Colored glass is acceptable, but the glass must be translucent. Do not use jars.
4. **Red, White and Blush wines must be made from grapes.**
5. Label bottles with fruit used and the year fermentation originated.
6. Entries will be opened for inspection and tasted only by the judge.
7. Exhibitors are limited to one entry per class.

Homemade Wines

Class

- 790. Red, Dry
- 800. White, Dry
- 810. Blush Rosé
- 820. Fruit
- 830. Sweet Dessert
- 840. Port
- 850. Mead
- 860. Specialty Wine (Flavored Wine)

Homemade Liqueurs

Class

- 870. Fruit
- 880. Non-Fruit (chocolate, coffee, etc.)

Honey

1. Exhibitors are limited to one entry per class.
2. Honey produced under the Cottage Foods Act will be accepted.
3. Liquid or Creamed Honey Exhibits shall be contained in ½ pint or pint clear, non-colored glass canning jars with a ½ inch headspace.
4. Liquid or Creamed Honey Exhibits must state the date processed on the label.

Class

- 890. Comb, 1 square or round section
- 900. Chunk Honey, 1 pint glass canning jar
- 910. Liquid Honey - Light
- 920. Liquid Honey - Dark
- 930. Creamed Honey
- 940. Infused Honey

Special Awards

A Grand and Reserve Grand Champion and Nine Champions and Nine Reserve Champion ribbons will be awarded for outstanding exhibits.

Grand Champion Canned Products Exhibit

Larimer County Farmers' Market, Alison O'Connor, Fort Collins

Outstanding Open Class Canned Products Exhibit

Larimer County Farmers' Market, Alison O'Connor, Fort Collins

Outstanding Wine/Liqueur Exhibit

Hops & Berries, Taylor Caron, Fort Collins

Outstanding Wine/Liqueur Exhibit

Wilbur's Total Beverage, Wines & Spirits, Fort Collins

Best Honey Exhibit – Liquid Honey

Northern Colorado Beekeepers Association, Tim Hardy, Berthoud

Best Honey Exhibit – Comb

Northern Colorado Beekeepers Association, Tim Hardy, Berthoud

Department OM Needlework

Superintendents - Kara Rudnick
Extension Contact – Emily Alligood

Needlework Rules

1. Viewing of judging is open to the public July 31, beginning at 8:30 a.m.
2. All articles entered in this department can be entered in the Larimer County Fair only once. Articles must be finished since August 1, 2018.
3. All articles entered must be clean and blocked.
4. Only one entry per exhibitor will be accepted in each class.
5. All work must be done by exhibitor in all entries.
6. Articles that have name labels or “created by” tags need to have these tags or labels removed or covered.
7. All articles will be judged on **workmanship, design** and **suitability** to purpose.
8. **Wall hangings must be covered with backings and be finished and ready to hang.**
9. Wall hangings will be measured by the counted work not including the matting &/or frame.
10. **All Counted Work must include an index card stating the length and width of the worked area along with the stitch count.**
11. Children's age determined by their age as of December 31, 2018.
12. See Open Class Home Economics, Fine Arts, Photography and Creative Crafts General Rules for additional information.
13. On an attached 3” x 5” card for Children, age 13 and under, describe what the child completed and what someone else did.
14. **Machine embroidery is not accepted and will not be judged; the embroidery classes are for hand embroidery.**
15. **The Felting/Fulling category is for the creating of felt by using a wet felt or needle felt method.**

Premiums will be:

1st – \$2.00; 2nd – \$1.50; 3rd – \$1.00

Embroidery Articles (No Machine Embroidery)

Class

- 110. Home Accessory Item (pillowcases, luncheon cloths, etc., not including wall hangings)
- 120. Wall hanging or pictures
- 130. Candlewicking Article or Punch Embroidery Article
- 140. Beaded Stitchery
- 150. Any Crewel Work Item
- 160. Any Other Embroidery Article, not listed

Counted Work

Class

- 170. Wall Hanging, under 9” x 6”
- 180. Wall Hanging, larger than 9” x 6” and under 12”x16”
- 190. Wall Hanging, larger than 12” x 16”
- 200. Home Accessory Item
- 210. Holiday Ornament
- 220. Sampler, must include numbers and/or letters
- 230. Any Item, 18 count or less per inch
- 240. Any Item, 20 to 27 count per inch
- 250. Any Item, 28 count or more per inch
- 260. Any other Counted Work Item, not listed

Canvas Work

Class

- 270. Wall Hanging, any size
- 280. Sampler, variety of stitches
- 290. Any Other Canvas Work, not listed

Felting/Fulling

Class

- 300. Any Hand Knit or **Hand Crocheted Item** Felted/fulled
- 310. Needle Felt Item
- 320. Wet Felt Item

Miscellaneous

Class

- 330. Any Machine Knit Item
- 340. Rugs, other than felted
- 350. **Loom Knitting**
- 360. Any Tatting Item
- 370. Any Other Needlework, not listed
- 380. Any Other Felted Item not listed

Crochet

Class

- 390. Afghan or Bedspread, larger than 48” x 66” and under 54” x 72”
- 400. Baby Afghan
- 410. Afghan Granny Square
- 420. Adult Sweater
- 430. Child or Infant garment
- 440. Doilies
- 450. Home Accessory Item
- 460. Toys or Novelty Items
- 470. Apparel Accessory
- 480. Any Crochet Item, original design
- 490. Any Other Crochet Item, not listed

Hand Knitting

Class

- 500. Afghan, larger than 48” x 66”, and under 54” x 72”
- 510. Baby Afghan
- 520. Adult Sweater
- 530. Adult Vest
- 540. Child or Infant Garment
- 550. Socks or Gloves
- 560. Scarves, any shape, smaller than 24” wide and a minimum of 36” in length
- 570. Mittens or Hats
- 580. Shawls, any shape, larger than 24” wide and a minimum of 36” in length
- 590. Any Hand Knit Item, original design
- 600. Any other Hand Knit item, not listed

Individuals Over 60

Class

- 610. Stitchery Item
- 620. Crochet Item
- 630. Home Accessory Item
- 640. Knit Item

Individuals Over 70

Class

- 650. Any Item in the Department

Individuals –7 years and under

Class

- 660. Stitchery Item
- 670. Crochet or Hand Knit Item
- 680. Felted or Fulled Item
- 690. Any Other Item

Individuals–8 years to 13 years

Class

- 700. Stitchery Item
- 710. Counted Cross Stitch Item
- 720. Crochet Item
- 730. Hand Knit Item
- 740. Felted or Fulled item
- 750. Any Other Item

Individuals–14 years to 18 years

Class

- 760. Stitchery Item
- 770. Counted Cross Stitch Item
- 780. Crochet Item
- 790. Hand Knit Item
- 800. Felted or Fulled Item
- 810. Any Other Item

Special Awards

A Grand and Reserve Grand Champion and up to Twelve Champion and Twelve Reserve Champion ribbons will be awarded for outstanding exhibits.

Best of Show - Needlework Department

Mary Biggers, State Farm Insurance, Fort Collins

Reserve Best of Show - Needlework Department

Mary Biggers, State Farm Insurance, Fort Collins

Outstanding Embroidery Exhibit

Mary Biggers, State Farm Insurance, Fort Collins

Outstanding Knitting Exhibit

Mary Biggers, State Farm Insurance, Fort Collins

Outstanding Crochet Exhibit

Mary Biggers, State Farm Insurance, Fort Collins

Outstanding Any Age Youth Exhibit

Mary Biggers, State Farm Insurance, Fort Collins

Outstanding Senior Citizen Exhibit

Mary Biggers, State Farm Insurance, Fort Collins

Outstanding Open Needlework Individual - Ages 8 to 13

Ewe Bet Ranch, Teresa Beemer, Loveland

Outstanding Open Needlework Individual - Ages 14 to 18

Ewe Bet Ranch, Teresa Beemer, Loveland

Outstanding Hand Knit Exhibit

Northern Colorado Weavers Guild, Fort Collins

Outstanding Counted Work Class Exhibit

Remina Rudnick Memorial, Kara Rudnick Fort Collins

Outstanding Counted Work Class Exhibit

Pauline Deckinger Memorial, Kara Rudnick, Fort Collins

Best in Show Hand Knit Item

Front Range Knitting Guild, Mary Freitag Snapp, Greeley

Department ON

Quilting

Co-Superintendents – Susan Lynd & Ronelda Kraft
Extension Contact – Emily Alligood

1. Viewing of judging is open to the public Wednesday, July 31, beginning at 8:30 a.m. No discussion between exhibitors and judges will be allowed during judging process.
2. Articles can be entered in the Larimer County Fair only once. Articles must be finished since August 1, 2017.
3. All articles entered must be **clean and free of animal hair and odors including smoke.**
4. Only one entry will be accepted in each class per exhibitor. **In some cases the class will be determined by the perimeter of the quilt. The perimeter is the distance of the outside edges.**
5. All work must be done by the exhibitor. **An exception is for quilts that have been quilted by others. These quilts have their own division and classes.**
6. **All name tags and labels need to be covered or removed.**
7. Articles will be judged on **workmanship, design and suitability** to purpose.
8. **Ages of the exhibitor for youth and senior divisions will be their age on December 31, 2018.**
9. **If you require special hanging brackets or handling, we will try to accommodate your needs. However; if the superintendent does not feel the quilt can be handled or hung safely it will not be accepted.**
10. **Once a quilt is entered in a class it can only be moved to a different class if it was entered in an incorrect class and must be approved by the superintendent.**
11. **If the exhibitor or volunteer are unclear of the correct class for a quilt, they will request assistance from the superintendent for determination.**
12. See Open Class Home Economics, Fine Arts, Photography and Creative Crafts General Rules for additional information.

Definitions:

1. **Art Quilts are designed and created as textile art. Since art quilts are not required to have binding, quilting or other standard judged techniques, they will be judged on creativity, workmanship and suitability of intent.**
2. **Wall-hanging quilts have the construction of traditional quilts, but, are intended to be hung as decoration.**
4. **Mixed technique quilts are for quilts that utilize more than one technique in fairly equal proportions. If the techniques are not in fairly equal proportions, the technique that has the most usage will be used to identify the class.**

Premiums will be:

1st – \$2.00; 2nd – \$1.50; 3rd – \$1.00

First-Time Quilting Exhibitor

Class

050. First quilt ever entered in the Larimer County Fair by exhibitor. **Note: Quilt must have been made within the last 2 years. Quilt will be judged on workmanship. Every exhibitor will get a ribbon. The purpose of this class is to encourage and help new quilters improve techniques. Quilt cannot be entered in any other class.**

Adult Division

Machine Quilted by Exhibitor

Machine Quilted on Standard Home Machine

Class

100. Perimeter is 320” or less (lap or twin)
110. Perimeter is 321” or greater (full, queen or king)

Machine Quilted on a Mid/Long-Arm Machine By Exhibitor

Class

120. Perimeter is 320” or less, Computerized Design
130. Perimeter is 320” or less, Free Motion Design
140. Perimeter is 321” to 380”, Computerized Design
150. Perimeter is 321” to 380”, Free Motion Design
160. Perimeter is 381” or greater, Computerized Design
170. Perimeter is 381” or greater, Free Motion Design

Senior Division

Machine Quilted by Exhibitor age 65+

Machine Quilted on Standard Home Machine

Class

180. Perimeter is 320” or less (lap or twin)
190. Perimeter is 321” or greater, (full, queen or king)

Machine Quilted on a Mid/Long-Arm Machine By Exhibitor

Class

200. Perimeter is 320” or less, Computerized Design
210. Perimeter is 320” or less, Free Motion Design
220. Perimeter is 321” to 380”, Computerized Design
230. Perimeter is 321” to 380”, Free Motion Design
240. Perimeter is 381” or greater, Computerized Design
250. Perimeter is 381” or greater, Free Motion Design

Youth Division

Under 14 Years of Age

Class

260. First quilt ever entered in the Larimer County Fair by exhibitor. **Note: Quilt must have been made within the last 2 years. Quilt will be judged on workmanship. Every exhibitor will get a ribbon. The purpose of this class is to encourage young quilters. Quilt cannot be entered in any other class.**
270. Perimeter is 150” or less (wall hanging size)
280. Perimeter is 151” to 320” (baby quilt or lap quilt)
290. Pillow, table runner, or accessories

14 to 18 Years of Age

Class

300. First quilt ever entered in the Larimer County Fair by exhibitor. Note: Quilt must have been made within the last 2 years. Quilt will be judged on workmanship. Every exhibitor will get a ribbon. The purpose of this class is to encourage young quilters. Quilt cannot be entered in any other class.

310. Perimeter is 150" or less (wall hanging size)

320. Perimeter is 151" to 320" (baby quilt or lap quilt)

330. Pillow, table runner, or accessories

Adult Division & Senior Division

Machine Quilted by Someone Other Than Exhibitor

Adult Division

Class

340. Perimeter is 320" or less

350. Perimeter is between 321" to 380"

360. Perimeter is 381" or greater

Senior Division

Class

370. Perimeter is 320" or less

380. Perimeter is between 321" to 380"

390. Perimeter is 381" or greater

Hand Quilted by Exhibitor

Open to all ages. Can be machine-pieced.

Class

400. Perimeter is 320" or less

410. Perimeter is between 321" to 380"

420. Perimeter is 381" or greater

430. Whole cloth quilt any size

Hand Applique and/or Embroidered by Exhibitor

Open to all ages. Can be machine-pieced.

Class

440. Perimeter is 320" or less

450. Perimeter is between 321" to 380"

460. Perimeter is 381" or greater

Miscellaneous

Open to all ages. Can be machine-pieced

Machine Embroidered Quilts

Class

470. Original digitized designs by exhibitor, Perimeter is 150" or less

480. Original digitized designs by exhibitor, Perimeter is 151" or greater

490. Designed by exhibitor using pre-digitized single pattern, Perimeter is 150" or less

500. Designed by exhibitor using pre-digitized single pattern, Perimeter is 151" or greater

510. Digitized designs and predesigned quilt pattern, Perimeter is 150" or less

520. Digitized designs and predesigned quilt pattern, Perimeter is 151" or greater

Paper Pieced Quilts

Class

530. Paper pieced quilts (example: Judy Niemeyer, Jacqueline de Jonge, Bella Bella) Perimeter is 250" or less

540. Paper pieced quilts (example: Judy Niemeyer, Jacqueline de Jonge, Bella Bella) Perimeter is 251" or greater

Whole Cloth Quilt

Class

550. Whole cloth quilt, any size

T-Shirt Quilt

Class

560. T-shirt quilt, any size

Christmas Quilt

Class

570. Christmas Quilt (Any size; can include applique, embroidery, and/or embellishments)

Machine Appliqued Quilts

Class

580. Perimeter is 320" or less

590. Perimeter is between 321" – 380"

600. Perimeter is 381" or greater

Special Technique Quilts

Class

610. Non quilted Quilts (yo-yos, cathedral windows, crazy quilts, etc.)

620. Tied Quilt

630. Photo Copy Quilt or printed background from home computer

640. Stenciled, Colored, or Painted Quilt

650. Group Quilts, 2 or more individuals (pieced by exhibitor and quilted by someone else)

Smaller Quilts

Art Quilts

Quilts do not follow traditional piecing and/or quilting

Class

660. Pictorial (example: scenic nature scene portrayed with cloth and thread painting)

670. Abstract (collage, using fabric to "paint" a representation)

Wall-Hanging Quilts

All wall hangings must have a hanging sleeve

Class

680. Perimeter is less than 70", Pieced

690. Perimeter is less than 70", Appliqued

700. Perimeter is between 71" and 160", Pieced

710. Perimeter is between 71" and 160", Appliqued

Accessories

Class

720. Flat 2-Dimensional Quilted Items (i.e. table runners, bed runners, table toppers, placemats, etc.)

730. 3-Dimensional Items (i.e. bags, totes, pillows, etc.)

Special Awards

A Grand and Reserve Grand Champion and 16 Champion and 16 Reserve Champion ribbons will be awarded for outstanding exhibits.

Outstanding First Time Entry in Larimer County Fair

Quilt Together Group, President, Fort Collins

Outstanding Machine Quilted by Exhibitor – Adult Division

League of Northern Colorado Quilters, President, Fort Collins

Outstanding Machine Quilted by Exhibitor – Senior Division

League of Northern Colorado Quilters, President, Fort Collins

Outstanding First Time Quilt, Youth, Under 14 Years of Age

Cooley Family, Loveland

Outstanding First Time Quilt, Youth, 14 to 18 Years of Age

Wacky Women's Quilt Group, A. J. Erwine, Loveland

Outstanding Quilt – Quilted by Someone Other Than Exhibitor – Adult Division

The Fig Leaf, Laura Shotwell, Fort Collins

Outstanding Quilt – Quilted by Someone Other Than Exhibitor – Senior Division

The Fig Leaf, Laura Shotwell, Fort Collins

Outstanding Hand Quilted Item – Adult Division

Robbie Carpenter, Loveland

Outstanding Hand Appliqued Quilt

Women of the Cloth Quilters, Robbie Carpenter, Loveland

Outstanding Machine Embroidery Quilt

The Presser Foot, Fort Collins

Outstanding Paper Pieced Quilts

A. J. Erwine, Loveland

Outstanding Whole Cloth Quilt

League of Northern Colorado Quilters, President, Fort Collins

Outstanding T-Shirt Quilt

League of Northern Colorado Quilters, President, Fort Collins

Outstanding Christmas Quilt

Patti Lamfers, Loveland

Outstanding Machine Appliqued Quilt

League of Northern Colorado Quilters, President, Fort Collins

Outstanding Special Technique Quilt

Quilt Together Group

Outstanding Art Quilt

Rocky Mountain Creative Quilters, Julie Wilson, Fort Collins

Outstanding Wall Hanging Quilt

Patti Smith, Windsor

Outstanding Accessories

Stitches Quilting & Sewing, LLC, Sheila Honeycutt, Loveland

Judges Choice #1

League of Northern Colorado Quilters, President, Fort Collins

Judges Choice #2

League of Northern Colorado Quilters, President, Fort Collins

Judges Choice #3

League of Northern Colorado Quilters, President, Fort Collins

First Time Exhibits

The Sewing Circle, Fort Collins

Department OP

Spinning and Weaving

Co-Superintendents – Valorie Gathright, Connie Mechem
Extension Contact – Emily Alligood

1. Viewing of judging is open to the public July 31, beginning at 8:30 a.m.
2. All articles entered in this department can be entered in the Larimer County Fair only once. Articles must be finished since August 1, 2018.
3. All articles entered must be clean.
4. **Up to three entries per exhibitor** will be accepted in each class.
5. All work must be done by exhibitor in all entries.
6. Articles that have name labels or “created by” tags need to be removed or cover the tags or labels.
7. All articles will be judged on **workmanship, design** and **suitability** to purpose.
8. Handspun judging will **also be based on preparation of fiber, consistency, size, twist, and strength**. All must be appropriate to the purpose of the yarn.
9. Children's age determined by their age as of December 31, 2018.
10. See Open Class Home Economics, Fine Arts, Photography and Creative Crafts General Rules for additional information.
11. **The use of marijuana or CBD in any display, food item, or exhibit is prohibited and shall be rejected. The exhibitor shall be referred to law enforcement.**

Premiums will be:

1st – \$2.00; 2nd – \$1.50; 3rd – \$1.00

Hand Spun Yarn

1. All adult class skeins must be 2 ounces unless otherwise noted; youth class skeins must be 1 or more ounces. All skeins must be two or more ply, spun smooth and even unless otherwise noted. Yarn must be 100% of one fiber type except blends and novelty. Entries may be assigned to another class at the discretion of the judge or superintendent.
2. **Thoroughly describe** on a 3" x 5" card:
 - a. type of fiber
 - b. fiber preparation
 - c. method of dyeing
 - d. method of spinning
 - e. purpose

Class

110. Handspun Yarn, any variety, Youth (13 and under)
120. Handspun Yarn, any variety, Youth (14 over)
130. Handspun Yarn, any variety, Senior (60 and over)
140. Handspun Yarn, any variety, Adult - First hand spun entry in Larimer County Fair.
150. Any Fiber Using Any Kind of Hand Spindle, single or multi-ply, 1 oz.
160. Alpaca, single or multi-ply

170. Angora Rabbit, single or multi-ply
180. Goat (mohair, cashmere, cashgora, pygora), single or multi-ply
190. Llama, single or multi-ply
200. Plant fiber (i.e. cotton, flax, soy silk), single or multi-ply
210. Sheep Wool, medium single
220. Sheep Wool, two or more plies
230. Silk, single or multi-ply, 1 oz.
240. Yarns (animal fiber) not listed (i.e. musk ox, dog, cat), single or multi-ply, 1 oz.
250. Blends of any above fiber, single or multi-ply
260. Novelty Yarn, any above fiber or blend, (i.e. looped, fluffy, thick and thin, knotted, beaded, etc.), single or multi-ply. Binder thread may be non-animal fiber.
270. 3 Skeins – hand spun from the same fiber, each skein 2 oz., 2-ply
280. Any non-woven project using handspun yarn, both completed by the exhibitor. Must include yarn sample.

Hand Weaving

Thoroughly describe on a 3" x 5" card:

1. type of fiber
2. description of project

Class

290. Hand woven clothing, using hand spun yarn as a significant element
300. Hand woven clothing, using commercial yarn
310. Hand woven household article, using hand-spun yarn as a significant element
320. Hand woven household article, using commercial yarn
330. Hand woven article, Individual, 7 years and under
340. Hand woven article, Individual, 8 years to 13 years
350. Hand woven article, Individual, 14 years to 18 years
360. Hand woven article, Individual, 60 and over
370. Miscellaneous: off-loom, 3 dimensional, free-form, or other hand-woven articles
380. Hand woven Yardage (using handspun and/or commercial yarn) designed for clothing or household article, 2 yard minimum. Include your purpose on your 3" x 5" card.
390. Tapestry – wall hanging

Special Awards

A Grand and Reserve Grand Champion and 3 Champion and 3 Reserve Champion ribbons will be awarded for outstanding exhibits.

Outstanding Spinning Exhibit

Lambspun of Colorado, Shirley Ellsworth, Fort Collins

Outstanding Weaving Exhibit

Lambspun of Colorado, Shirley Ellsworth, Fort Collins

Outstanding Hand Woven Exhibit

Northern Colorado Weavers Guild, Fort Collins

Outstanding Hand Spun Exhibit

Northern Colorado Weavers Guild, Fort Collins

Outstanding Spinning Exhibit

Your Daily Fiber, Fort Collins

Outstanding Weaving Exhibit

Your Daily Fiber, Fort Collins

Outstanding Spinning/Weaving Exhibit

Your Daily Fiber, Fort Collins

Outstanding Weaving Exhibit

My Sister Knits, Fort Collins

Outstanding Spinning/Weaving Exhibit

Shuttles, Spindles & Skeins, Boulder

Outstanding Youth Exhibits

Gathright Family, Fort Collins

Department OR Machine Work

Superintendent - Karen Copeland
Extension Contact – Emily Alligood

1. Viewing of judging is open to the public on July 31, at 8:30 a.m.
2. Do not put names on clothing exhibits. Use hangers. Use a skirt hanger for skirts & shorts.
3. No garments are to be removed before check-out time.
4. All garments must be machine made with appropriate hand sewing where necessary.
5. Only one entry will be accepted in each class from each exhibitor.
6. All articles entered in this department must have been finished since August 1, 2018.
7. Children's age determined as of December 31, 2018.

8. ALL EXHIBITORS SHOULD DESCRIBE ON AN INDEX CARD WHY YOU CHOSE THE COLOR COMBINATION AND FABRIC.

9. FOR CLASS #140, #160, #350, #360, #570 AND #580 DESCRIBE HOW ITEM WAS RECYCLED AND FROM WHAT SOURCES ON THE INDEX CARD.

10. See Open Class Home Economics, Fine Arts, Photography, and Creative Crafts General Rules for further information.

Premiums will be:

1st – \$2.00; 2nd – \$1.50; 3rd – \$1.00

Children's Exhibits

(Made by Individual 7 Years and under)

Class

- 110. Clothing Article
- 120. Machine Made Novelty Item (Purse, Animal, Toy, etc.)
- 130. Recycled Garment (garment made from another garment, curtains, drapes, pillow cases, etc.)

Youth Exhibits

(Made by Individual 8 Years to 13 years)

Class

- 140. Clothing Article
- 150. Recycled Garment (garment made out of another garment, curtains, drapes, etc.)
- 160. Machine Made Novelty Item (Purse, Animal, Toy, etc.)

Beginning Sewer Exhibits

(Made by Individual 16 Years and older that has been sewing from 1 to 15 Years)

Small Child Clothing Classes (size 9 or under)

- 170. Blouse or Shirt
- 180. Dress
- 190. Pants, Overalls, Shorts
- 200. Costume for Child or Period Outfit

Youth and Adult Classes (Youth size 10 and above and Adult)

- 210. Blouse or Shirt
- 220. Ensemble (Pants with Blouse or Jacket, Skirt with Blouse or jacket)
- 230. Coat or Jacket or Cape
- 240. Dress or Jumper
- 250. Baptismal Outfit, Wedding Dress, Evening Wear, Formal Wear
- 260. Pants, Shorts, Skirt, Night Wear
- 270. Pieced or Quilted Jacket or Vest
- 280. Any Other Vest
- 290. Costume or Period Outfit for Adult
- 300. Recycled Garment (Clothing)
- 310. Recycled Garment (Animal, Toy, Purse, etc.)
- 320. Any Other Garment not listed
- 330. Accessories (Tie, Belt Scarf, Bag, hats, Apron, Bib, etc.)
- 340. Home Décor Item

Experienced Sewer Exhibits

(Made by Individual that has been sewing for more than 16 Years)

Small Child Clothing Classes (Size 9 or under)

- 350. Blouse or Shirt
- 360. Dress
- 370. Pants, Overalls, Shorts
- 380. Costume for Child or Period Outfit

Youth and Adult Classes (Youth Size 10 and above and Adult)

- 390. Blouse or Shirt
- 400. Ensemble (Pants with Blouse or Jacket, Skirt with Blouse or jacket)
- 410. Coat or Jacket or Cape
- 420. Dress or Jumper
- 430. Baptismal Outfit, Wedding Dress, Evening Wear, Formal Wear
- 440. Pants, Shorts, Skirt
- 450. Night Wear, Sleep Wear, Loungewear
- 460. Pieced or Quilted Jacket or Vest
- 470. Any Other Vest
- 480. Costume or Period Outfit for Adult
- 490. Recycled Garment (Clothing)
- 500. Recycled Garment (Animal, Toy, Purse, etc.)
- 510. Any Other Garment, not listed
- 520. Accessories (Tie, Belt Scarf, Bag, Hats, Apron, Bib, etc.)
- 530. Home Décor Item

Novelty Exhibits

Class

- 540. Machine Made Stuffed Animal, Bear, Toy
- 550. Machine Made, Any Other Novelty Item
- 560. Doll Clothes (3 outfits) displayed on board or Doll Outfit exhibited on a Doll (Doll not judged)

Special Awards

A Grand and Reserve Grand Champion and seven Champion and seven Reserve Champion ribbons will be awarded for outstanding exhibits in this department.

Outstanding Adult Machine Work Exhibit

Fort Collins Chapter of the American Sewing Guild, Sandra Haddorff, President, Fort Collins

Outstanding Machine Made Exhibit

The Sewing Circle, Fort Collins

Outstanding Machine Made Exhibit

The Sewing Circle, Fort Collins

Outstanding Machine Made Exhibit

The Sewing Circle, Fort Collins

Outstanding Machine Made Exhibit

The Sewing Circle, Fort Collins

Outstanding Machine Made Exhibits

Karen Copeland, Johnstown

Department OS

Open Class Fine Arts

Superintendent – Pat Moore
Extension Contact – Emily Alligood

Premiums will be:
1st – \$2.00; 2nd – \$1.50; 3rd – \$1.00

1. Prior pre-registration is required. Pre-Registration Forms are due in the Larimer County Fair Office, 5280 Arena Circle, Loveland, CO 80538, on or before July 15. **Late Pre-Registration Forms** – Pre-Registration Forms received after July 15 are subject to a late entry fee of \$5.00/department, subject to space availability. Entry office closes at 6 p.m. on July 15. Postmarks, faxes or internet pre-registration will be accepted only if posted on or before July 15.

2. Exhibits will be accepted from 5:00 p.m. to 8:00 p.m. on Tuesday, July 30. Judging will begin at 10:00 a.m. on Wednesday, July 31. Entries will be released from **5:00 – 7:00 p.m.** on Wednesday, August 7.

3. Each exhibitor may show a **maximum** of three entries in the department and can enter up to three entries in one class.

4. See Open Class Home Economics, Fine Arts, Photography, and Creative Crafts General Rules for additional information.

5. Classes may be combined or divided at the discretion of the superintendents and/or judge. **If there are 3 or more of any media in a class that are of a similar topic, a new class may be made.**

6. All pictures must be framed except those exhibited by Children 7 and under and Oils and Acrylics that are on gallery wrapped canvas. Inexpensive frames are fine. Do not tape mat to art. Framed work must have screw eyes and wire.

7. Artwork will be rejected if not properly prepared for hanging. Matted work must have a wire hanger sturdy enough to hold work. No glue back hangers, unless they have been reinforced (do not use masking tape). This rule is for your protection as well as the viewers.

8. Children ages are determined as of December 31, 2018. Participants in the Children's Division will each receive a participation ribbon.

9. To qualify for the Advanced Category, the artist must have previously won an award or successfully entered any juried show. If the judge or superintendent merits your work as advanced, even if you have not won a previous award or entered a juried show, your work will be put into the advanced category.

10. The judging of the Fine Arts will be based on the following:
– Originality of idea (Absolutely no copying of any other painting.)
– Manner in which medium is used.
– Proper presentation of entry. (How artwork is framed, matted or mounted.)
– Entry should be example of your best work. The work should not have been shown in past County Fairs.

11. Superintendent has the right to reject oversize pictures and subject matter of a sensitive nature.

12. **Payment for Premiums:** Exhibitors may collect payment for premiums and special cash awards. See Open Class Division General Rules and Regulations for schedule. Premiums and special awards not collected before noon Friday, August 9 will be forfeited. **No Exceptions.**

Children–7 years and under

(List birth date of child on back of picture)

Class

- 110. Drawing, Any Media
- 120. Painting, Any Media
- 130. Collage (including seed or bean picture)

Youth–8 years through 13

(List birth date of child on back of picture)

Class

- 140. Drawing, Any Media
- 150. Painting, Any Media
- 160. Collage (including seed or bean picture)

Teenage–14 years through 18

(List birth date of child on back of picture)

Class

- 170. Drawing, Any Media
- 180. Painting, Any Media
- 190. Collage or Mixed Media
- 200. Sculpture

Amateur–19 years and over

Class

- 210. Composition in Oil/Acrylic
- 220. Composition in Water Color
- 230. Composition in Pastel
- 240. Composition in Graphite Pencil, Charcoal or Colored Pencil
- 250. Composition in Mixed Media, Collage or anything not included in above categories
- 260. Sculpture
- 270. China Painting

Advanced–20 years and over

(See Rule #9 under Open Class Fine Arts General Rules)

Class

- 280. Composition in Oil/Acrylic
- 290. Composition in Water Color
- 300. Composition in Pastel
- 310. Composition in Graphite Pencil, Charcoal or Colored Pencil
- 320. Composition in Mixed Media, Collage or anything not included in above categories
- 330. Sculpture
- 340. China Painting

Senior Amateur 60 years & older

Class

- 350. Drawing, Any Media
- 360. Painting, Any Media
- 370. Collage or Mixed Media
- 380. Sculpture
- 390. China Painting

Special Awards

A Grand and Reserve Grand Champion of the Show will be selected and a Champion and Reserve Champion ribbon will be presented in each age division.

Grand Champion - Fine Arts Department

Reserve Grand Champion - Fine Arts Department

Champion Amateur Exhibit,

Heritage Frames & Fine Art, Marty Vermilyea, Fort Collins

Reserve Champion Amateur Exhibit

Heritage Frames & Fine Art, Marty Vermilyea, Fort Collins

Champion Advanced Exhibit

Heritage Frames & Fine Art, Marty Vermilyea, Fort Collins

Reserve Champion Advanced Exhibit

Heritage Frames & Fine Art, Marty Vermilyea, Fort Collins

Champion Senior Citizen Exhibit

Heritage Frames & Fine Art, Marty Vermilyea, Fort Collins

Reserve Champion Senior Citizen Exhibit

Heritage Frames & Fine Art, Marty Vermilyea, Fort Collins

Champion Children's Exhibit

Jolene Lindsey, Loveland

Reserve Champion Children's Exhibit

Jolene Lindsey, Loveland

Champion Youth Exhibit

Jolene Lindsey, Loveland

Reserve Champion Youth Exhibit

Jolene Lindsey, Loveland

Champion Teenage Exhibit

Jolene Lindsey, Loveland

Reserve Champion Teenage Exhibit

Jolene Lindsey, Loveland

Department OT
Open Class
Photography

Superintendent - Anne Peterson
Extension Contact – Emily Allgood

Please Read All of the Instructions
Before Entering, Especially if you are Entering
any Digital Enhanced Class.

1. Prior pre-registration is required. Pre-Registration Forms are due in the Larimer County Fair Office, 5280 Arena Circle, Loveland, CO 80538, on or before July 15. **Late Pre-Registration Forms** – Pre-Registration Forms received after July 15 are subject to a late entry fee of \$5.00/department, subject to space availability. Entry office closes at 6 p.m. on July 15. Postmarks, faxes or internet pre-registration will be accepted only if posted on or before July 15.

2. Exhibits will be checked in from 5:00 p.m. to 8:00 p.m. on Tuesday, July 30. Judging will begin at 5:00 p.m. on Thursday, August 1. Exhibitors and spectators are invited to view judging and hear comments of the judge. Entries will be released **from 5:00 p.m. – 7:00 p.m.** on August 7.

3. Each exhibitor may show a **maximum of three** photographs in the department and can enter up to three entries in one class.

4. No collages of photos accepted.

5. Judge will consider entries on a basis of: (1) picture content and appropriateness of class designation; (2) composition; (3) image, quality, tone, color and texture. Superintendents and/or judges have the right to reclassify any photograph into a correct class. Classes may be combined or divided at the discretion of the superintendents and/or judge.

6. Prints must be at least 5" x 7" and no larger than **12" x 18"**. This is the photograph size, not the mount or mat.

7. **Photography must not be framed, but must be matted or dry mounted. Photographs must not be shrink wrapped.**

Note: Hangers will be provided. Do not put them on your photographs.

8. Divisions for exhibitors to enter shall be the following:

Children - 7 years and under (as of December 31, 2018)

Youth - 8 years through 13 years (as of December 31, 2018)

Teens - 14 years through 18 years (as of December 31, 2018)

Amateur - Adults - 19 and over, by December 31, 2018, who have not previously won a Grand Champion in this division (Amateur Photography) at the Larimer County Fair or have little or no formal training in photography.

Advanced Amateur - Adults who have previously won Grand Champion in the Amateur Division of Photography at the Larimer County Fair **or** have had **under** three years of formal photography training **or** for whom "does not constitute a primary source of income."

Note: This class will accommodate most photographers who have previously shown in the "Professional" division which has been discontinued from this show. This show is intended to be an Amateur Show. We realize that Advanced Amateur Photographers often sell work or shoot weddings, etc., but rarely does this cover the expense of their hobby. Commercial booths are available for the professional who would like to show or sell their work at the Fair.

Senior Adult - 55 years and older

9. Do not write on photograph or mat. Photos with date and time stamp will not be placed.

10. An exhibitor may enter only one division. (i.e., Senior Citizen, Amateur, etc.)

11. A Champion and Reserve Champion ribbon will be awarded in each division. The Champions from each division will compete for Best of Show.

12. See Open Home Economics, Fine Arts, Photography, and Creative Crafts General Rules for additional information.

13. Superintendent has the right to reject subject matter of a sensitive nature. No photography of nude or seminude subjects will be accepted.

14. Definition of classifications is as follows:

Scenic – Landscape or view (people, if present, must be part of the scene and not the subject of the photography).

Nature –

- A. Animals-Wildlife in its natural habitat (No people and nothing man-made in the photograph)
- B. Animals-Domestic (pets, zoo animals, etc.)
- C. Plants, Flowers, Insects

People – Portrait or people included in the photograph as an integral part of the subject matter.

Sports Action – Any image depicting a sport

Humor – Any Subject

Other – Still life, contemporary, geology, anthropology, archeology, astronomy, architecture and other photographs not included in specific classes.

Digital Enhanced Photograph – Images modified and altered dramatically through the use of computer programs. (Sharpening, contrast, and color correction are standard digital process. Anything beyond that fits in this category.) Entries placed in this class at discretion of superintendents.

You must enter the Digital Enhanced Class if you make any addition of any new color, or any subtraction of any existing color from your photograph.

Please include a note on the back of your entry describing how your photograph was digitally enhanced.

15. **Payment for Premiums:** Exhibitors may collect payment for premiums and special cash awards won. See Open Class Division General Rules and Regulations for schedule. Premiums and special awards not collected before noon Friday, August 9 will be forfeited.
No Exceptions.

Premiums will be:

1st – \$2.00; 2nd – \$1.50; 3rd – \$1.00

Children - 7 years & under

Class

110. Black & White or Color Photo

Youth - 8 years through 13 years

Class

- 210.** Scenic, Color Photo
- 220.** Nature: Animals, Wildlife, Color Photo
- 230.** Nature: Animals, Domestic, Color Photo
- 240.** Nature: Plants, Flowers & Insects, Color Photo
- 250.** People, Color Photo
- 260.** Sports Action
- 270.** Humor, Color Photo
- 280.** Other, Color Photo
- 290.** Any Subject, Black & White Photo (NO SEPIA)
- 300.** Digital Enhanced Photo (see instructions above)

Teens - 14 years to 18 years

Class

- 310.** Scenic, Color Photo
- 320.** Nature: Animals, Wildlife, Color Photo
- 330.** Nature: Animals, Domestic, Color Photo
- 340.** Nature: Plants, Flowers & Insects, Color Photo
- 350.** People, Color Photo
- 360.** Sports Action
- 370.** Humor, Color Photo
- 380.** Other, Color Photo
- 390.** Any Subject, Black & White Photo (NO SEPIA)
- 400.** Digital Enhanced Photo (see instructions above)

Amateur

Class

- 410.** Scenic, Color Photo
- 420.** Nature: Animals, Wildlife, Color Photo
- 430.** Nature: Animals, Domestic, Color Photo
- 440.** Nature: Plants, Flowers & Insects, Color Photo
- 450.** People, Color Photo
- 460.** Sports Action
- 470.** Humor, Color Photo
- 480.** Other, Color Photo
- 490.** Any Subject, Black & White Photo (NO SEPIA)
- 500.** Digital Enhanced Photo (see instructions above)

Advanced Amateur

Class

- 510.** Scenic, Color Photo
- 520.** Nature: Animals, Wildlife, Color Photo
- 530.** Nature: Animals, Domestic, Color Photo
- 540.** Nature: Plants, Flowers & Insects, Color Photo
- 550.** People, Color Photo
- 560.** Sports Action
- 570.** Humor, Color Photo
- 580.** Other, Color Photo
- 590.** Any Subject, Black & White Photo (NO SEPIA)
- 600.** Digital Enhanced Photo (see instructions above)

Senior Adult

Class

- 610.** Scenic, Color Photo
- 620.** Nature: Animals, Wildlife, Color Photo
- 630.** Nature: Animals, Domestic, Color Photo
- 640.** Nature: Plants, Flowers & Insects, Color Photo
- 650.** People, Color Photo
- 660.** Sports Action
- 670.** Humor, Color Photo
- 680.** Other, Color Photo
- 690.** Any Subject, Black & White Photo (NO SEPIA)
- 700.** Digital Enhanced Photo (see instructions above)

Special Awards

A Grand and Reserve Grand Champion will be selected and six Champion and six Reserve Champion ribbons will be awarded for outstanding exhibits in each division of Photography.

Best of Show - Open Photography

Lefthand Printworks, Tim Hardy, Berthoud

Reserve Best of Show - Open Photography

Lefthand Printworks, Tim Hardy, Berthoud

Champion Senior Exhibit - Open Photography

Stonewall Creek Ranch, Larry & Anne Peterson, Livermore

Reserve Champion Senior Exhibit – Open Photography

Wayne & Janice Gibb, Berthoud

Champion Children’s Exhibit - Open Photography

Rodeo News, Siri Stevens, LaPorte

Champion Youth Exhibit - Open Photography

Whispering Pines Lodge, LLC, Corry McDowell, Loveland

Champion Teen Photography Exhibit

Lefthand Printworks, Tim Hardy, Berthoud

Champion Amateur Exhibit - Open Photography

Stonewall Excavating, Larry & Anne Peterson, Livermore

Champion Advanced Amateur Exhibit – Open Photography

Lefthand Printworks, Tim Hardy, Berthoud

People’s Choice Award – Open Photography

Whispering Pines Lodge, LLC, Corry McDowell, Loveland &

Stonewall Creek Ranch, Larry & Anne Peterson, Livermore

Department OU

Open Class Creative Crafts

Superintendent - Jann Theilgaard
Extension Contact – Emily Alligood

1. Prior pre-registration is required. Pre-Registration Forms are due in the Larimer County Fair Office, 5280 Arena Circle, Loveland CO 80538, on or before July 15. **Late Pre-Registration Forms** – Pre-Registration Forms received after July 15 are subject to a late entry fee of \$5.00/department, subject to space availability. Entry office closes at 6 p.m. on July 15. Postmarks, faxes or internet pre-registration will be accepted only if posted on or before July 15.

2. All exhibits must have been completed since August 1, 2018.

3. All items will be judged on workmanship, beauty of design, general appearance, creativity, and how will it be used.

4. **A written explanation on a 3” x 5” card must be attached to the exhibit. Explain what part is created/completed by the exhibitor. List any unique skills used.**

5. **An exhibitor may enter only one item in each class.**

6. Classes may be combined and/or divided at the discretion of the superintendent and judge.

7. **Classes 110 - 300 should be made by a child with minimum supervision by an adult. Please indicate age of children on entry tag.**

8. **Judging will begin at 8:30 a.m. on Wednesday, July 31.**

9. See Open Home Economics, Fine Arts, Photography and Creative Crafts General Rules for additional information.

10. **The use of marijuana or CBD in any display, food item, or exhibit is prohibited and shall be rejected. The exhibitor shall be referred to law enforcement.**

11. Items meant to be hung will be hung, unless otherwise requested by exhibitor.

12. If a class exists anywhere in the **OTHER** Open Class departments for an exhibit, it may not be shown in the Open Class Creative Crafts class #530.

13. If your exhibit is overly large (i.e. wagon, saddle, doll house, furniture or other large object) please include dimensions and alert staff on entry form when entering so ample space can be planned for display.

14. **Payment for Premiums:** Exhibitors may collect payment for premiums and special cash awards won. See Open Class Division General Rules and Regulations for schedule. Premiums and special awards not collected before noon Friday, August 9 will be forfeited. **No Exceptions.**

Premiums will be:

1st – \$2.00; 2nd – \$1.50; 3rd – \$1.00

Children - 7 years and under

(Age as of December 31, 2018)

Class

Include age on 3” x 5” card, (Rule #4)

110. Children, 4 and under, any craft

120. Children 5 & 6 years of age, any craft

130. Handcrafted item of metal, leather, wood, candles, clay

140. Item of paper or stone or any other medium not listed in class #130

150. Jewelry, all materials

160. **Pottery/Ceramics, purchased mold and or/painted**

170. **Pottery/Ceramics, handmade design and /or painted**

180. Original creation made with Legos, **MUST BE MOUNTED TO A SOLID BASE**

190. **Any item made from a kit**

200. **Plastic crafts of all kinds**

210. Doll, any medium

Youth - 8 years through 13

(Age as of December 31, 2018)

Class

Include age on 3” x 5” card, (Rule #4)

220. Handcrafted item of metal, leather, wood, candles, clay

230. Item of paper, stone or any other item not listed in class #220

240. Jewelry, all materials

250. **Pottery/Ceramics, purchased mold and/or painted**

260. **Pottery/Ceramics, handmade design and /or painted**

270. Original creation made with Legos, **MUST BE MOUNTED TO A SOLID BASE**

280. **Any item made from a kit**

290. **Plastic crafts of all kinds**

300. Doll, any medium

Teens - 14 years through 18

(Age as of December 31, 2018)

Class

Include age on 3” x 5” card, (Rule #4)

310. Handcrafted item of metal, leather, wood, candles, clay

320. Item of paper, stone or any other item not listed in class #310

330. Jewelry, all materials

340. **Pottery/Ceramics, purchased mold and/or painted**

350. **Pottery/Ceramics, handmade design and /or painted**

360. Original creation made with Legos, **MUST BE MOUNTED TO A SOLID BASE**

370. **Any item made from a kit**

380. **Plastic crafts of all kinds**

390. Doll, any medium

Miscellaneous

Class

400. **Ceramics, fired, glazed, stained, chalks, all included**

410. **Pottery, Wheel Thrown**

420. **Pottery, Sculpted Freehand**

430. Item made from recycled materials (enter recycled garment or sewn item in Machine Work Department)

440. **Dolls, all mediums and designs**

450. **Painting on any type of material – cloth, wood, etc.**

460. **Adult Coloring, must be matted or framed for hanging**

470. **Stenciling**

480. **Ethnic Craft, any item**

490. **Memory Books / Scrapbooking, a single page entry**

500. **Any Holiday Craft**

- 510. Plastic Crafts
- 520. Rubber stamping
- 530. Any craft/material **NOT** listed in any other class
- 540. Silk Flower Arrangements
- 550. Dried Arrangement
- 560. Wreaths, **all designs and shapes**
- 570. Basket, handmade, **any material**
- 580. Jewelry, **hand crafted original designs**
- 590. Jewelry, **beads, wire, any other material designs**
- 600. Crocheted Crafts of **any kind**
- 610. Beadwork, **all designs and items**
- 620. **Leathercraft, all styles and designs**
- 630. Stained Glass, amateur
- 640. Stained Glass, advanced
- 650. **Lathe turned pen/pencils with all types of material, (ie. wood, acrylic, etc.)**
- 660. **Item made with natural stones, painted or with other added materials.**
- 670. **Woodcarving, people, including caricatures**
- 680. **Woodcarving, critters**
- 690. **Carving, all other materials and designs, bark, gourds, ornaments, ie. pinewood derby car**
- 700. Functional item made with any material, furniture, home décor
- 710. Restoration
- 720. Any item made from a kit
- 730. Any craft item made by individual 60 to 70
- 740. Any craft item made by individual over 71

Special Awards

A Grand and Reserve Grand Champion Exhibit will be selected and six Champion and Reserve Champion ribbons will be awarded for outstanding exhibits.

Judge's Choice – Exceptional Merit – Creative Crafts

J. T's Woodworks, Jann Theilgaard, Loveland

Most Creative Use of Materials – Creative Crafts – Children 7 & Under

J. T's Woodworks, Jann Theilgaard, Loveland

Most Creative Use of Materials – Creative Crafts – Youth 8 to 13

J. T's Woodworks, Jann Theilgaard, Loveland

Most Creative Use of Materials – Creative Crafts – Teens 14 to 18

J. T's Woodworks, Jann Theilgaard, Loveland

Outstanding Creativity, Miscellaneous Classes

Tigges Farm, Kathy Rickart, Greeley

Outstanding Woodcarving Exhibits – 3 Awards

Northern Colorado Woodcarvers, Paul Price

SUBMIT FORM:

<p>OPEN CLASS PRE-REGISTRATION FORM Entries Close July 15, 2019</p>	<p>Mail to: Larimer County Fair 5280 Arena Circle, Suite 101 Loveland, CO 80538 <u>**By July 15**</u></p>	<p>Bring to: Fair Extension Office McKee 4-H Building (970) 619-4080 FAX (970) 619-4085 <u>**July 10 – 15**</u></p>	<p>Office Use ONLY Exhibitor Number: _____ Late Fees: \$ _____</p>
--	--	---	---

Pre-registration Required. Your pre-registration must be in the Larimer County Fair Office, 5280 Arena Circle, Ste 101, Loveland, CO 80538, on or before **July 15, 2019**. Additional forms are available at the same address, from the Extension Office, or at our web site:

<https://larimer.extension.colostate.edu/larimer-county-fair/>

Exhibitor Name: _____

Address: _____

City / Zip: _____

Phone: _____

E-mail address: _____

Check the department(s) in which you plan to bring item(s) to enter in the Larimer County Fair.

- _____ OG - Horticulture
- _____ OJ - Garden Flowers
- _____ OK - Baked Products
- _____ OL - Canned / Dried Products
- _____ OM - Needlework
- _____ ON - Quilting
- _____ OP - Spinning & Weaving
- _____ OR - Machine Work
- _____ OS - Fine Arts
- _____ OT - Photography
- _____ OU - Creative Crafts

Pre-registration is required in all departments. All pre-registration forms shall be in the Larimer County Fair Entry Office or postmarked by **July 15**. Entry Office closes at 6:00 p.m. on **July 15**. Postmarks, faxes and internet pre-registrations will be accepted only if posted on or before **July 15**.

Pre-registration forms received after **July 15** are subject to a late charge of \$5.00 per department and space availability. No late entries will be taken after department check-in.

* See Open Exhibitor Division Rules and Regulations in the 2019 Larimer County Fair Premium Book for further information.